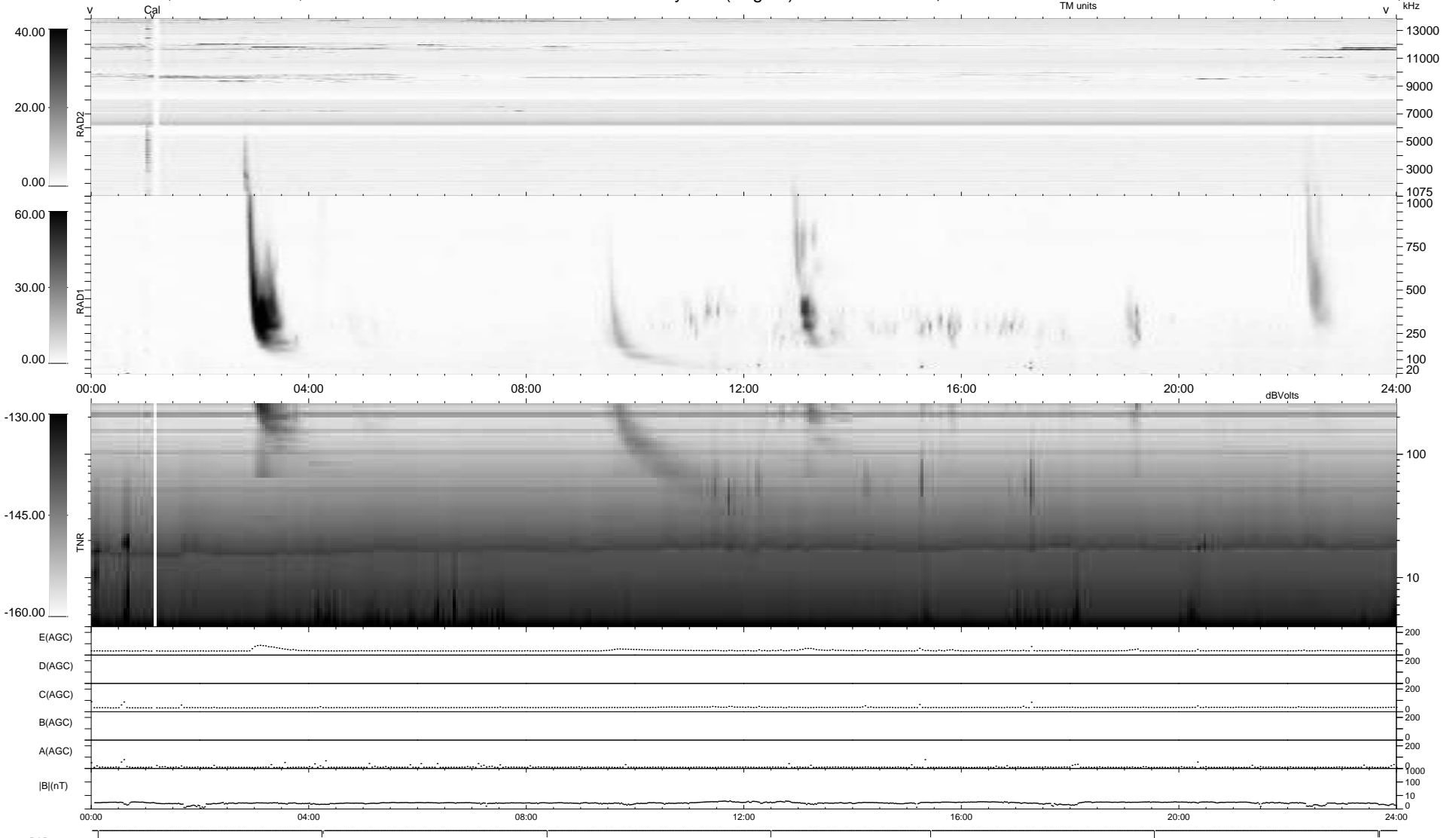


9 bad + 930 good MF/939MF projected (99%) - 0 missing MFs
 Avg interval = 180 secs
 Re = 251.35 (231.95, -96.30, 10.06 GSE)

windlib 2.0b LZ version = v01
 DAILY 2017-10-18 22:52:08
 Re = 250.54 (230.72, -97.19, 9.82 GSE)

WIND/WAVES Summary Plot (Page 1) for 17-OCT-2017, DOY = 290



RAD2 Antenna Ey
 Mode LIN(1)
 SUM/SEP SEP
 Toggle OFF
 RAD1 Antenna Ex
 Mode LIS(2,4)
 SUM/SEP SUM
 Toggle OFF
 TNR Antenna ExEy
 Mode A-32
 Sweep ACE