

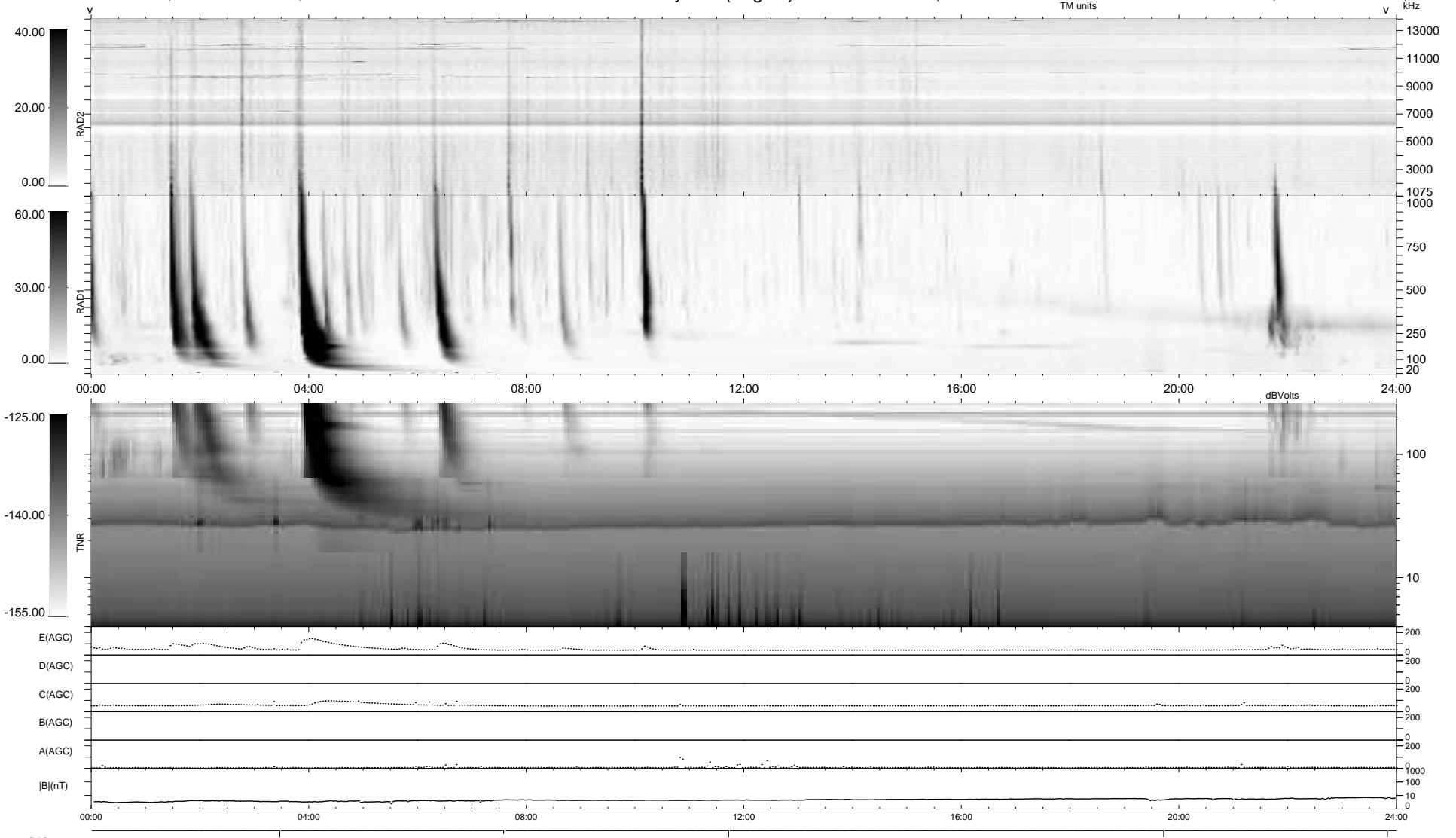
6 bad + 933 good MF/939MF projected (99%) - 0 missing MFs
Avg interval = 180 secs
Re = 257.73 (247.02, -72.50, 12.23 GSE)

windlib 2.0b

LZ version = v01

WIND/WAVES Summary Plot (Page 1) for 04-OCT-2017, DOY = 277

DAILY 2017-10-10 11:53:08
Re = 257.32 (245.85, -75.01, 12.12 GSE)



RAD2
Antenna Ey
Mode LIN(1)
SUM/SEP SEP
Toggle OFF
RAD1
Antenna Ex
Mode LIS(2,4)
SUM/SEP SUM
Toggle OFF
TNR
Antenna ExEy
Mode A-32
Sweep ACE