

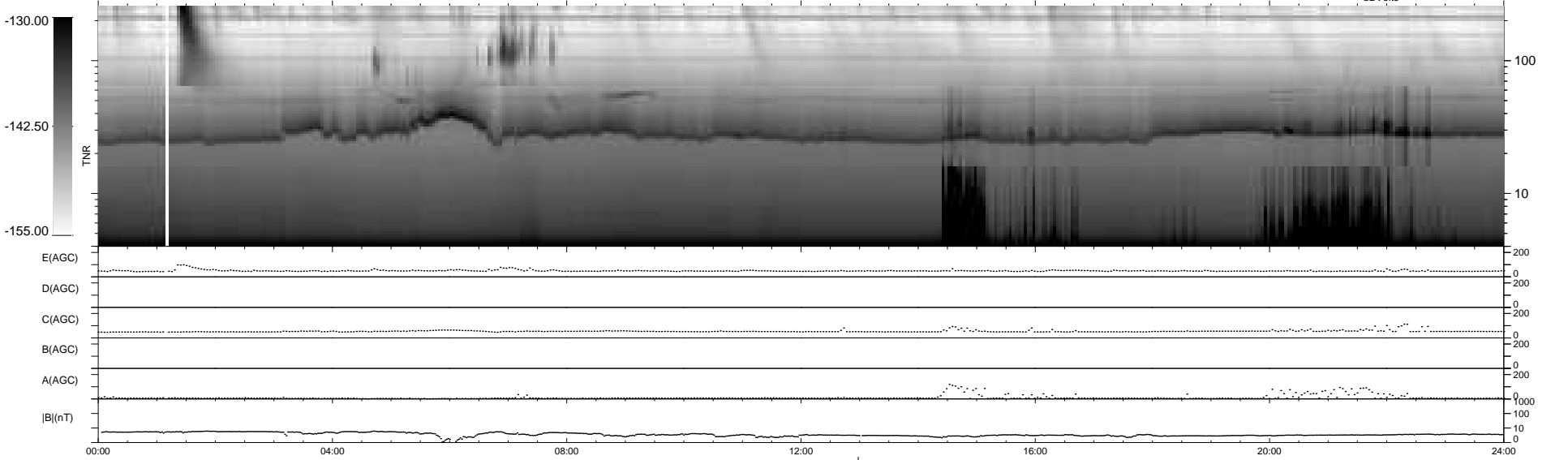
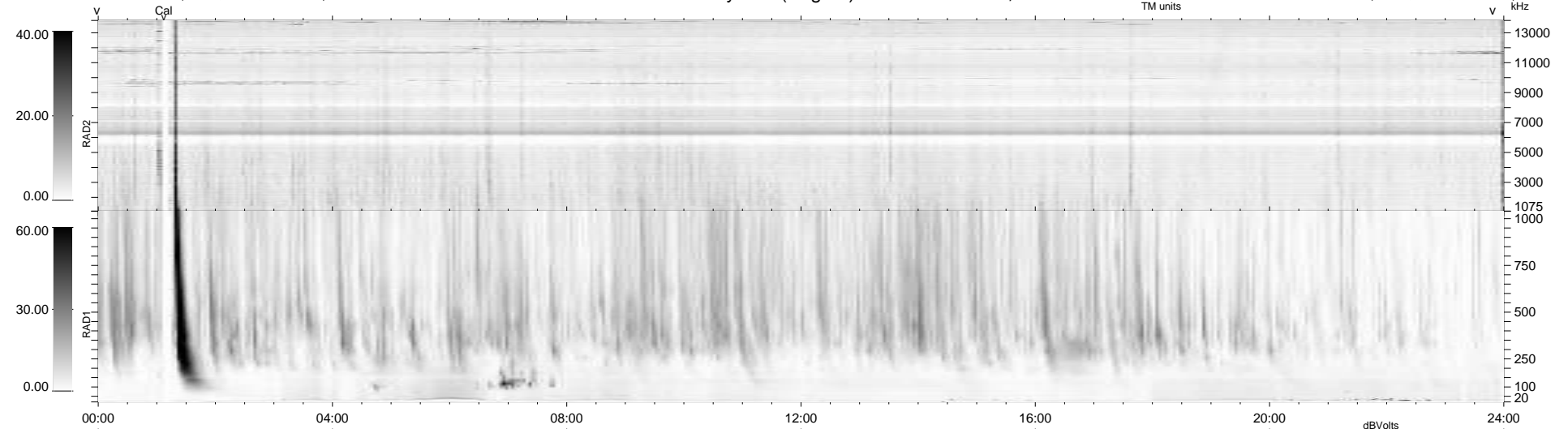
5 bad + 933 good MF/939MF projected (99%) - 1 missing MF  
 Avg interval = 180 secs  
 Re = 258.16 (248.20, -69.91, 12.34 GSE)

windlib 2.0b

LZ version = v01

### WIND/WAVES Summary Plot (Page 1) for 03-OCT-2017, DOY = 276

DAILY 2017-10-10 11:52:10  
 Re = 257.73 (247.03, -72.48, 12.23 GSE)



```

RAD2
Antenna Ey .....
Mode LIN(1) .....
SUM/SEP SEP .....
Toggle OFF .....

RAD1
Antenna Ex .....
Mode LIS(2,4) .....
SUM/SEP SUM .....
Toggle OFF .....

TNR
Antenna ExEy .....
Mode A-32 .....
Sweep ACE .....
  
```