

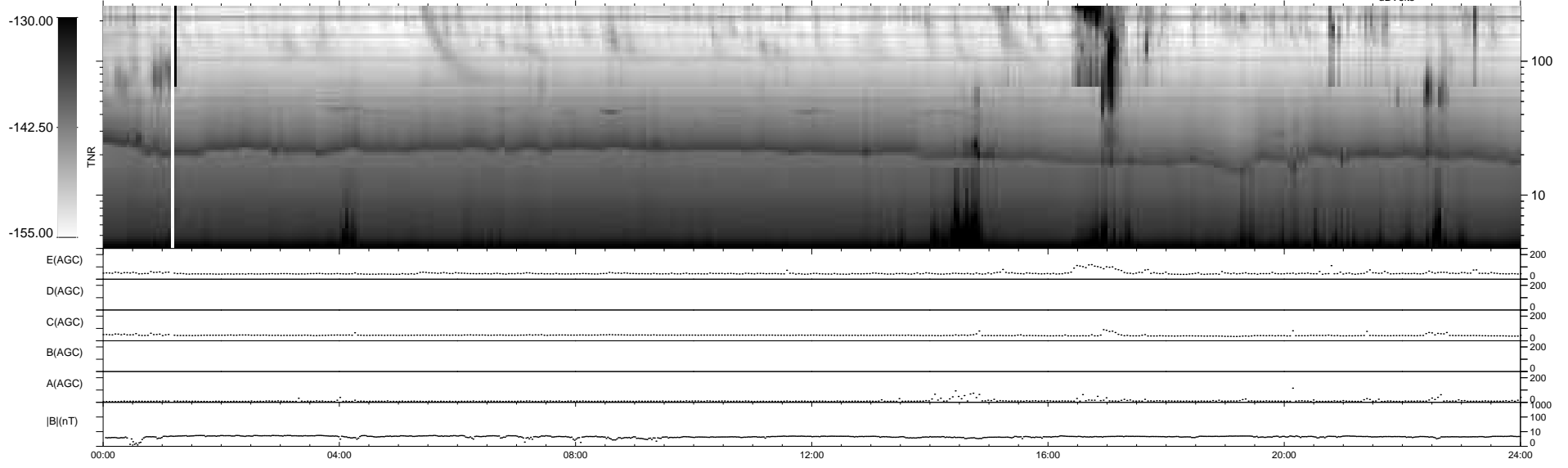
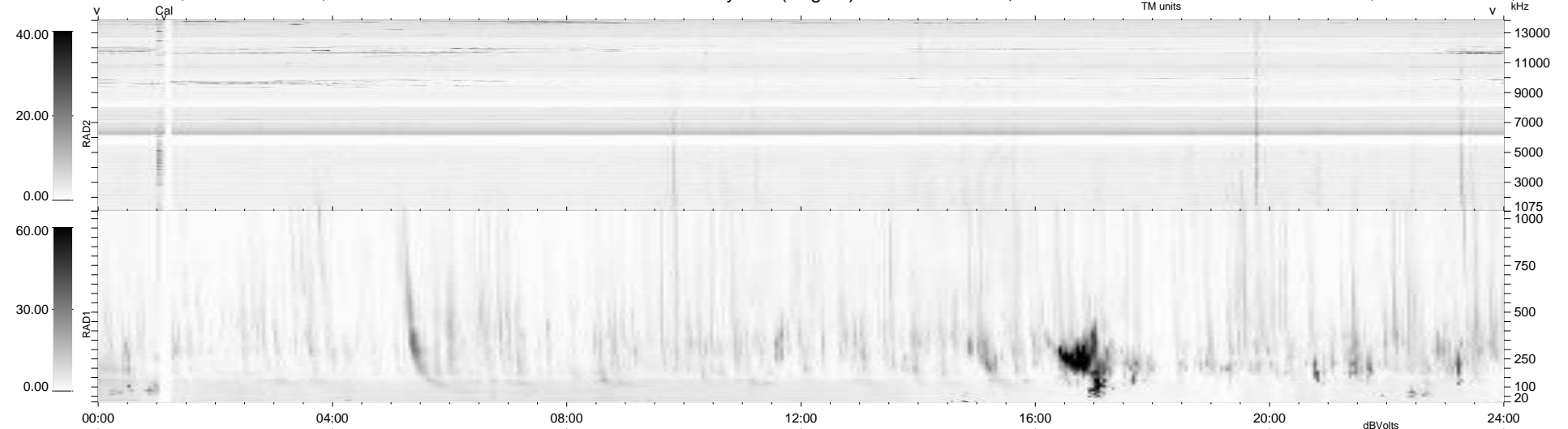
5 bad + 935 good MF/940MF projected (99%) - 0 missing MFs
 Avg interval = 180 secs
 Re = 259.04 (250.55, -64.54, 12.51 GSE)

windlib 2.0b

LZ version = v01

WIND/WAVES Summary Plot (Page 1) for 01-OCT-2017, DOY = 274

DAILY 2017-10-05 13:38:36
 Re = 258.60 (249.39, -67.23, 12.43 GSE)



```

RAD2
Antenna Ey .....
Mode LIN(1) .....
SUM/SEP SEP .....
Toggle OFF .....

RAD1
Antenna Ex .....
Mode LIS(2,4) .....
SUM/SEP SUM .....
Toggle OFF .....

TNR
Antenna ExEy .....
Mode A-32 .....
Sweep ACE .....
  
```