

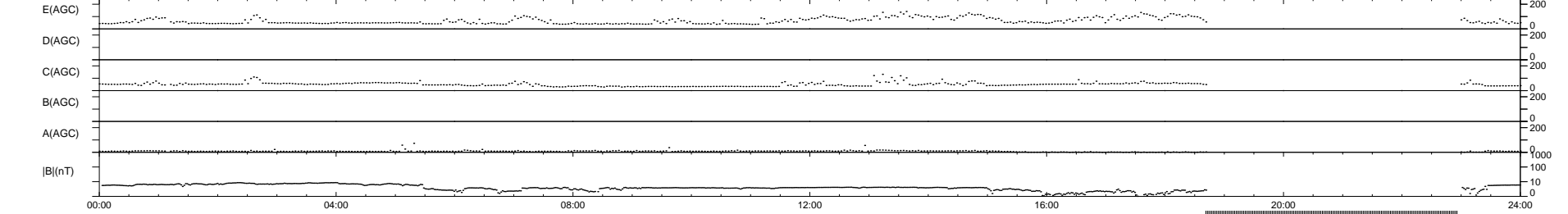
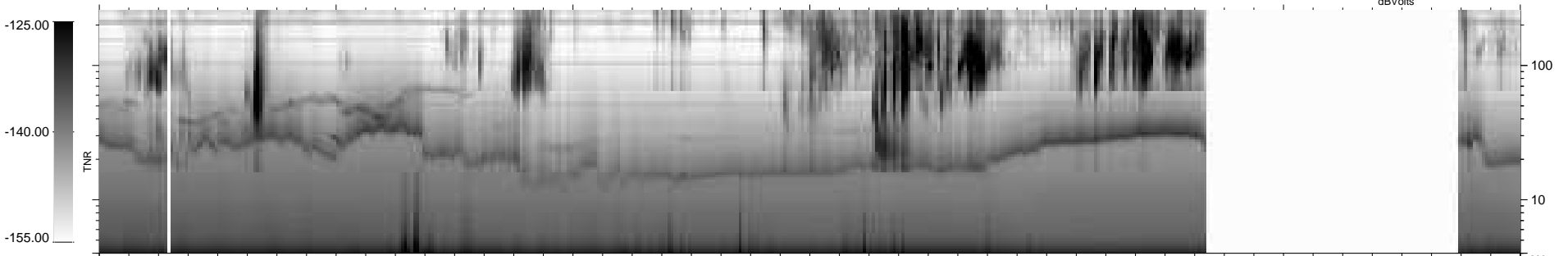
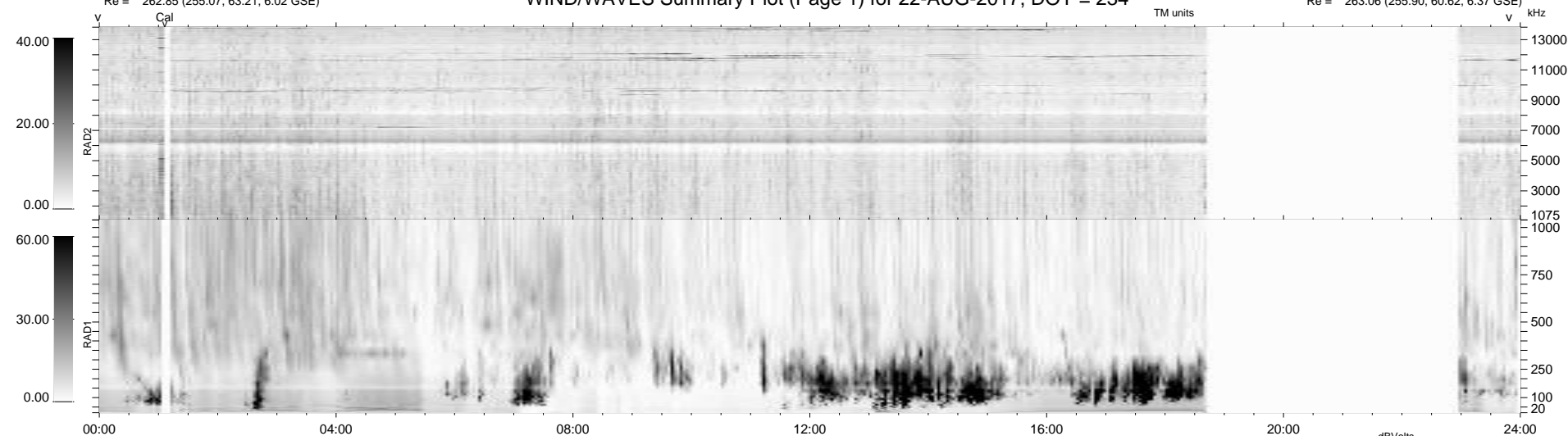
4 bad + 768 good MF/939MF projected (81%) - 167 missing MFs
 Avg interval = 180 secs
 Re = - 262.85 (255.07, 63.21, 6.02 GSE)

windlib 2.0b

LZ version =

WIND/WAVES Summary Plot (Page 1) for 22-AUG-2017, DOY = 234

DAILY 2017-08-24 20:02:14
 Re = 263.06 (255.90, 60.62, 6.37 GSE)



```

RAD2
Antenna Ey .....
Mode LIN(1) .....
SUM/SEP SEP .....
Toggle OFF .....

RAD1
Antenna Ex .....
Mode LIS(2,4) .....
SUM/SEP SUM .....
Toggle OFF .....

TNR
Antenna ExEy .....
Mode A-32 .....
Sweep ACE .....
  
```