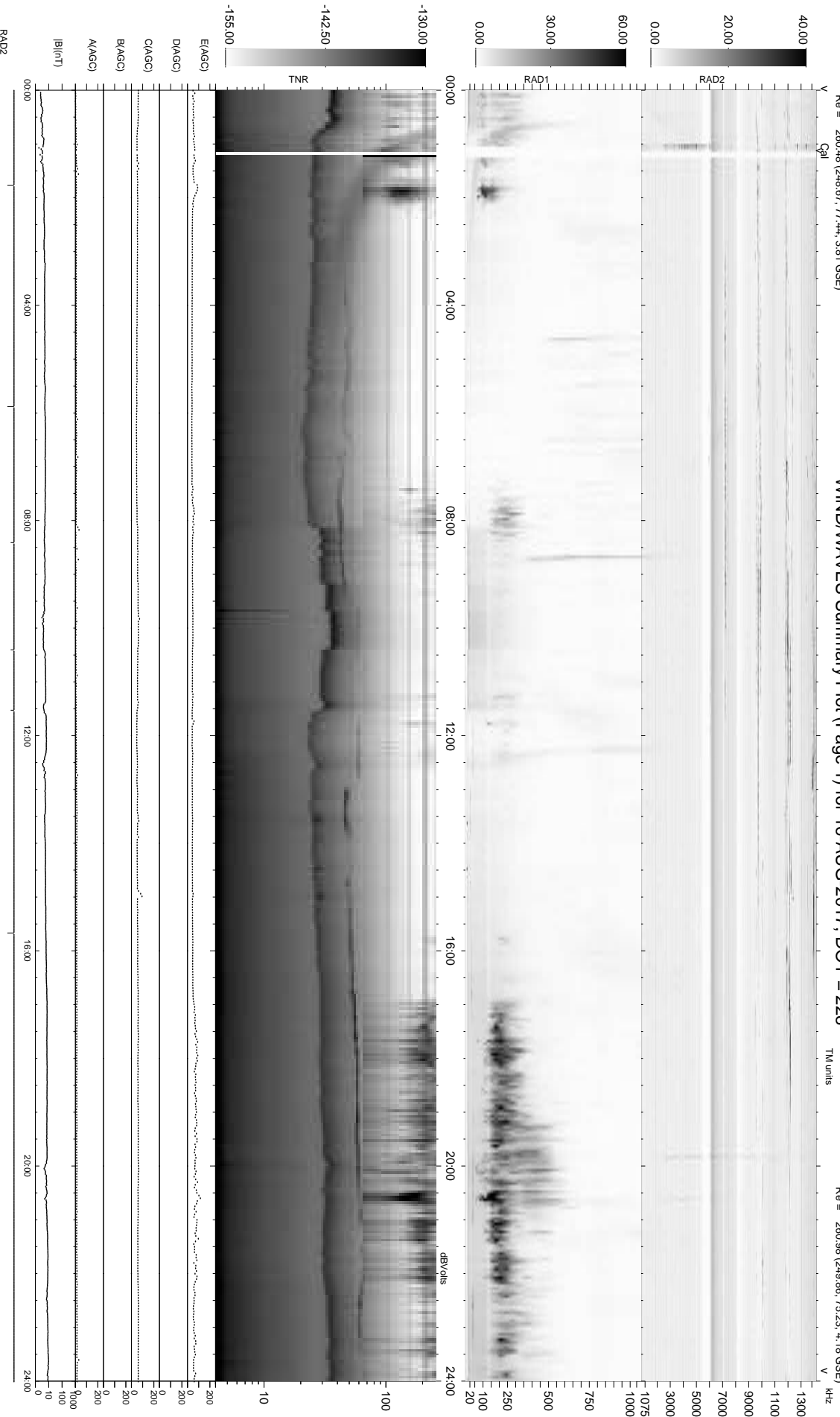


6 bad + 934 good MF (940MF projected (99%)) - 0 missing MFs  
 Avg interval = 180 secs  
 Re = 260.48 (248.67, 77.44, 3.81 GSE)

# WIND/WAVES Summary Plot (Page 1) for 16-AUG-2017, DOY = 228

windlib 2.0b  
 DAILY 2017-10-05 12:47:22  
 Re = 280.98 (249.86, 75.23, 4.18 GSE)  
 LZ version = V01



RAD2  
 Mode IN(I)  
 SUMSEP SEP  
 Toggle OFF  
 RAD1  
 Mode IN(I)  
 SUMSEP SEP  
 Toggle OFF  
 TNR  
 Mode AS2  
 ACE