

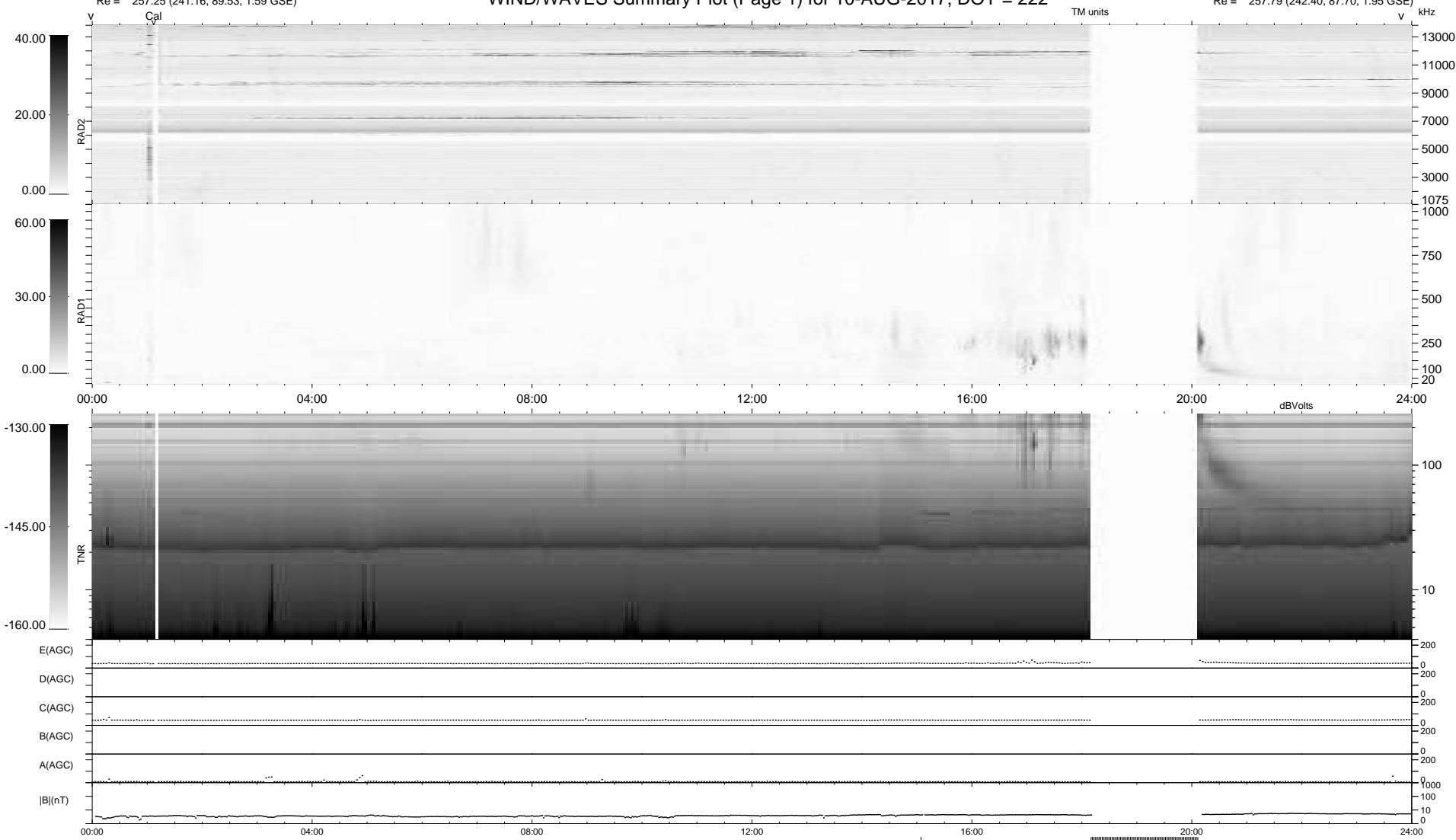
8 bad + 853 good MF/939MF projected (90%) - 78 missing MFs  
 Avg interval = 180 secs  
 Re = 257.25 (241.16, 89.53, 1.59 GSE)

windlib 2.0b

LZ version =

### WIND/WAVES Summary Plot (Page 1) for 10-AUG-2017, DOY = 222

DAILY 2017-08-11 20:02:52  
 Re = 257.79 (242.40, 87.70, 1.95 GSE)



```

RAD2
Antenna  Ey .....
Mode     LIN(1) .....
SUM/SEP  SEP .....
Toggle   OFF .....

RAD1
Antenna  Ex .....
Mode     LIS(2,4) .....
SUM/SEP  SUM .....
Toggle   OFF .....

TNR
Antenna  ExEy .....
Mode     A-32 .....
Sweep    ACE .....
  
```