

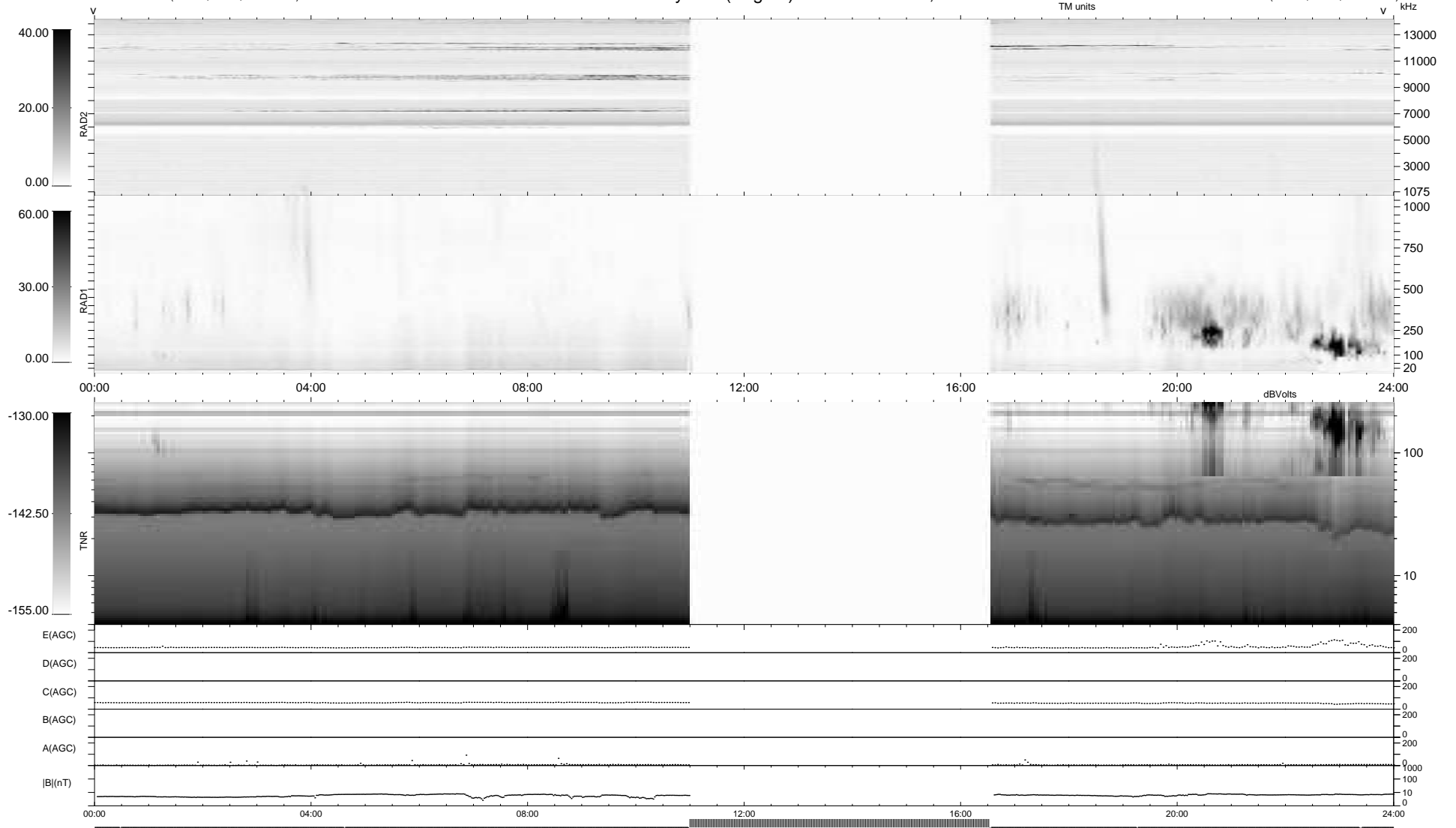
7 bad + 715 good MF/939MF projected (76%) - 217 missing MFs
 Avg interval = 180 secs
 Re = 221.52 (206.67, 79.13, -9.87 GSE)

windlib 2.0b

LZ version =

WIND/WAVES Summary Plot (Page 1) for 06-JUL-2017, DOY = 187

DAILY 2017-07-09 20:41:16
 Re = 222.72 (207.15, 81.25, -9.68 GSE)



```

RAD2
Antenna Ey .....
Mode LIN(1) .....
SUM/SEP SEP .....
Toggle OFF .....

RAD1
Antenna Ex .....
Mode LIS(2,4) .....
SUM/SEP SUM .....
Toggle OFF .....

TNR
Antenna ExEy .....
Mode A-32 .....
Sweep ACE .....
  
```