

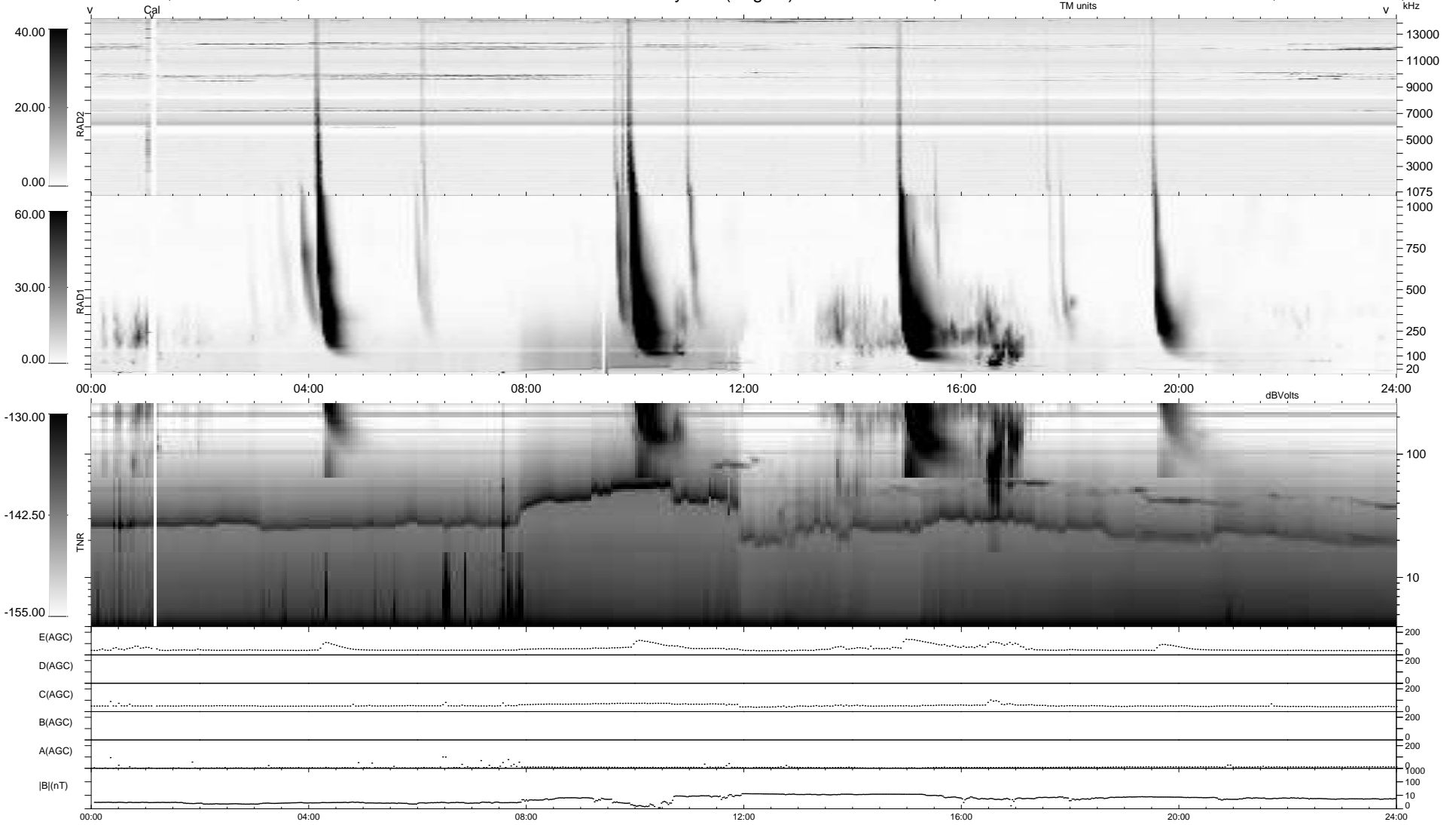
5 bad + 934 good MF/939MF projected (99%) - 0 missing MFs
 Avg interval = 180 secs
 Re = 204.27 (201.73, -31.25, -7.22 GSE)

windlib 2.0b

LZ version =

WIND/WAVES Summary Plot (Page 1) for 03-JUN-2017, DOY = 154

DAILY 2017-06-05 12:58:43
 Re = 203.54 (201.50, -27.77, -7.54 GSE)



RAD2
 Antenna Ey
 Mode LIN(1)
 SUM/SEP SEP
 Toggle OFF
 RAD1
 Antenna Ex
 Mode LIS(2,4)
 SUM/SEP SUM
 Toggle OFF
 TNR
 Antenna ExEy
 Mode A-32
 Sweep ACE