

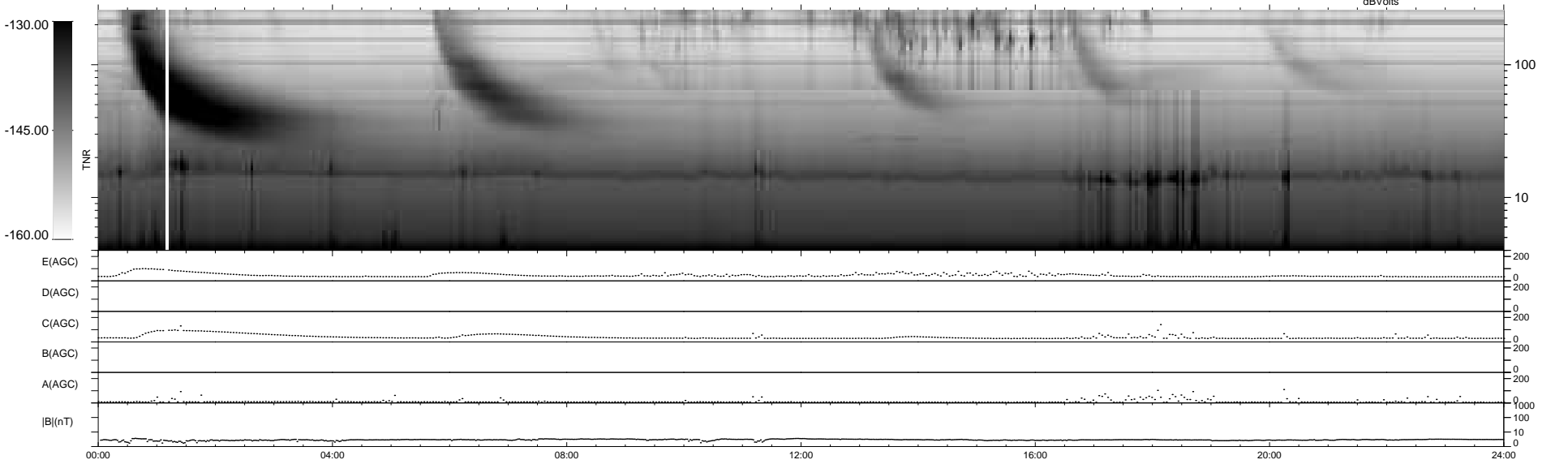
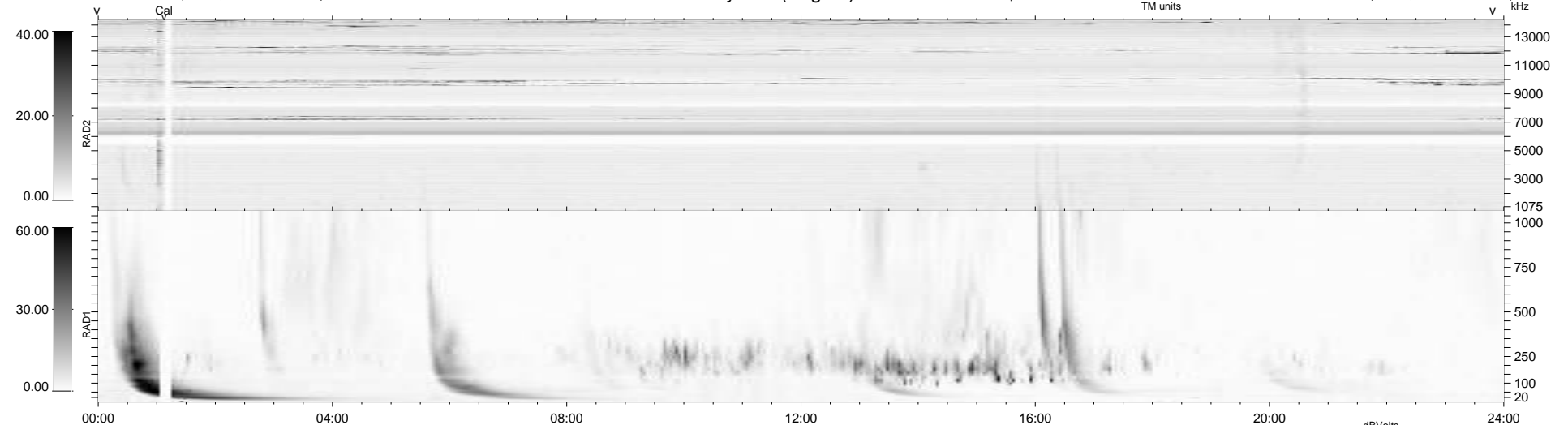
5 bad + 935 good MF/940MF projected (99%) - 0 missing MFs
 Avg interval = 180 secs
 Re = 214.57 (204.63, -64.45, -3.39 GSE)

windlib 2.0b

LZ version =

WIND/WAVES Summary Plot (Page 1) for 24-MAY-2017, DOY = 144

DAILY 2017-06-05 10:01:56
 Re = 213.44 (204.37, -61.43, -3.81 GSE)



E(AGC) 200
 D(AGC) 200
 C(AGC) 200
 B(AGC) 200
 A(AGC) 200
 |B|(nT) 1000
 100
 10
 0

RAD2
 Antenna Ey
 Mode LIN(1)
 SUM/SEP SEP
 Toggle OFF
 RAD1
 Antenna Ex
 Mode LIS(2,4)
 SUM/SEP SUM
 Toggle OFF
 TNR
 Antenna ExEy
 Mode A-32
 Sweep ACE