

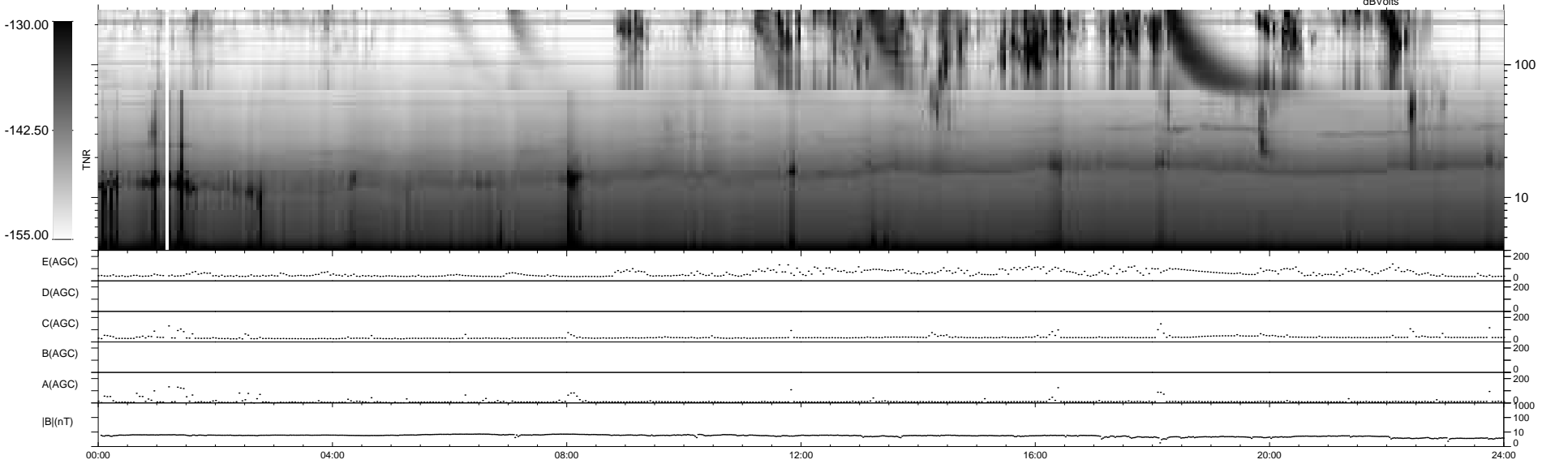
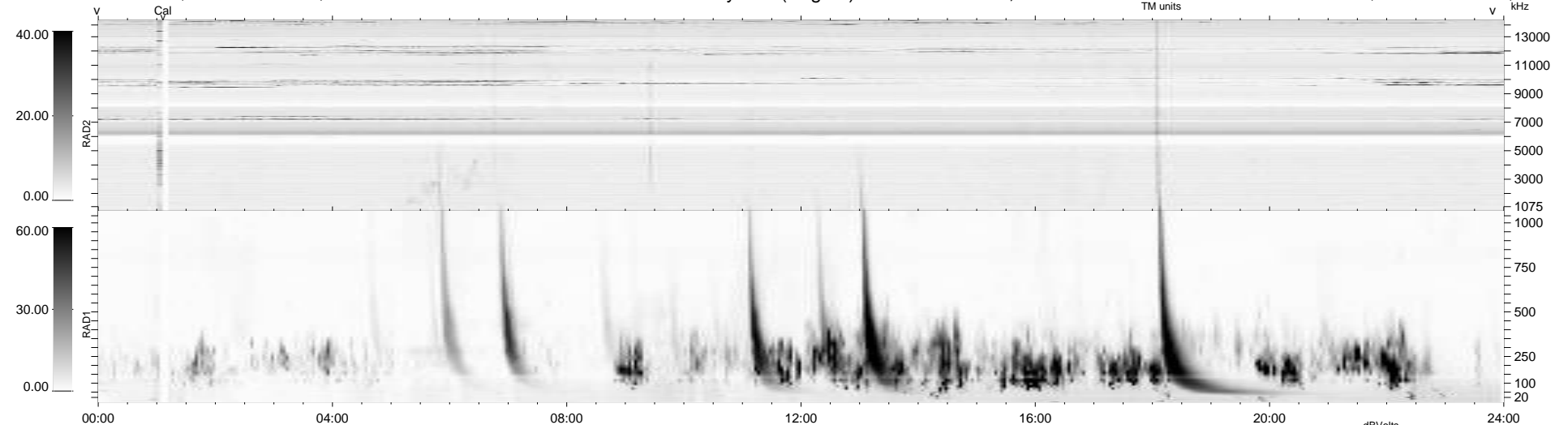
6 bad + 933 good MF/939MF projected (99%) - 0 missing MFs
 Avg interval = 180 secs
 Re = 216.85 (205.16, -70.19, -2.51 GSE)

windlib 2.0b

LZ version =

WIND/WAVES Summary Plot (Page 1) for 22-MAY-2017, DOY = 142

DAILY 2017-06-05 09:48:35
 Re = 215.72 (204.90, -67.40, -2.95 GSE)



RAD2
 Antenna Ey
 Mode LIN(1)
 SUM/SEP SEP
 Toggle OFF

RAD1
 Antenna Ex
 Mode LIS(2,4)
 SUM/SEP SUM
 Toggle OFF

TNR
 Antenna ExEy
 Mode A-32
 Sweep ACE