

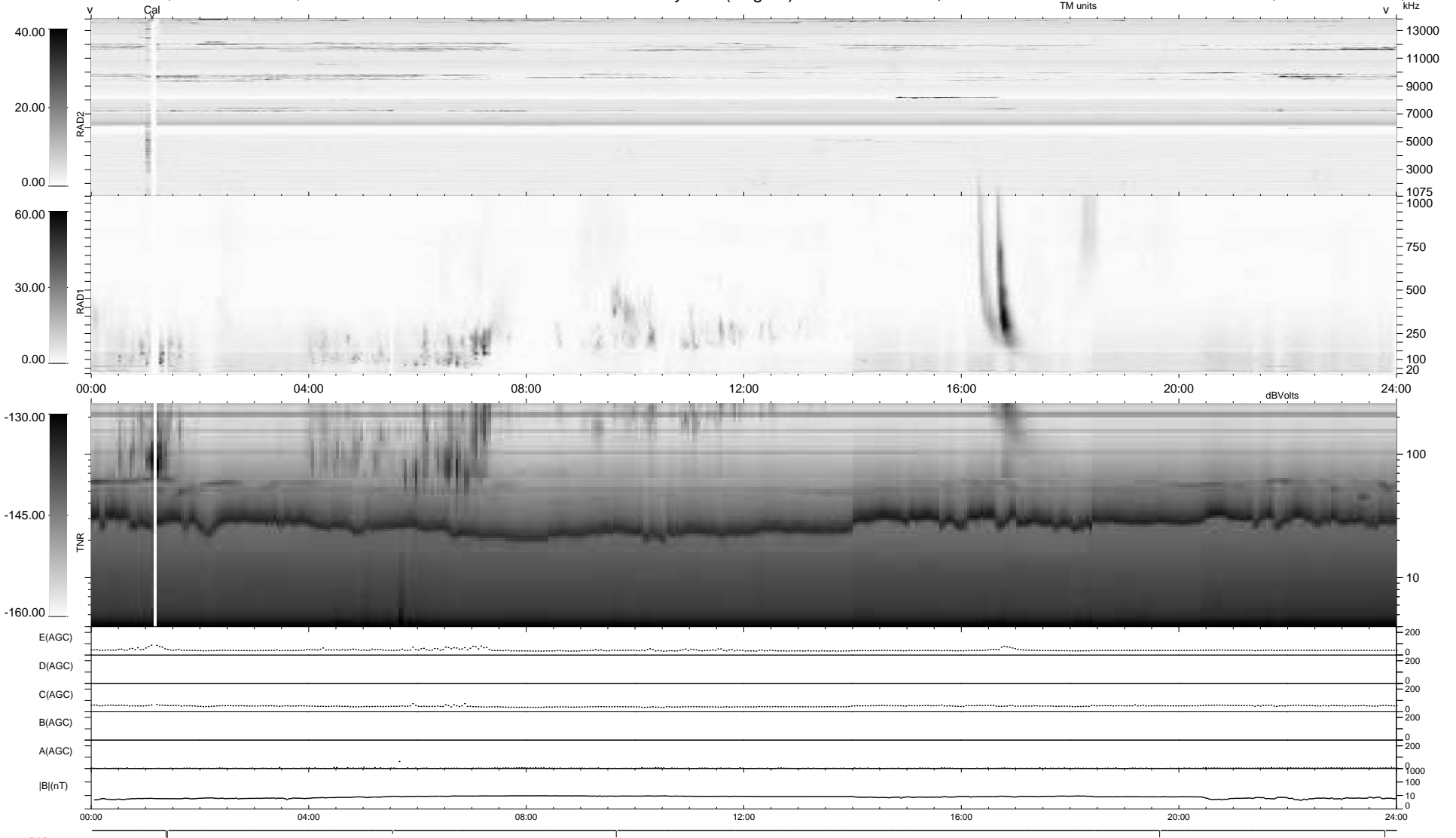
6 bad + 933 good MF/939MF projected (99%) - 0 missing MFs  
 Avg interval = 180 secs  
 Re = 221.40 (206.37, -80.17, -0.68 GSE)

windlib 2.0b

LZ version =

### WIND/WAVES Summary Plot (Page 1) for 18-MAY-2017, DOY = 138

DAILY 2017-06-05 09:43:57  
 Re = 220.26 (206.03, -77.89, -1.14 GSE)



```

RAD2
Antenna Ey .....
Mode LIN(1) .....
SUM/SEP SEP .....
Toggle OFF .....

RAD1
Antenna Ex .....
Mode LIS(2,4) .....
SUM/SEP SUM .....
Toggle OFF .....

TNR
Antenna ExEy .....
Mode A-32 .....
Sweep ACE .....
  
```