

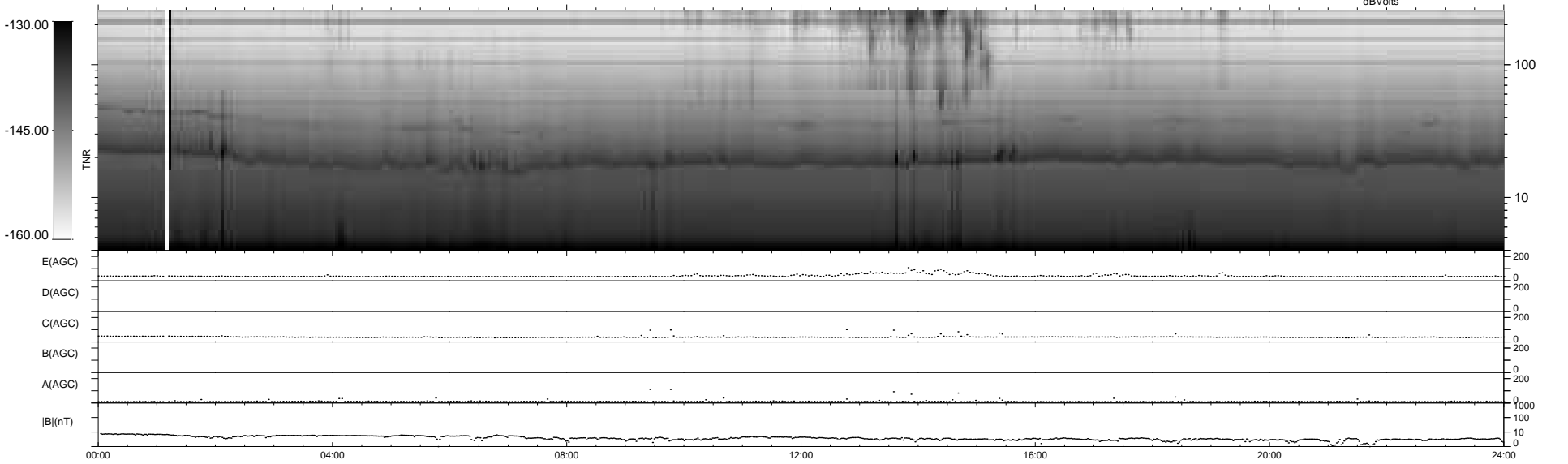
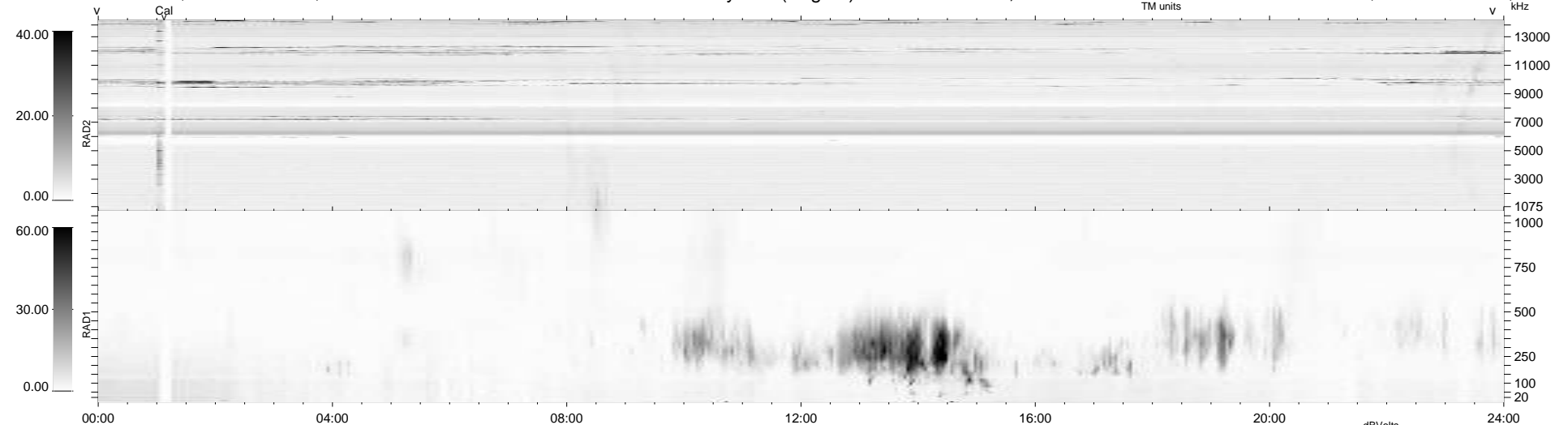
6 bad + 934 good MF/940MF projected (99%) - 0 missing MFs  
 Avg interval = 180 secs  
 Re = 223.70 (207.18, -84.36, 0.23 GSE)

windlib 2.0b

LZ version =

### WIND/WAVES Summary Plot (Page 1) for 16-MAY-2017, DOY = 136

DAILY 2017-05-19 11:52:18  
 Re = 222.55 (206.76, -82.35, -0.22 GSE)



```

RAD2
Antenna Ey .....
Mode LIN(1) .....
SUM/SEP SEP .....
Toggle OFF .....

RAD1
Antenna Ex .....
Mode LIS(2,4) .....
SUM/SEP SUM .....
Toggle OFF .....

TNR
Antenna ExEy .....
Mode A-32 .....
Sweep ACE .....
  
```