

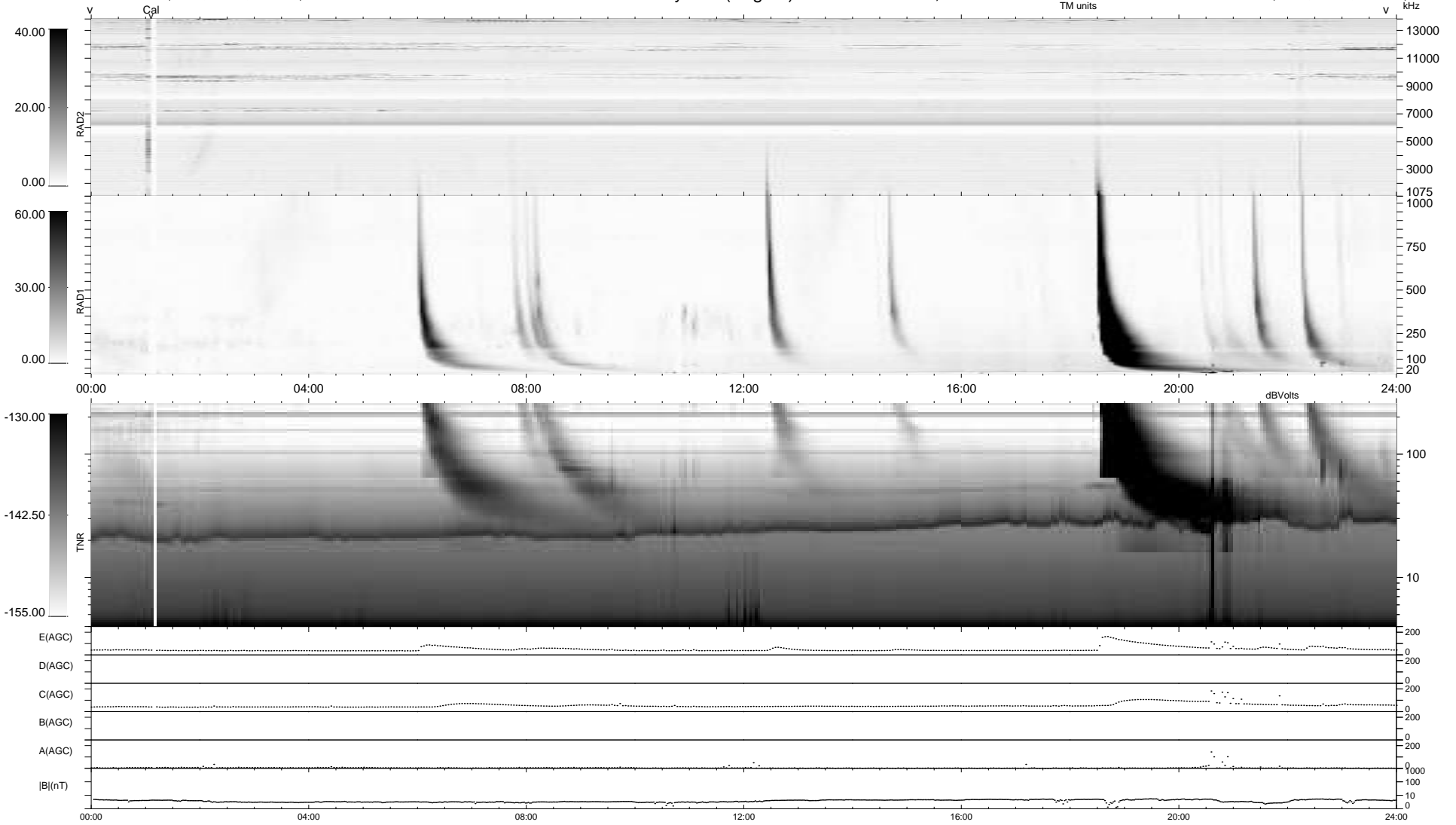
4 bad + 935 good MF/939MF projected (99%) - 0 missing MFs
 Avg interval = 180 secs
 Re = 243.44 (221.37, -101.05, 6.89 GSE)

windlib 2.0b

LZ version =

WIND/WAVES Summary Plot (Page 1) for 30-APR-2017, DOY = 120

DAILY 2017-05-04 12:15:07
 Re = 242.24 (220.21, -100.73, 6.52 GSE)



RAD2
 Antenna Ey
 Mode LIN(1)
 SUM/SEP SEP
 Toggle OFF
 RAD1
 Antenna Ex
 Mode LIS(2,4)
 SUM/SEP SUM
 Toggle OFF
 TNR
 Antenna ExEy
 Mode A-32
 Sweep ACE