

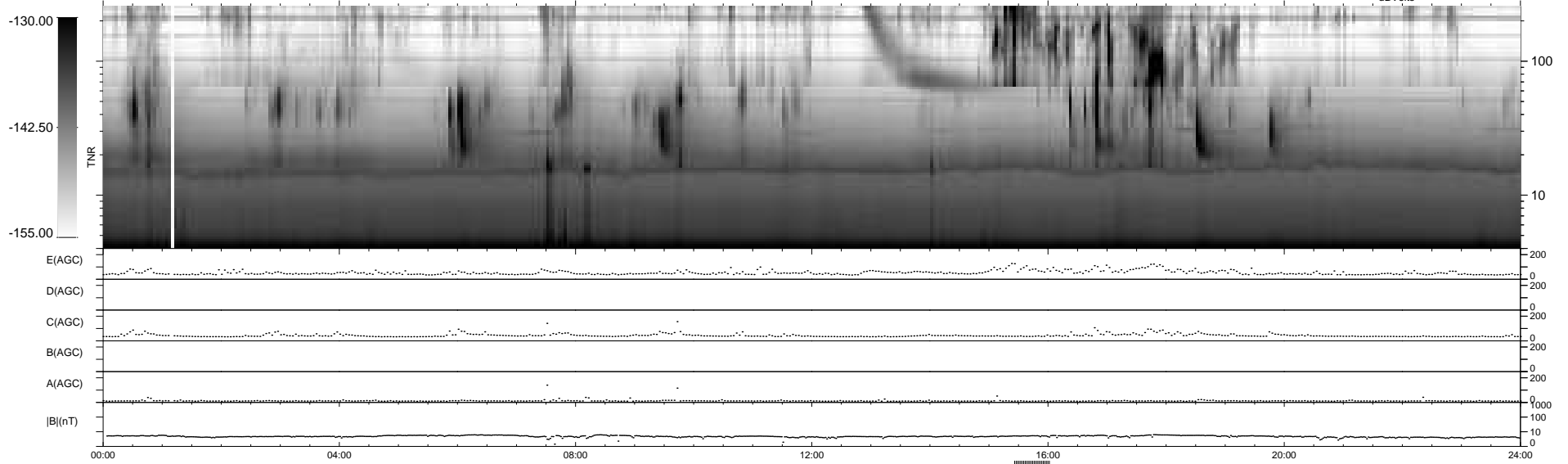
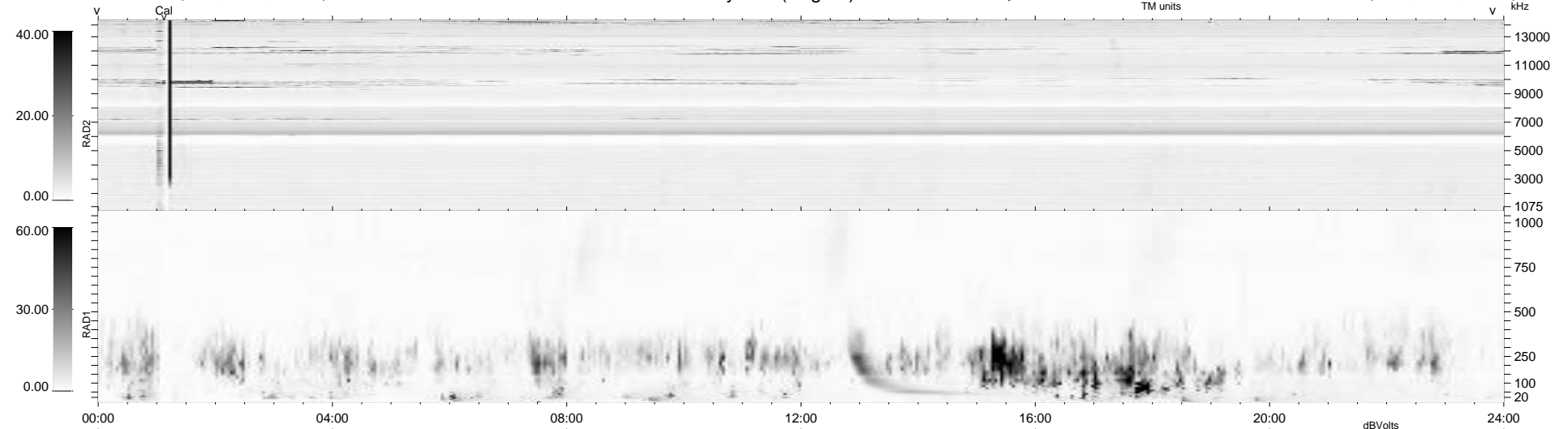
8 bad + 907 good MF/939MF projected (96%) - 24 missing MFs  
 Avg interval = 180 secs  
 Re = -249.56 (228.13, -100.78, 9.02 GSE)

windlib 2.0b

LZ version =

### WIND/WAVES Summary Plot (Page 1) for 24-APR-2017, DOY = 114

DAILY 2017-05-01 13:47:51  
 Re = 248.71 (227.06, -101.12, 8.68 GSE)



RAD2 Antenna Ey .....  
 Mode LIN(1) .....  
 SUM/SEP SEP .....  
 Toggle OFF .....  
 RAD1 Antenna Ex .....  
 Mode LIS(2,4) .....  
 SUM/SEP SUM .....  
 Toggle OFF .....  
 TNR Antenna ExEy .....  
 Mode A-32 .....  
 Sweep ACE .....