

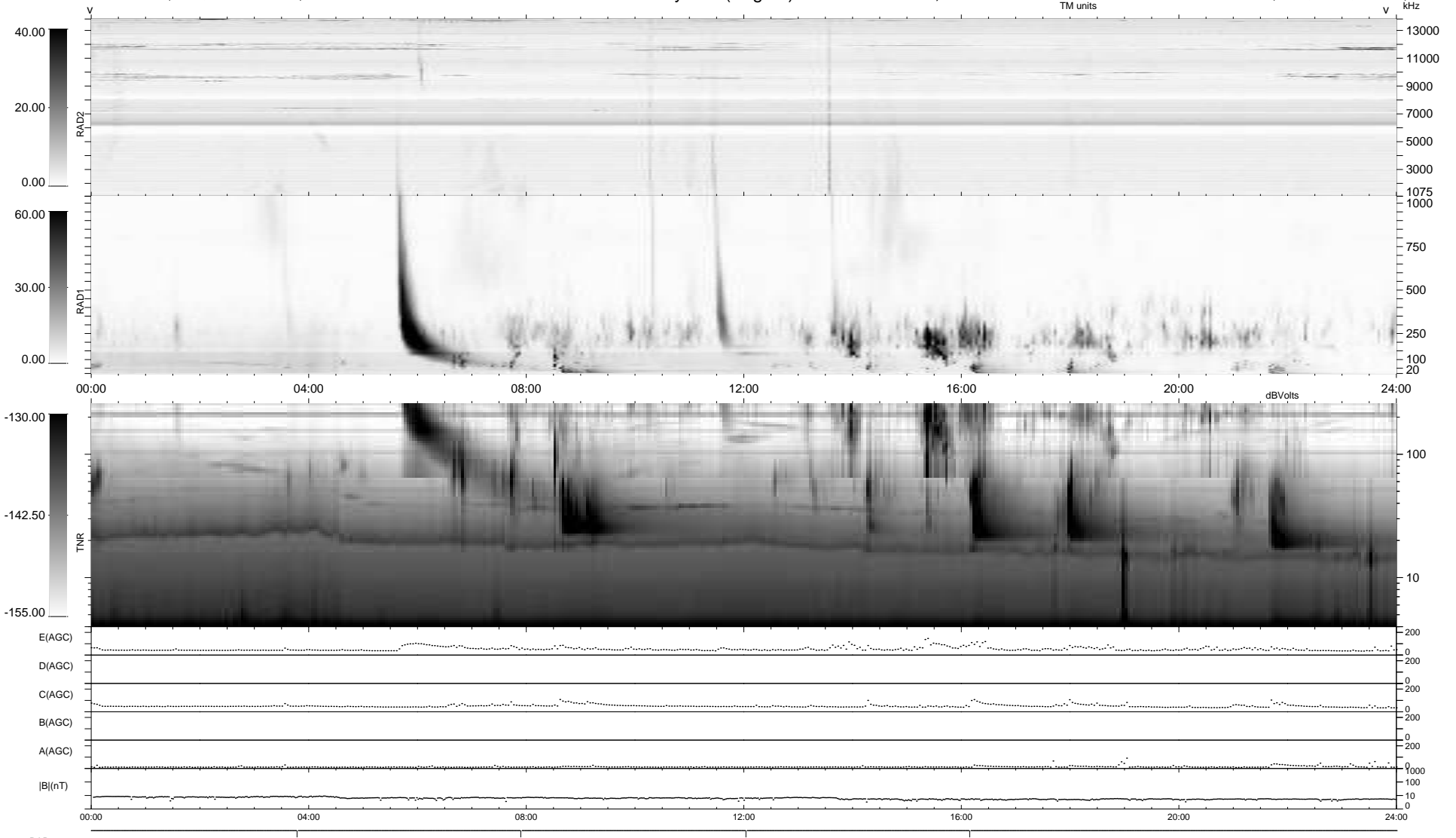
4 bad + 936 good MF/940MF projected (99%) - 0 missing MFs
 Avg interval = 180 secs
 Re = -250.34 (229.19, -100.29, 9.36 GSE)

windlib 2.0b

LZ version =

WIND/WAVES Summary Plot (Page 1) for 23-APR-2017, DOY = 113

DAILY 2017-05-01 13:46:41
 Re = 249.57 (228.14, -100.77, 9.03 GSE)



RAD2
 Antenna Ey
 Mode LIN(1)
 SUM/SEP SEP
 Toggle OFF
 RAD1
 Antenna Ex
 Mode LIS(2,4)
 SUM/SEP SUM
 Toggle OFF
 TNR
 Antenna ExEy
 Mode A-32
 Sweep ACE