

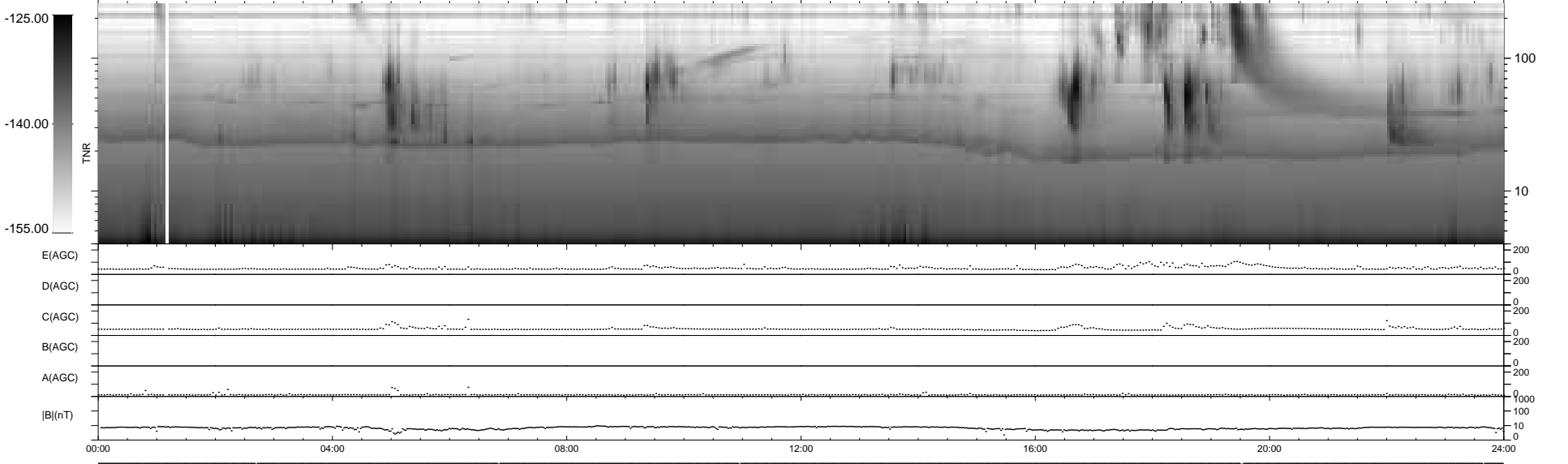
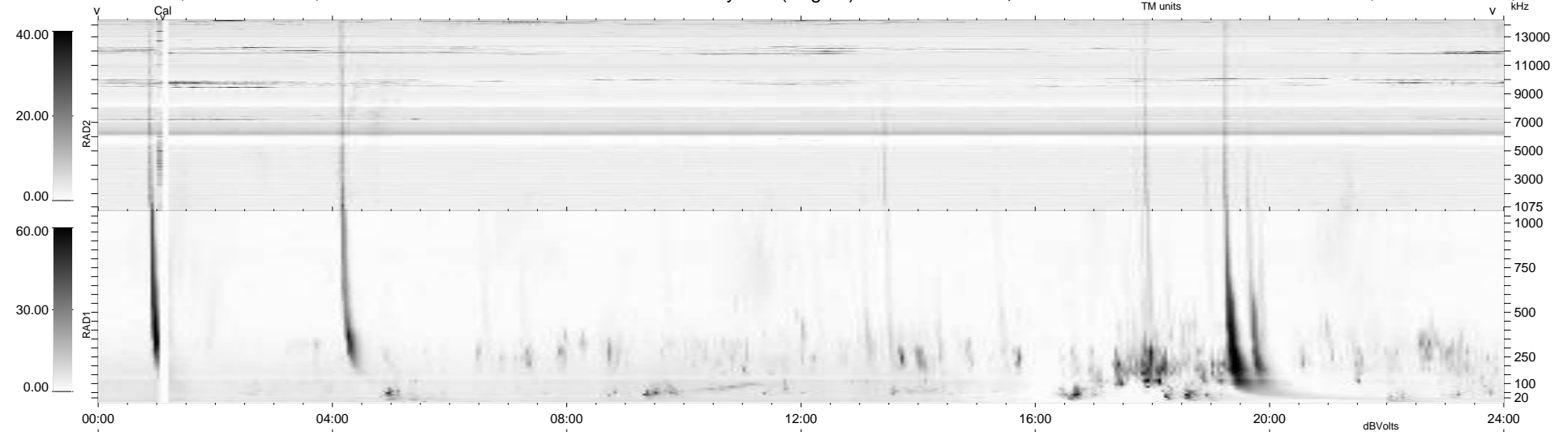
6 bad + 933 good MF/939MF projected (99%) - 0 missing MFs  
 Avg interval = 180 secs  
 Re = -251.06 (230.23, -99.66, 9.68 GSE)

windlib 2.0b

LZ version =

### WIND/WAVES Summary Plot (Page 1) for 22-APR-2017, DOY = 112

DAILY 2017-04-24 10:35:42  
 Re = 250.35 (229.19, -100.28, 9.36 GSE)



RAD2  
 Antenna Ey .....  
 Mode LIN(1) .....  
 SUM/SEP SEP .....  
 Toggle OFF .....  
 RAD1  
 Antenna Ex .....  
 Mode LIS(2,4) .....  
 SUM/SEP SUM .....  
 Toggle OFF .....  
 TNR  
 Antenna ExEy .....  
 Mode A-32 .....  
 Sweep ACE .....