

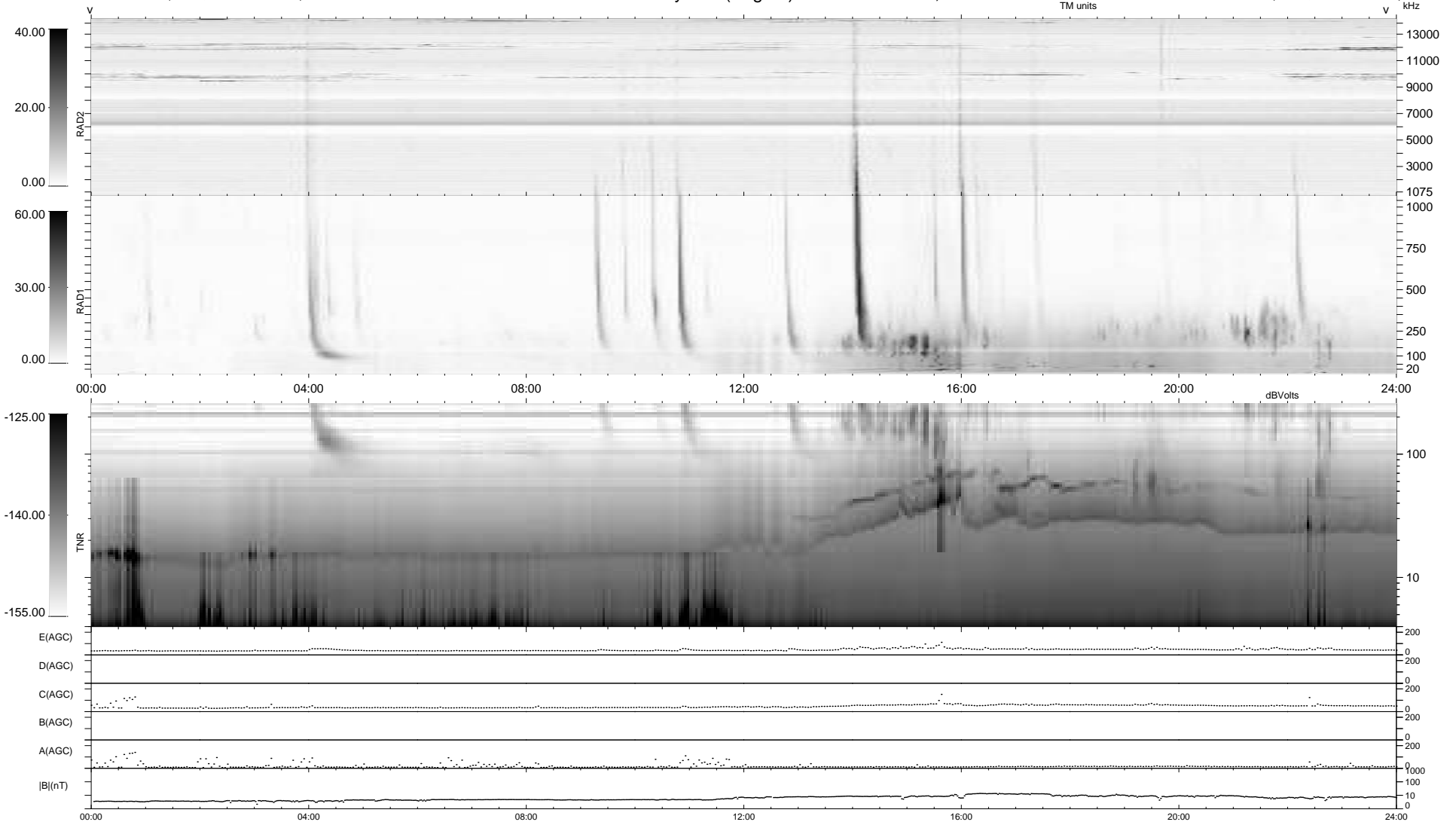
6 bad + 933 good MF/939MF projected (99%) - 0 missing MFs
 Avg interval = 180 secs
 Re = -251.71 (231.26, -98.89, 10.00 GSE)

windlib 2.0b

LZ version =

WIND/WAVES Summary Plot (Page 1) for 21-APR-2017, DOY = 111

DAILY 2017-04-24 10:34:32
 Re = 251.06 (230.23, -99.65, 9.69 GSE)



```

RAD2
Antenna Ey .....
Mode LIN(1) .....
SUM/SEP SEP .....
Toggle OFF .....

RAD1
Antenna Ex .....
Mode LIS(2,4) .....
SUM/SEP SUM .....
Toggle OFF .....

TNR
Antenna ExEy .....
Mode A-32 .....
Sweep ACE .....
  
```