

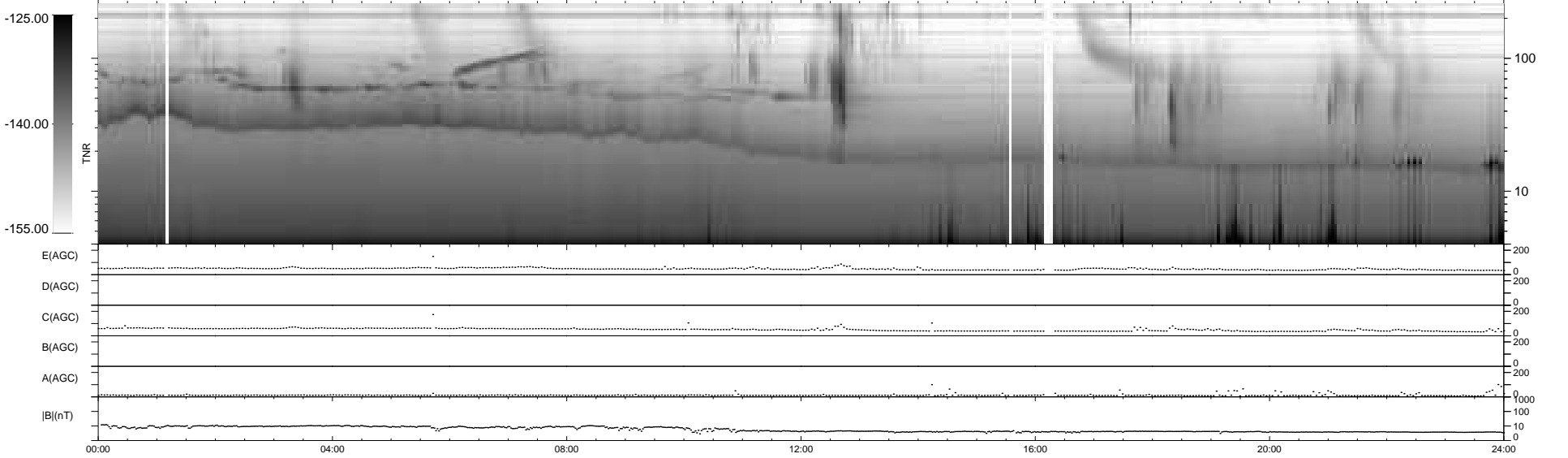
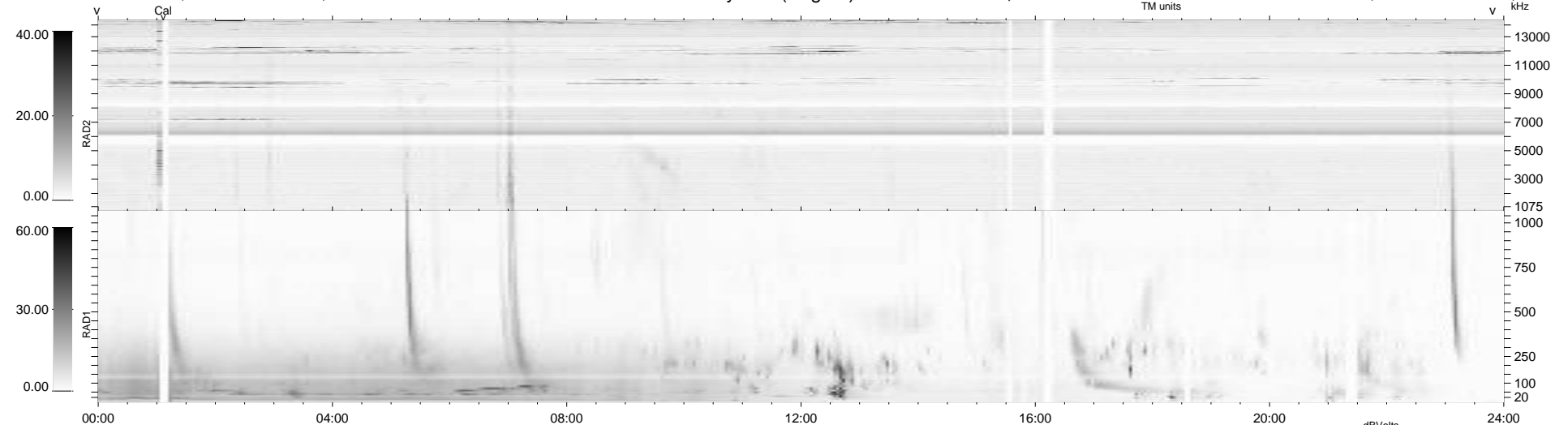
105 bad + 834 good MF/939MF projected (88%) - 0 missing MFs  
 Avg interval = 180 secs  
 Re = -252.31 (232.28, -97.97, 10.30 GSE)

windlib 2.0b

LZ version =

### WIND/WAVES Summary Plot (Page 1) for 20-APR-2017, DOY = 110

DAILY 2017-04-24 10:33:24  
 Re = 251.72 (231.26, -98.88, 10.00 GSE)



RAD2  
 Antenna Ey .....  
 Mode LIN(1) .....  
 SUM/SEP SEP .....  
 Toggle OFF .....  
 RAD1  
 Antenna Ex .....  
 Mode LIS(2,4) .....  
 SUM/SEP SUM .....  
 Toggle OFF .....  
 TNR  
 Antenna ExEy .....  
 Mode A-32 .....  
 Sweep ACE .....