

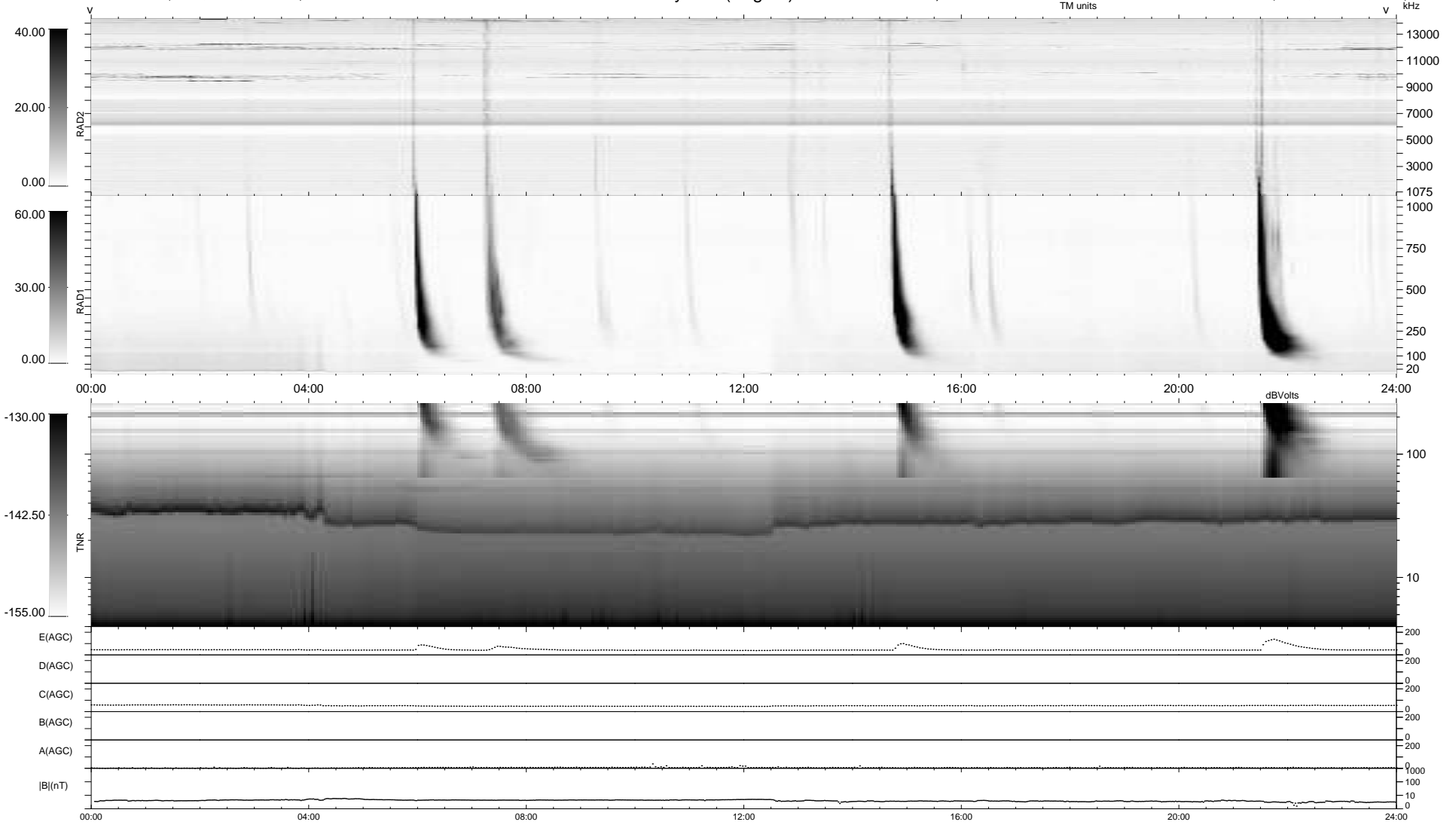
7 bad + 932 good MF/939MF projected (99%) - 0 missing MFs
 Avg interval = 180 secs
 Re = 253.82 (235.37, -94.35, 11.14 GSE)

windlib 2.0b

LZ version =

WIND/WAVES Summary Plot (Page 1) for 17-APR-2017, DOY = 107

DAILY 2017-04-24 10:27:43
 Re = 253.36 (234.34, -95.69, 10.88 GSE)



```

RAD2
Antenna Ey .....
Mode LIN(1) .....
SUM/SEP SEP .....
Toggle OFF .....

RAD1
Antenna Ex .....
Mode LIS(2,4) .....
SUM/SEP SUM .....
Toggle OFF .....

TNR
Antenna ExEy .....
Mode A-32 .....
Sweep ACE .....
  
```