

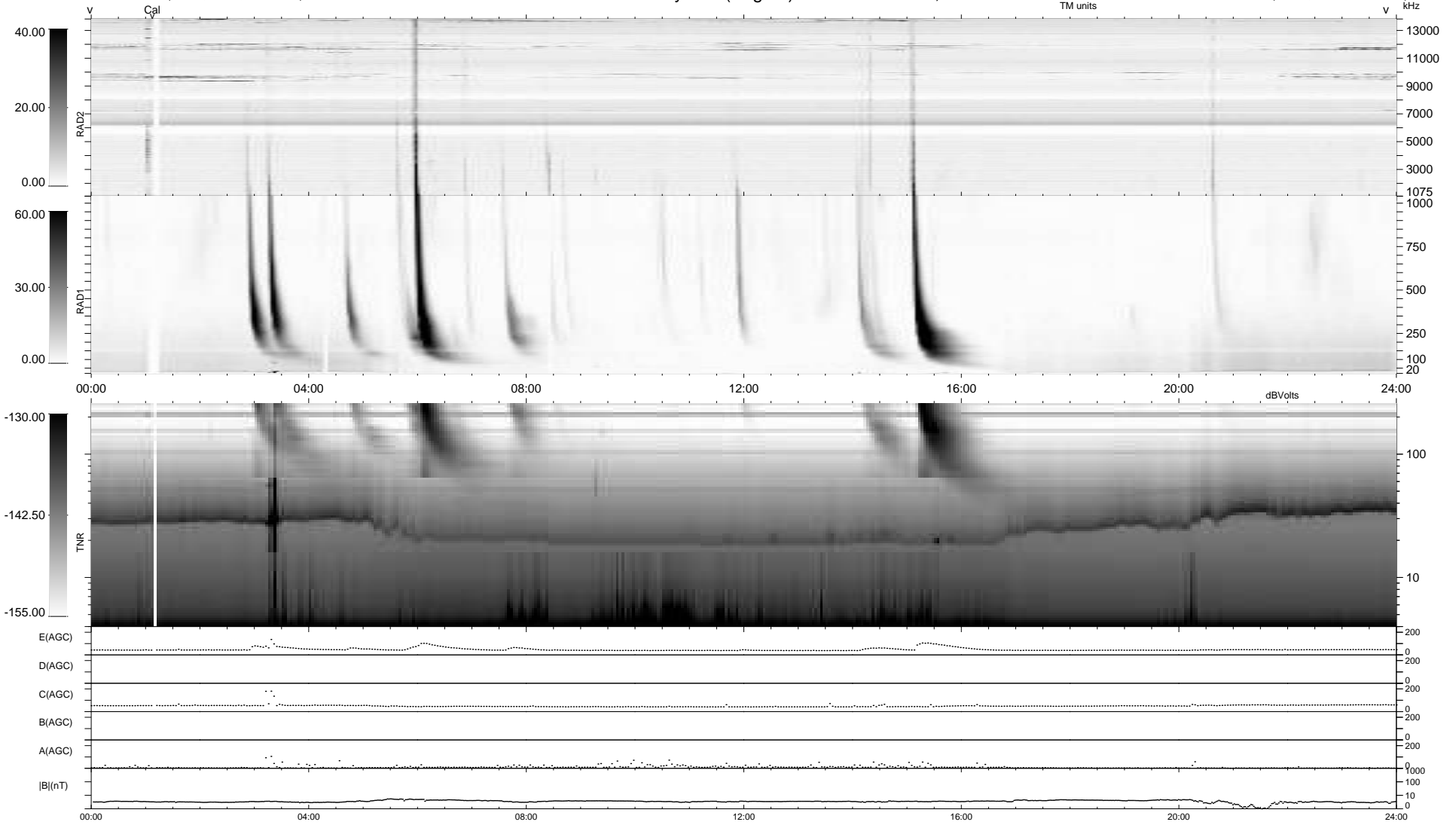
6 bad + 934 good MF/940MF projected (99%) - 0 missing MFs  
 Avg interval = 180 secs  
 Re = -254.25 (236.41, -92.87, 11.39 GSE)

windlib 2.0b

LZ version =

### WIND/WAVES Summary Plot (Page 1) for 16-APR-2017, DOY = 106

DAILY 2017-04-24 10:26:32  
 Re = 253.82 (235.38, -94.34, 11.14 GSE)



RAD2  
 Antenna Ey .....  
 Mode LIN(1) .....  
 SUM/SEP SEP .....  
 Toggle OFF .....  
 RAD1  
 Antenna Ex .....  
 Mode LIS(2,4) .....  
 SUM/SEP SUM .....  
 Toggle OFF .....  
 TNR  
 Antenna ExEy .....  
 Mode A-32 .....  
 Sweep ACE .....