

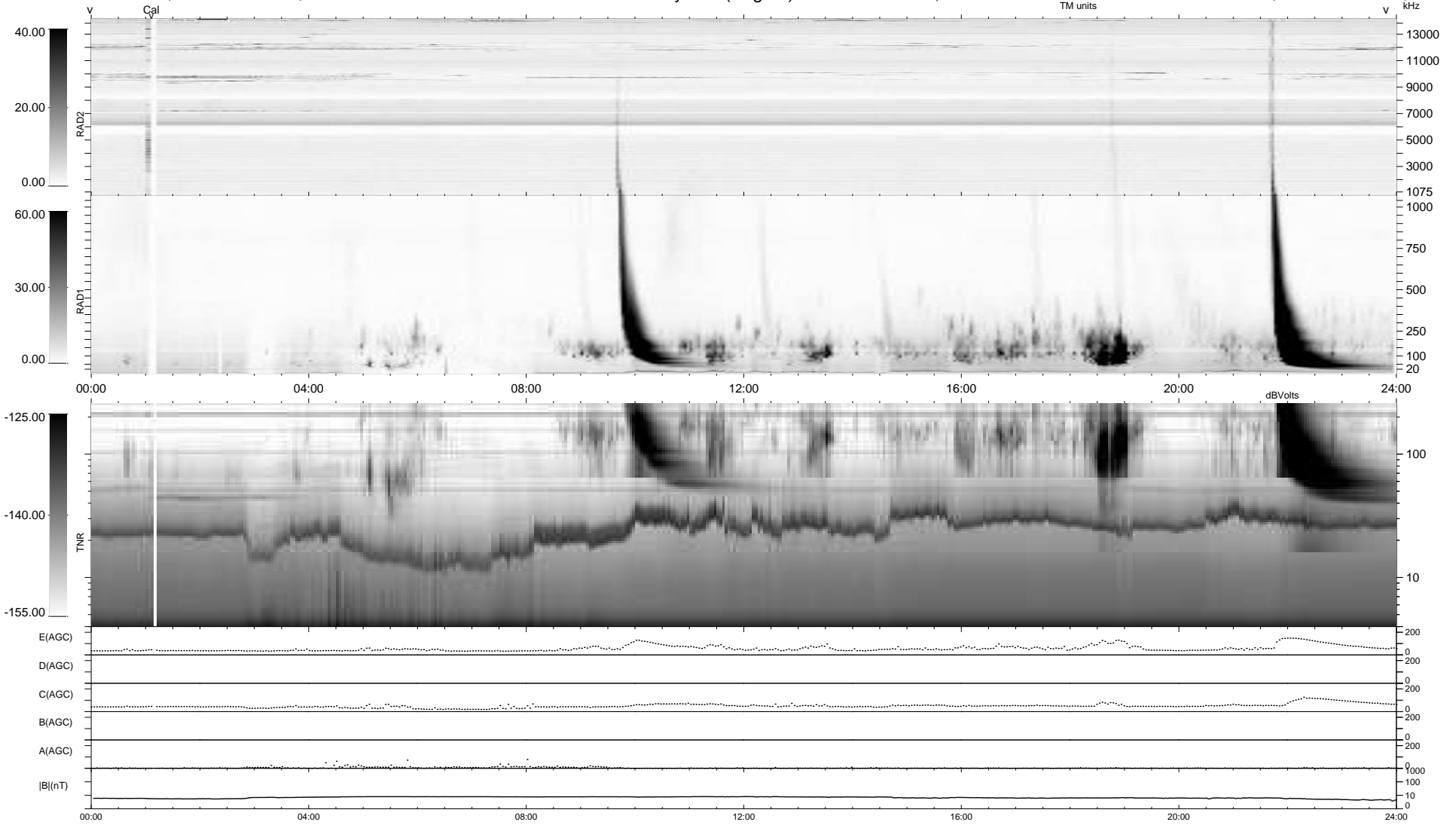
4 bad + 935 good MF/939MF projected (99%) - 0 missing MFs  
 Avg interval = 180 secs  
 Re = 255.05 (238.53, -89.51, 11.86 GSE)

windlib 2.0b

LZ version =

### WIND/WAVES Summary Plot (Page 1) for 14-APR-2017, DOY = 104

DAILY 2017-04-17 09:39:03  
 Re = 254.66 (237.47, -91.24, 11.63 GSE)



RAD2  
 Antenna Ey  
 Mode LIN(1)  
 SUM/SEP SEP  
 Toggle OFF

RAD1  
 Antenna Ex  
 Mode LIS(2,4)  
 SUM/SEP SUM  
 Toggle OFF

TNR  
 Antenna ExEy  
 Mode A-32  
 Sweep ACE