

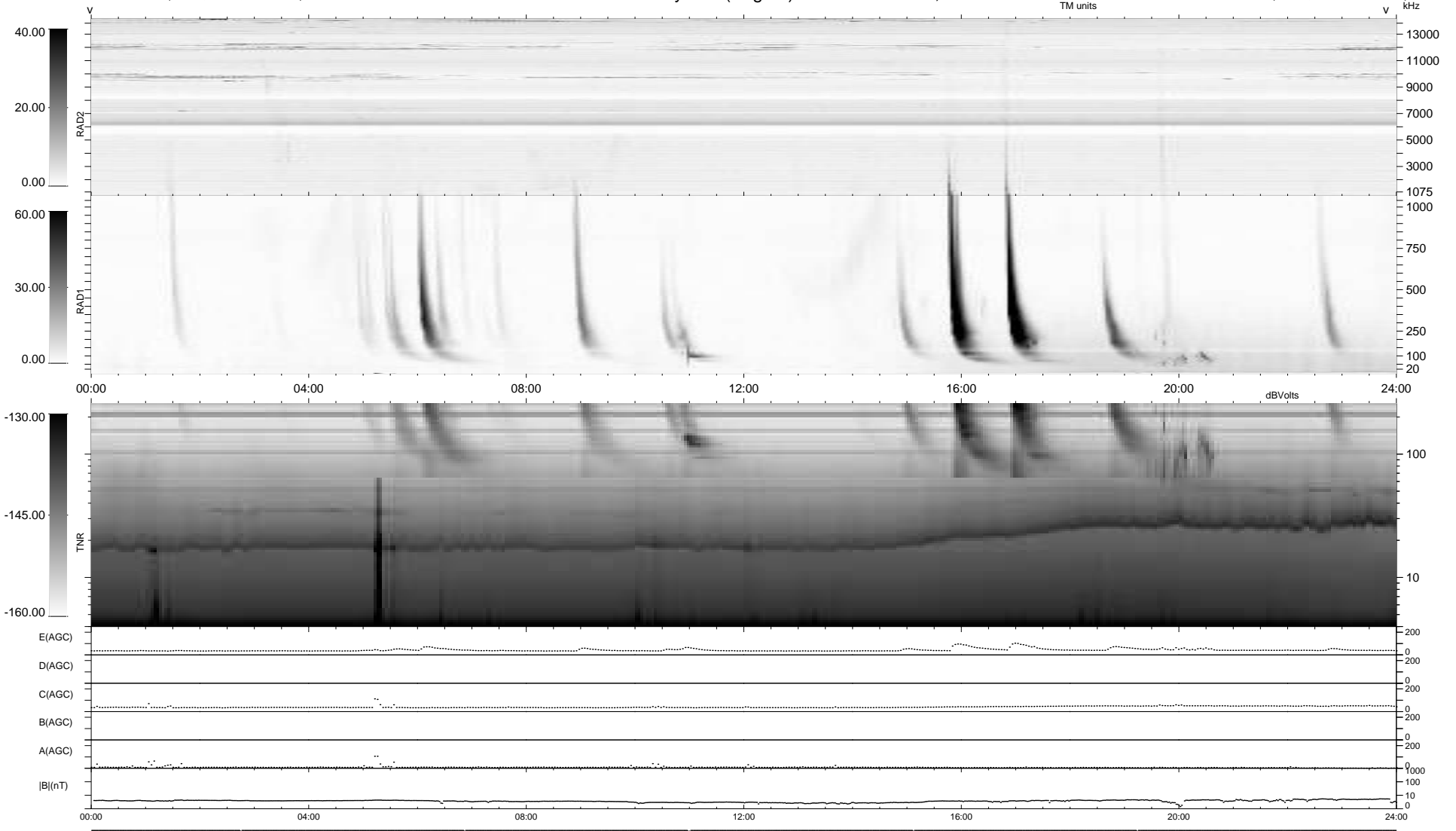
6 bad + 933 good MF/939MF projected (99%) - 0 missing MFs
 Avg interval = 180 secs
 Re = 255.43 (239.62, -87.65, 12.06 GSE)

windlib 2.0b

LZ version =

WIND/WAVES Summary Plot (Page 1) for 13-APR-2017, DOY = 103

DAILY 2017-04-17 09:37:49
 Re = 255.05 (238.54, -89.50, 11.86 GSE)



RAD2
 Antenna Ey
 Mode LIN(1)
 SUM/SEP SEP
 Toggle OFF
 RAD1
 Antenna Ex
 Mode LIS(2,4)
 SUM/SEP SUM
 Toggle OFF
 TNR
 Antenna ExEy
 Mode A-32
 Sweep ACE