

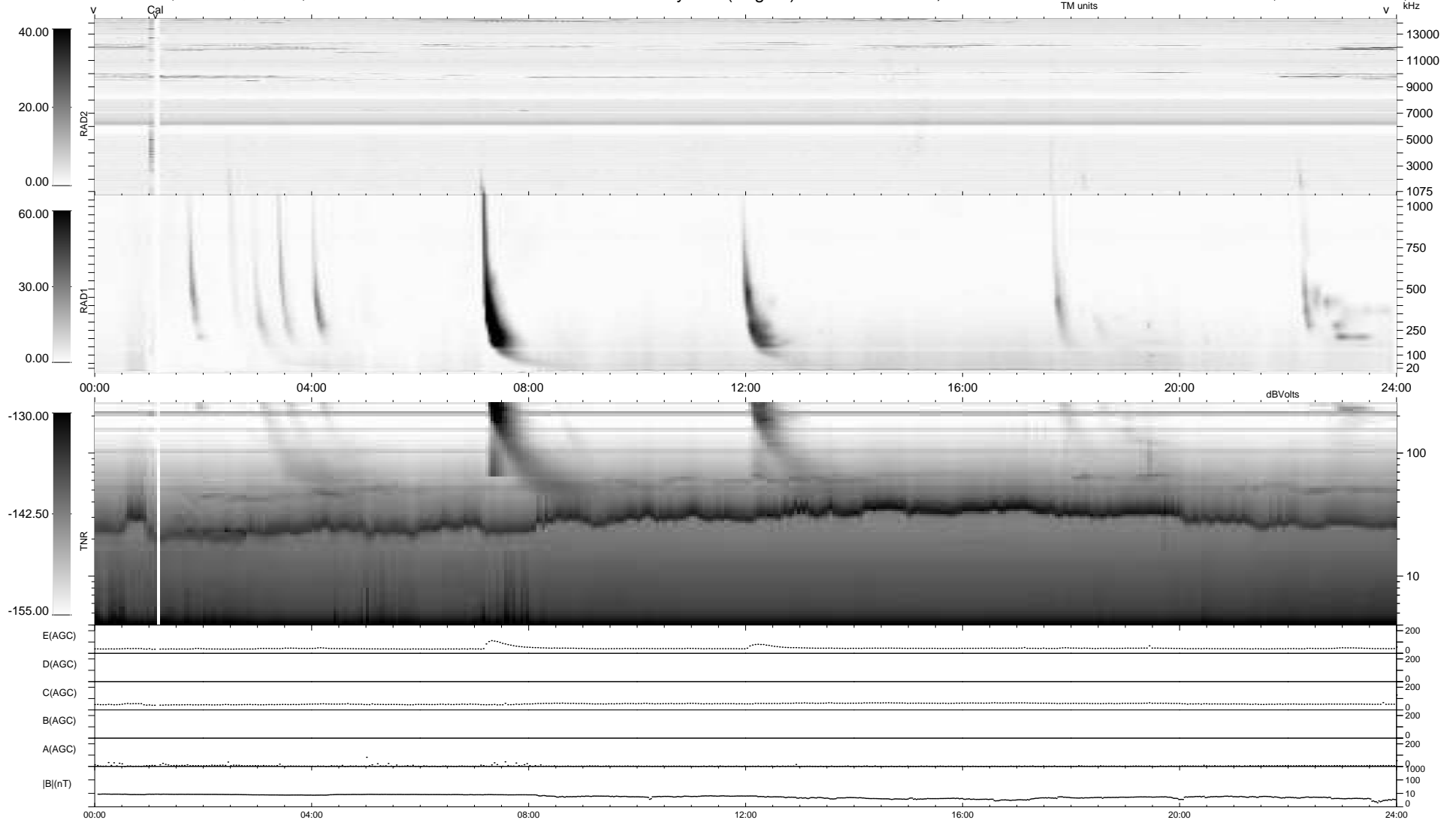
6 bad + 933 good MF/939MF projected (99%) - 0 missing MFs
 Avg interval = 180 secs
 Re = 256.54 (242.95, -81.43, 12.60 GSE)

windlib 2.0b

LZ version =

WIND/WAVES Summary Plot (Page 1) for 10-APR-2017, DOY = 100

DAILY 2017-04-12 12:44:34
 Re = 256.17 (241.83, -83.59, 12.44 GSE)



```

RAD2
Antenna Ey .....
Mode LIN(1) .....
SUM/SEP SEP .....
Toggle OFF .....

RAD1
Antenna Ex .....
Mode LIS(2,4) .....
SUM/SEP SUM .....
Toggle OFF .....

TNR
Antenna ExEy .....
Mode A-32 .....
Sweep ACE .....
  
```