

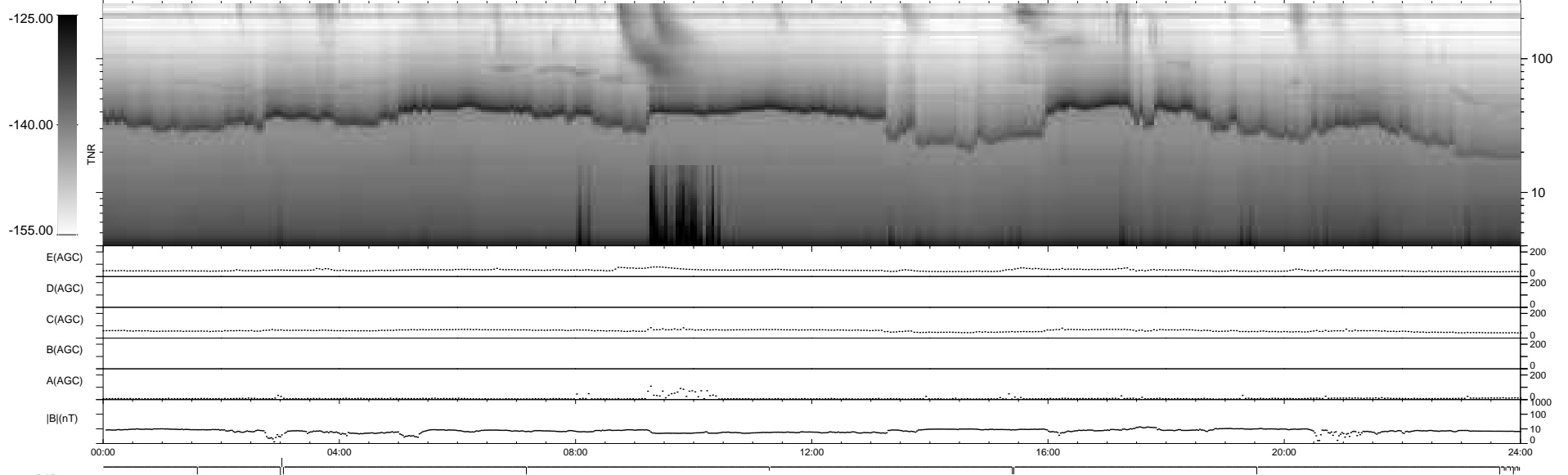
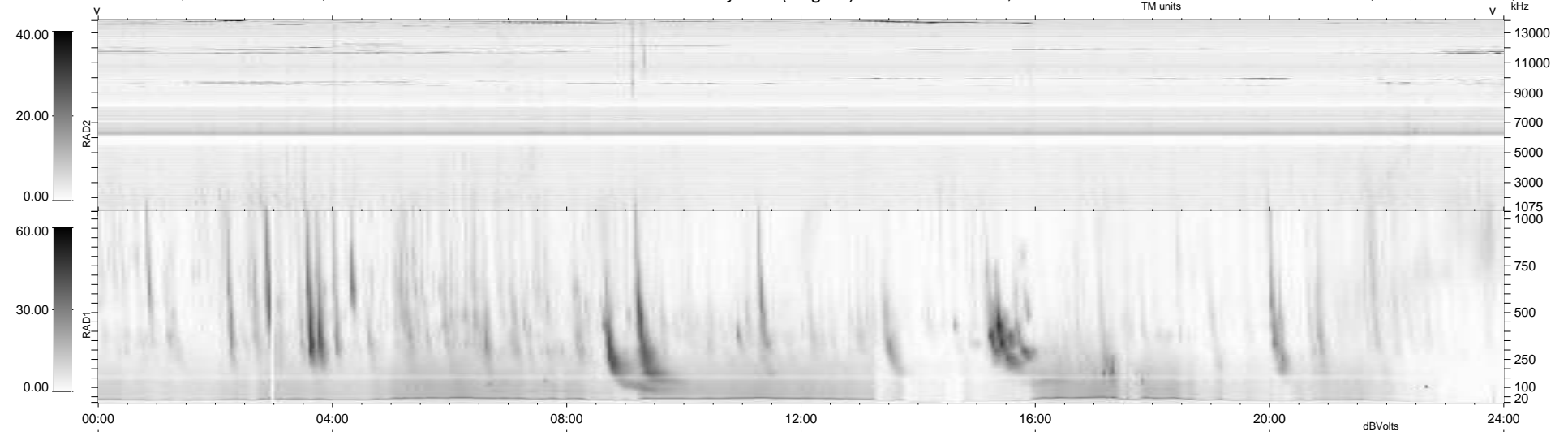
16 bad + 922 good MF/939MF projected (98%) - 1 missing MF
 Avg interval = 180 secs
 Re = 258.47 (248.63, -69.39, 13.22 GSE)

windlib 2.0b

LZ version =

WIND/WAVES Summary Plot (Page 1) for 05-APR-2017, DOY = 95

DAILY 2017-04-12 12:38:15
 Re = 258.08 (247.51, -71.91, 13.12 GSE)



```

RAD2
Antenna Ey .....
Mode LIN(1) .....
SUM/SEP SEP .....
Toggle OFF .....

RAD1
Antenna Ex .....
Mode LIS(2,4) .....
SUM/SEP SUM .....
Toggle OFF .....

TNR
Antenna ExEy .....
Mode A-32 .....
Sweep ACE .....
  
```