

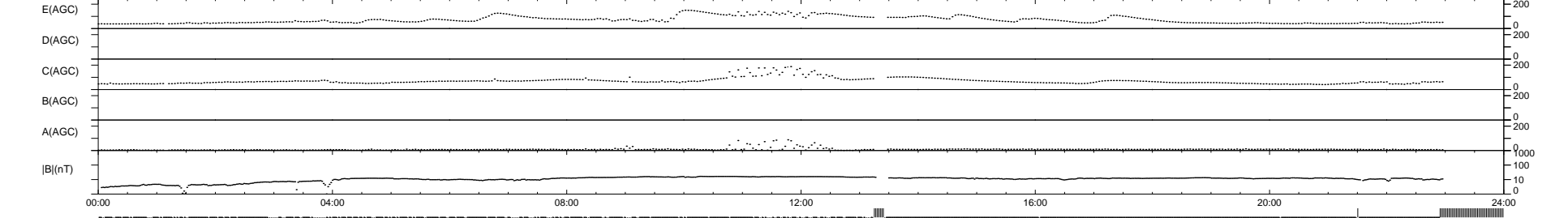
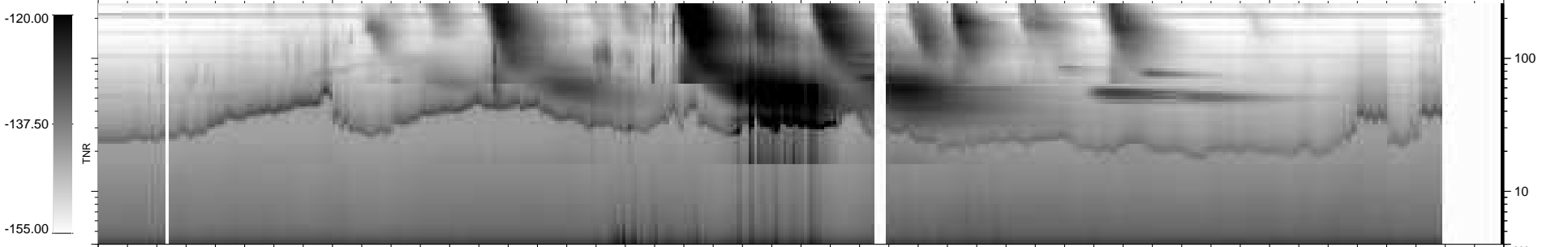
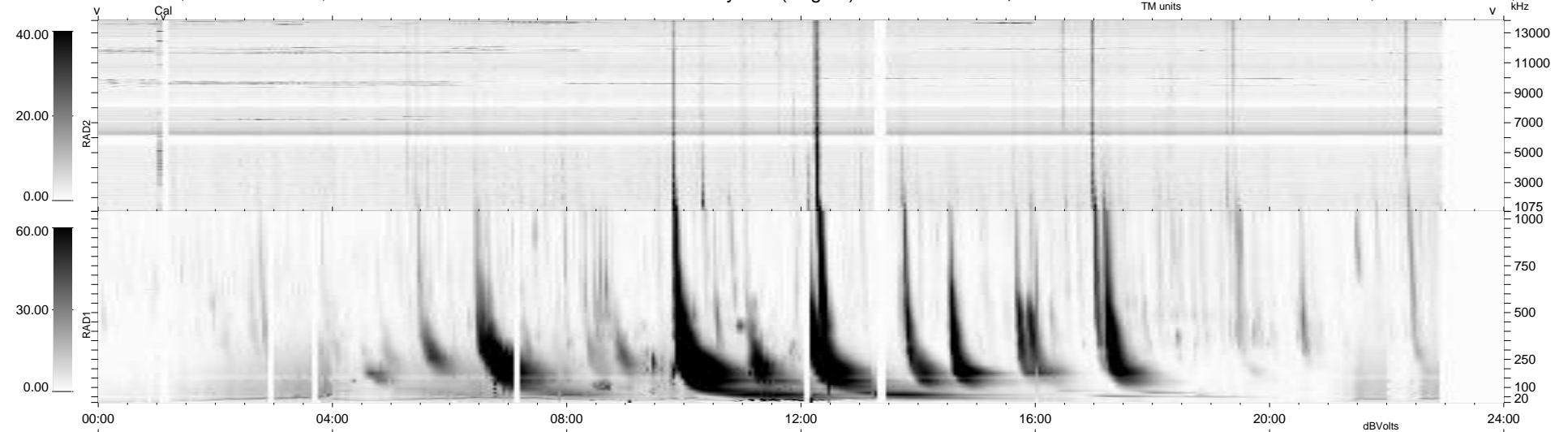
164 bad + 724 good MF/939MF projected (77%) - 51 missing MFs
 Avg interval = 180 secs
 Re = 258.86 (249.74, -66.81, 13.31 GSE)

windlib 2.0b

LZ version =

WIND/WAVES Summary Plot (Page 1) for 04-APR-2017, DOY = 94

DAILY 2017-04-06 13:57:00
 Re = 258.48 (248.64, -69.38, 13.22 GSE)



```

RAD2
Antenna Ey
Mode LIN(1)
SUM/SEP SEP
Toggle OFF

RAD1
Antenna Ex
Mode LIS(2,4)
SUM/SEP SUM
Toggle OFF

TNR
Antenna ExEy
Mode A-32
Sweep ACE
  
```