

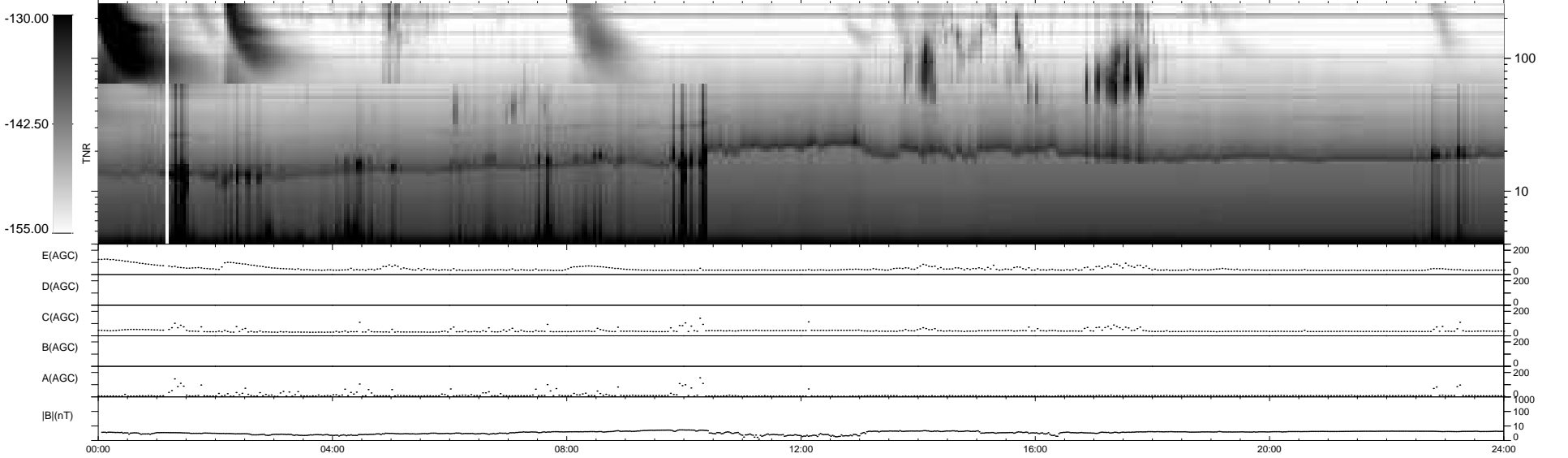
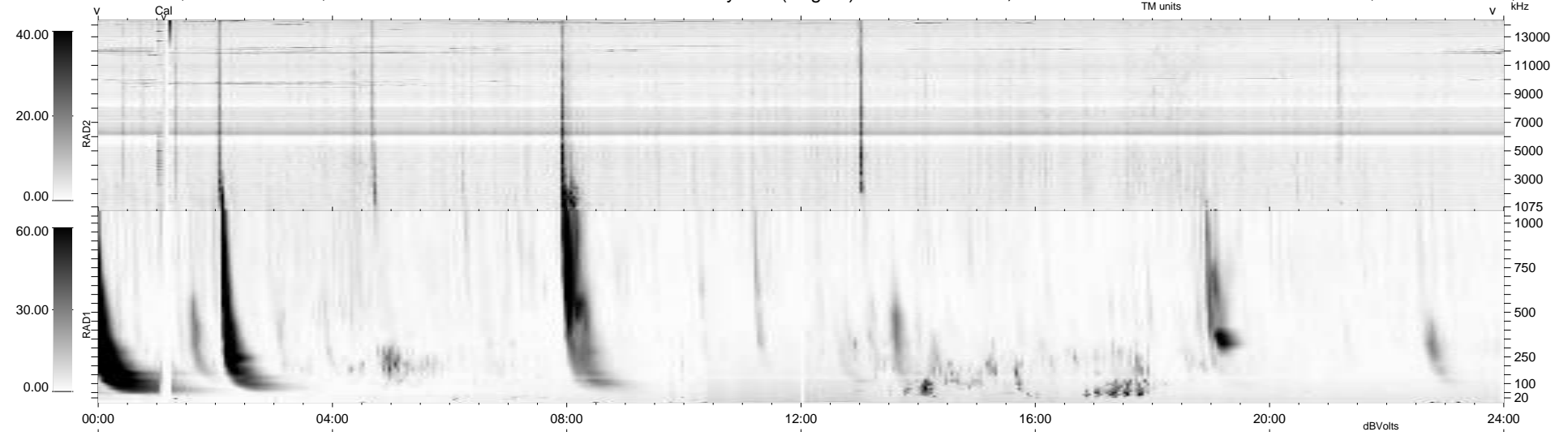
4 bad + 935 good MF/939MF projected (99%) - 0 missing MFs
 Avg interval = 180 secs
 Re = 259.60 (251.85, -61.51, 13.45 GSE)

windlib 2.0b

LZ version =

WIND/WAVES Summary Plot (Page 1) for 02-APR-2017, DOY = 92

DAILY 2017-04-04 15:14:56
 Re = 259.24 (250.82, -64.16, 13.38 GSE)



RAD2
 Antenna Ey
 Mode LIN(1)
 SUM/SEP SEP
 Toggle OFF
 RAD1
 Antenna Ex
 Mode LIS(2,4)
 SUM/SEP SUM
 Toggle OFF
 TNR
 Antenna ExEy
 Mode A-32
 Sweep ACE