

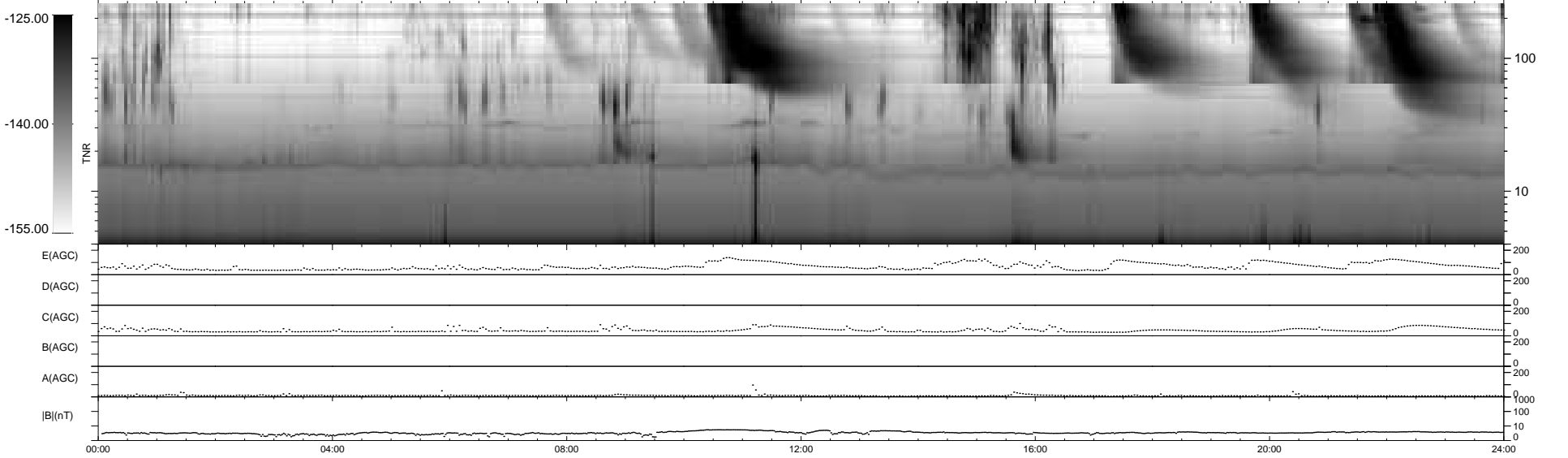
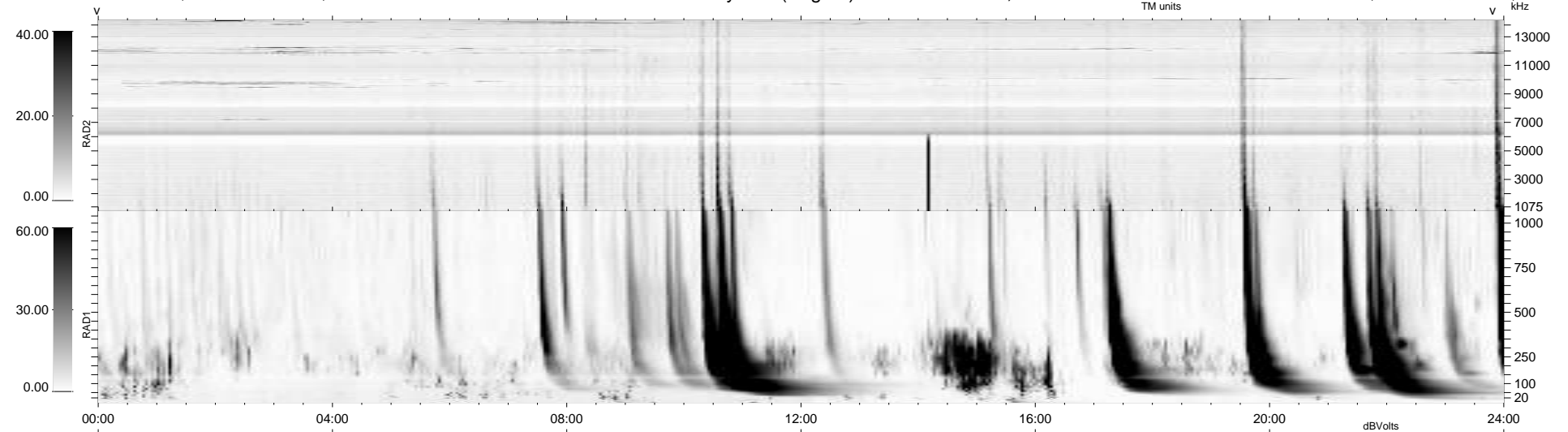
10 bad + 929 good MF/939MF projected (98%) - 0 missing MFs
 Avg interval = 180 secs
 Re = 259.94 (252.84, -58.79, 13.51 GSE)

windlib 2.0b

LZ version =

WIND/WAVES Summary Plot (Page 1) for 01-APR-2017, DOY = 91

DAILY 2017-04-04 15:13:47
 Re = 259.60 (251.86, -61.49, 13.45 GSE)



RAD2
 Antenna Ey
 Mode LIN(1)
 SUM/SEP SEP
 Toggle OFF

RAD1
 Antenna Ex
 Mode LIS(2,4)
 SUM/SEP SUM
 Toggle OFF

TNR
 Antenna ExEy
 Mode A-32
 Sweep ACE