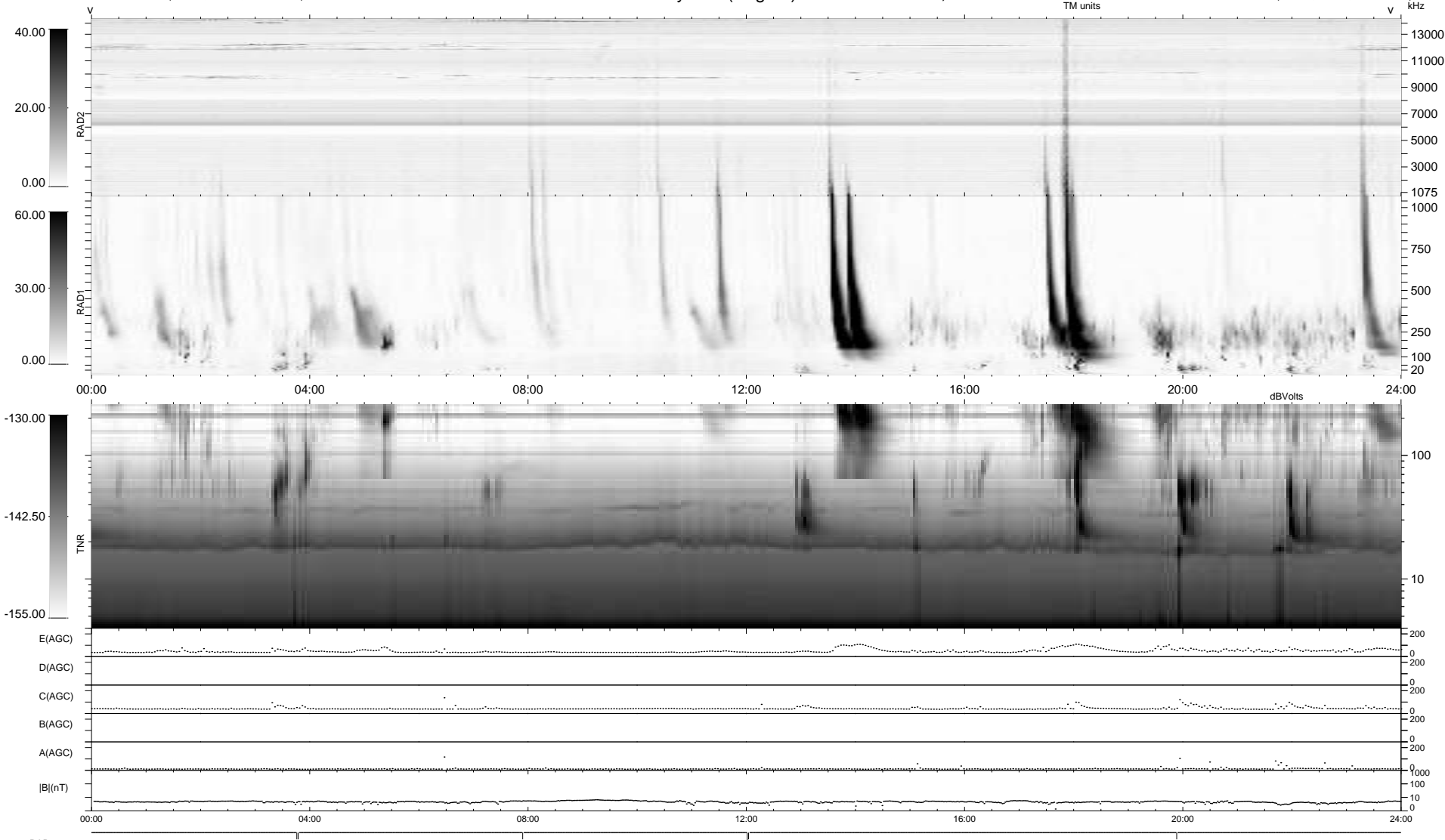


6 bad + 933 good MF/939MF projected (99%) - 0 missing MFs
 Avg interval = 180 secs
 Re = -260.49 (254.63, -53.24, 13.60 GSE)

windlib 2.0b LZ version =
 DAILY 2017-04-04 15:11:57
 Re = 260.24 (253.77, -56.02, 13.56 GSE)

WIND/WAVES Summary Plot (Page 1) for 30-MAR-2017, DOY = 89



RAD2 Antenna Ey
 Mode LIN(1)
 SUM/SEP SEP
 Toggle OFF
 RAD1 Antenna Ex
 Mode LIS(2,4)
 SUM/SEP SUM
 Toggle OFF
 TNR Antenna ExEy
 Mode A-32
 Sweep ACE