

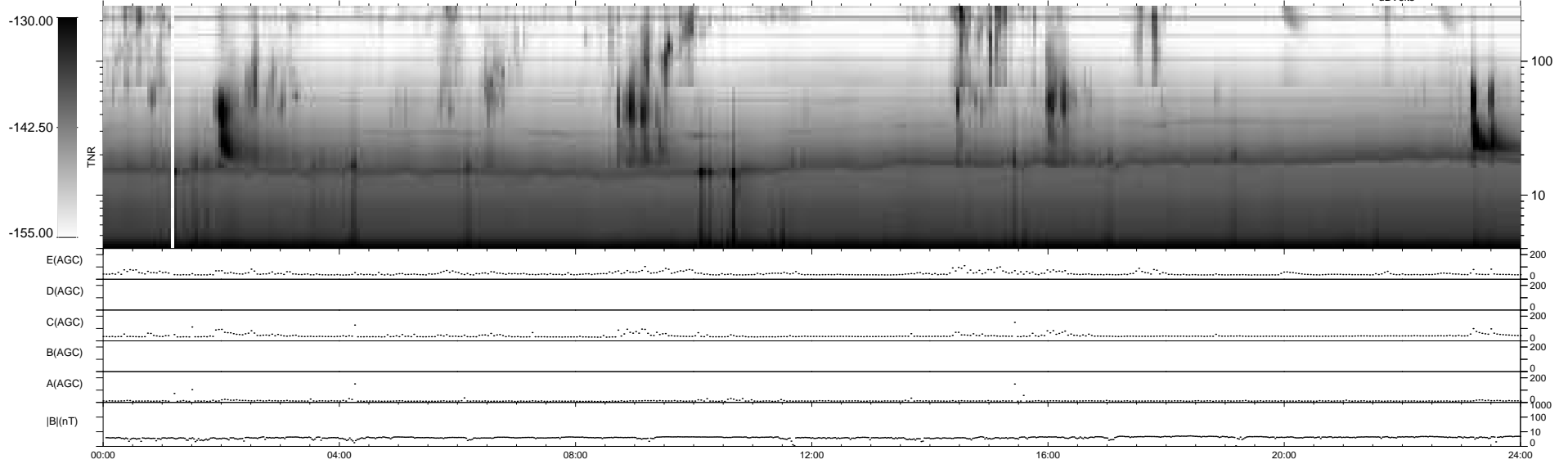
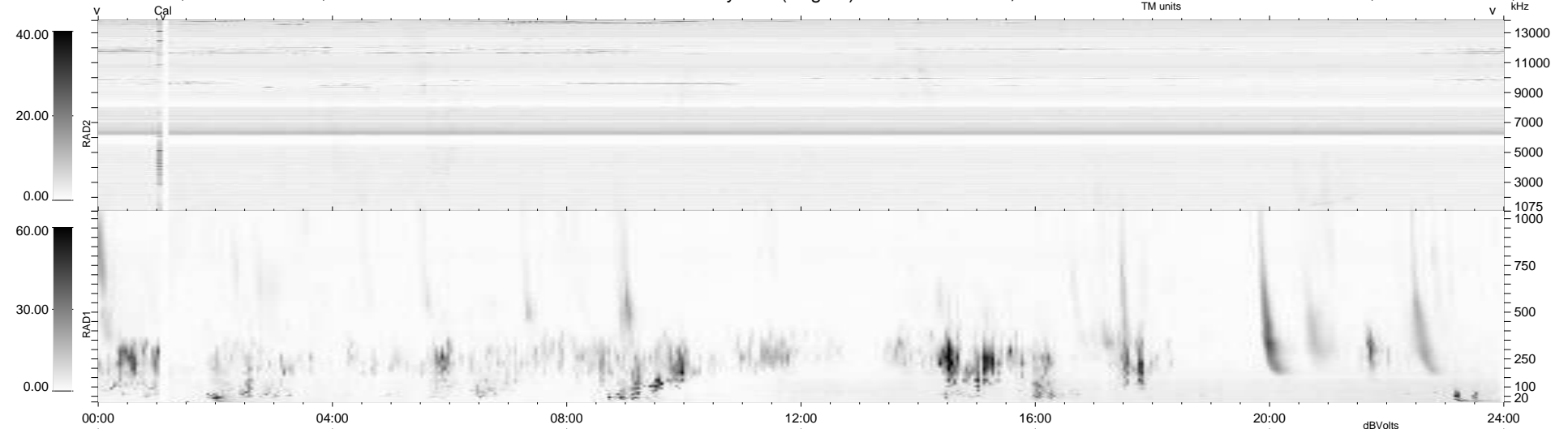
6 bad + 933 good MF/939MF projected (99%) - 0 missing MFs  
 Avg interval = 180 secs  
 Re = -260.69 (255.41, -50.39, 13.63 GSE)

windlib 2.0b

LZ version =

### WIND/WAVES Summary Plot (Page 1) for 29-MAR-2017, DOY = 88

DAILY 2017-04-04 15:10:45  
 Re = 260.49 (254.63, -53.22, 13.60 GSE)



```

RAD2
Antenna Ey .....
Mode LIN(1) .....
SUM/SEP SEP .....
Toggle OFF .....

RAD1
Antenna Ex .....
Mode LIS(2,4) .....
SUM/SEP SUM .....
Toggle OFF .....

TNR
Antenna ExEy .....
Mode A-32 .....
Sweep ACE .....
  
```