

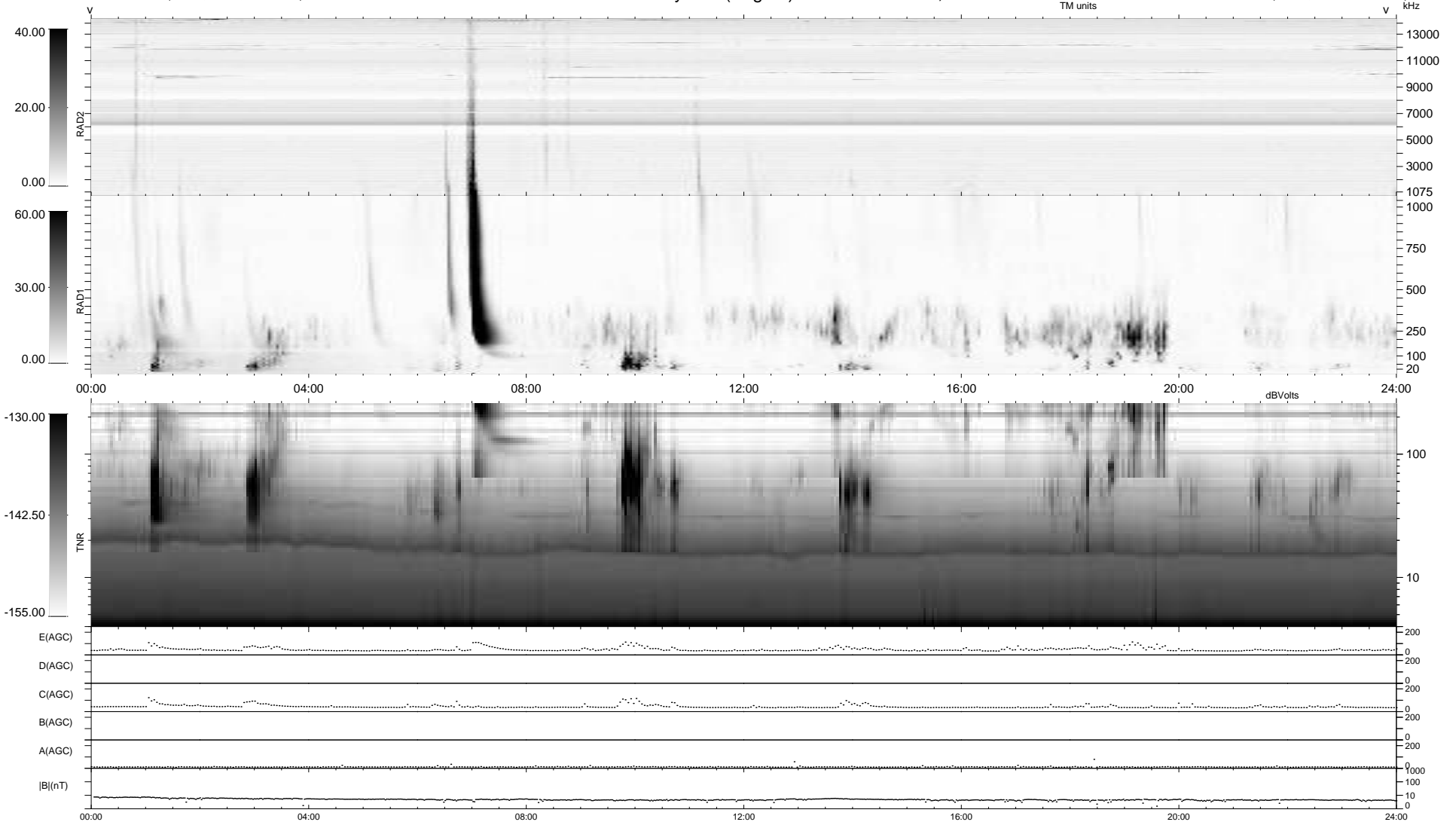
7 bad + 932 good MF/939MF projected (99%) - 0 missing MFs
 Avg interval = 180 secs
 Re = 260.84 (256.12, -47.49, 13.65 GSE)

windlib 2.0b

LZ version =

WIND/WAVES Summary Plot (Page 1) for 28-MAR-2017, DOY = 87

DAILY 2017-03-30 14:24:58
 Re = 260.69 (255.42, -50.37, 13.63 GSE)



```

RAD2
Antenna Ey .....
Mode LIN(1) .....
SUM/SEP SEP .....
Toggle OFF .....

RAD1
Antenna Ex .....
Mode LIS(2,4) .....
SUM/SEP SUM .....
Toggle OFF .....

TNR
Antenna ExEy .....
Mode A-32 .....
Sweep ACE .....
  
```