

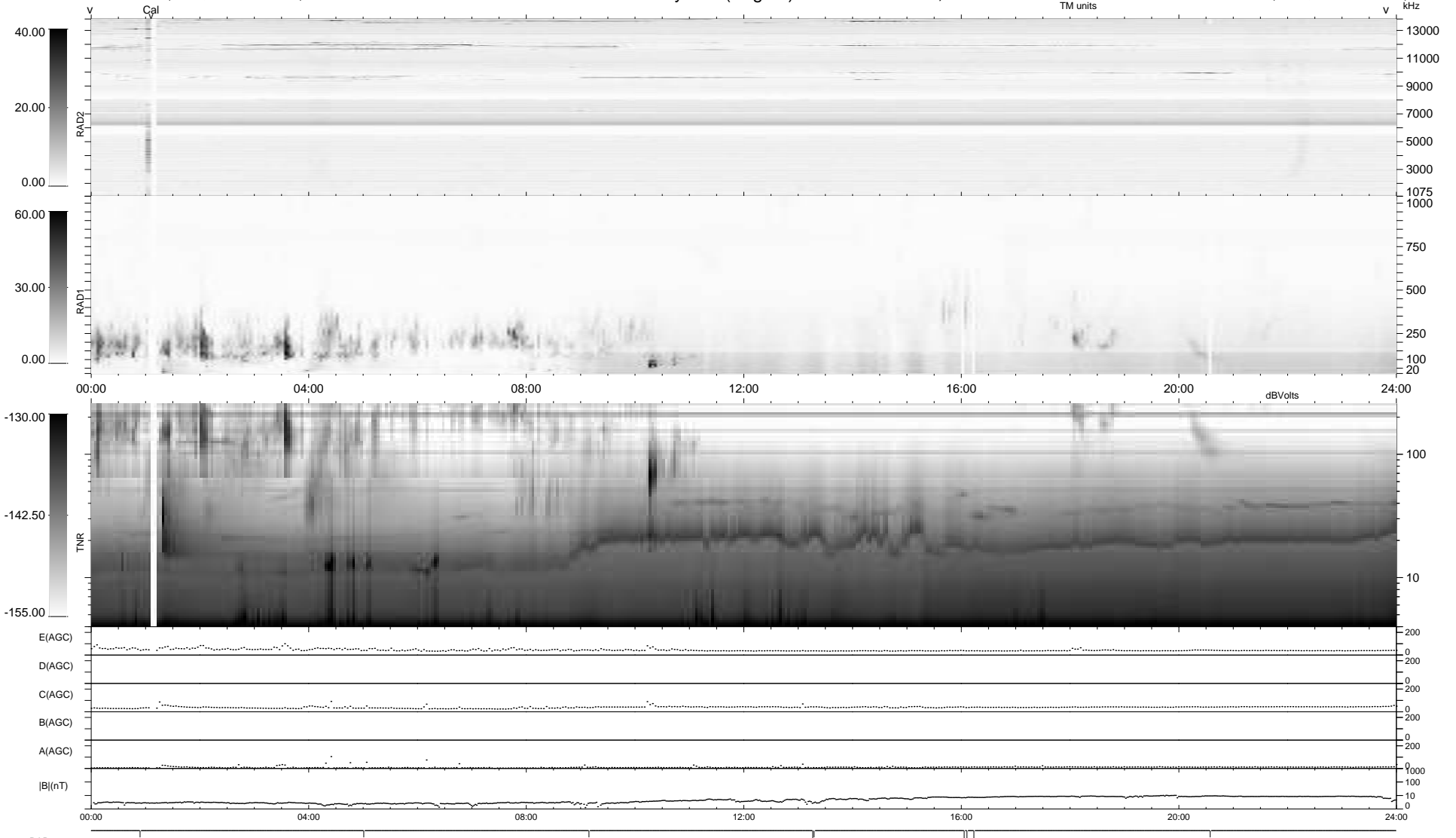
9 bad + 930 good MF/939MF projected (99%) - 0 missing MFs
 Avg interval = 180 secs
 Re = 260.82 (258.49, -32.04, 13.56 GSE)

windlib 2.0b

LZ version =

WIND/WAVES Summary Plot (Page 1) for 23-MAR-2017, DOY = 82

DAILY 2017-03-30 09:49:07
 Re = 260.92 (258.17, -35.24, 13.60 GSE)



```

RAD2
Antenna Ey .....
Mode LIN(1) .....
SUM/SEP SEP .....
Toggle OFF .....

RAD1
Antenna Ex .....
Mode LIS(2,4) .....
SUM/SEP SUM .....
Toggle OFF .....

TNR
Antenna ExEy .....
Mode A-32 .....
Sweep ACE .....
  
```