

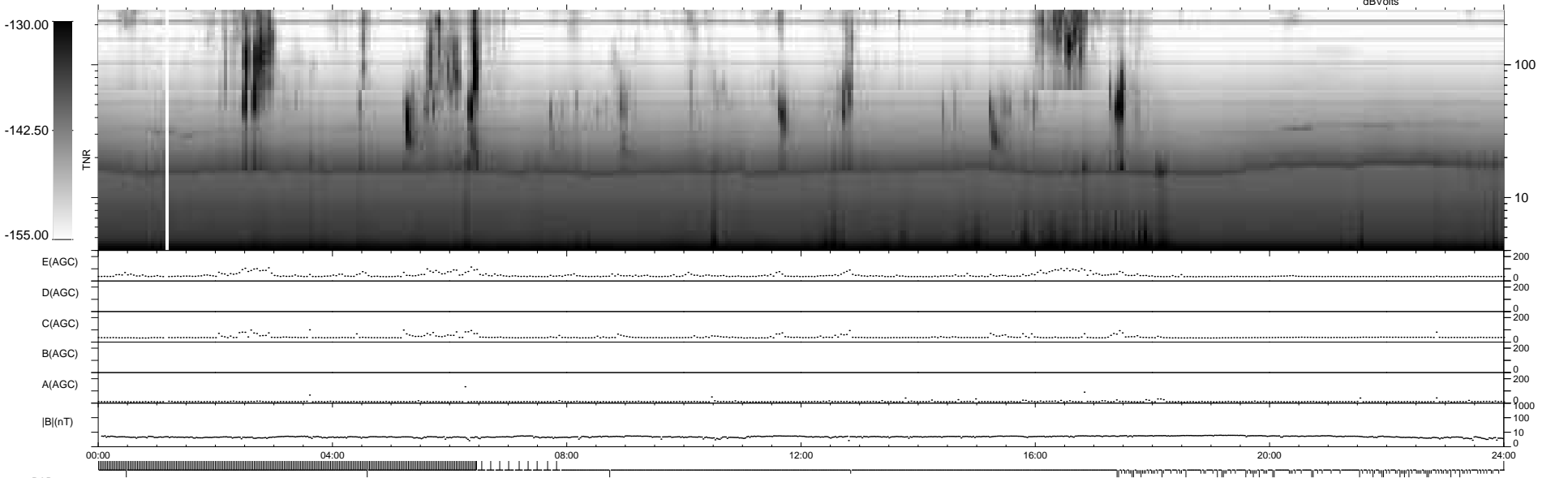
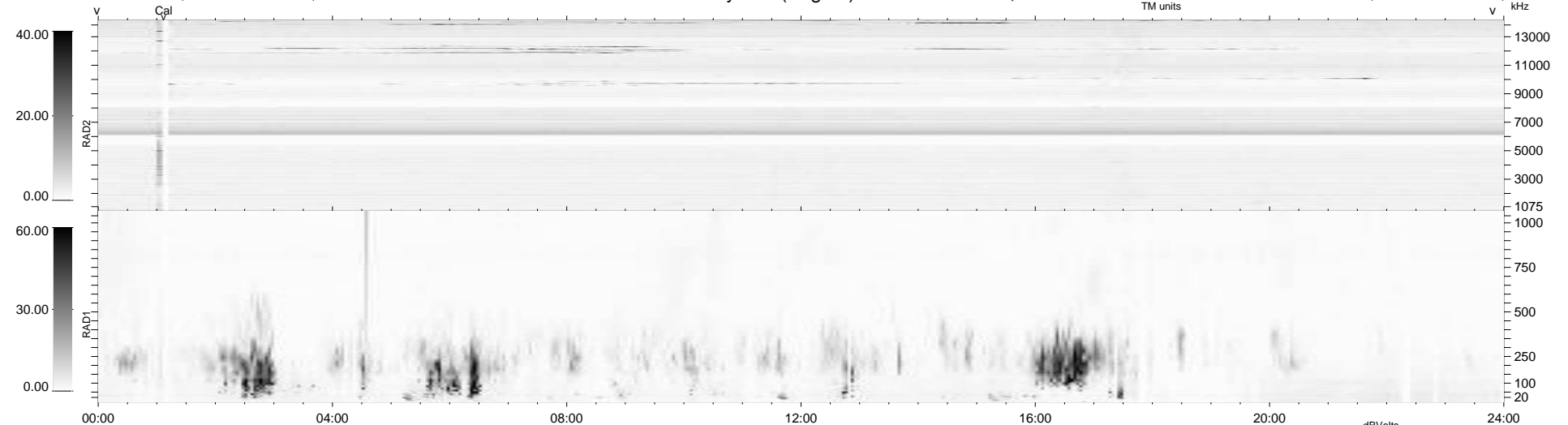
118 bad + 811 good MF/1193MF projected (67%) - 264 missing MFs
 Avg interval = 180 secs
 Re = 259.27 (256.30, 37.93, 9.70 GSE)

windlib 2.0b

LZ version =

WIND/WAVES Summary Plot (Page 1) for 03-MAR-2017, DOY = 62

DAILY 2017-03-17 16:38:11
 Re = 259.31 (256.78, 34.74, 9.99 GSE)



RAD2
 Antenna Ey
 Mode LIN(1)
 SUM/SEP SEP
 Toggle OFF
 RAD1
 Antenna Ex
 Mode LIS(2,4)
 SUM/SEP SUM
 Toggle OFF
 TNR
 Antenna ExEy
 Mode A-32
 Sweep ACE