

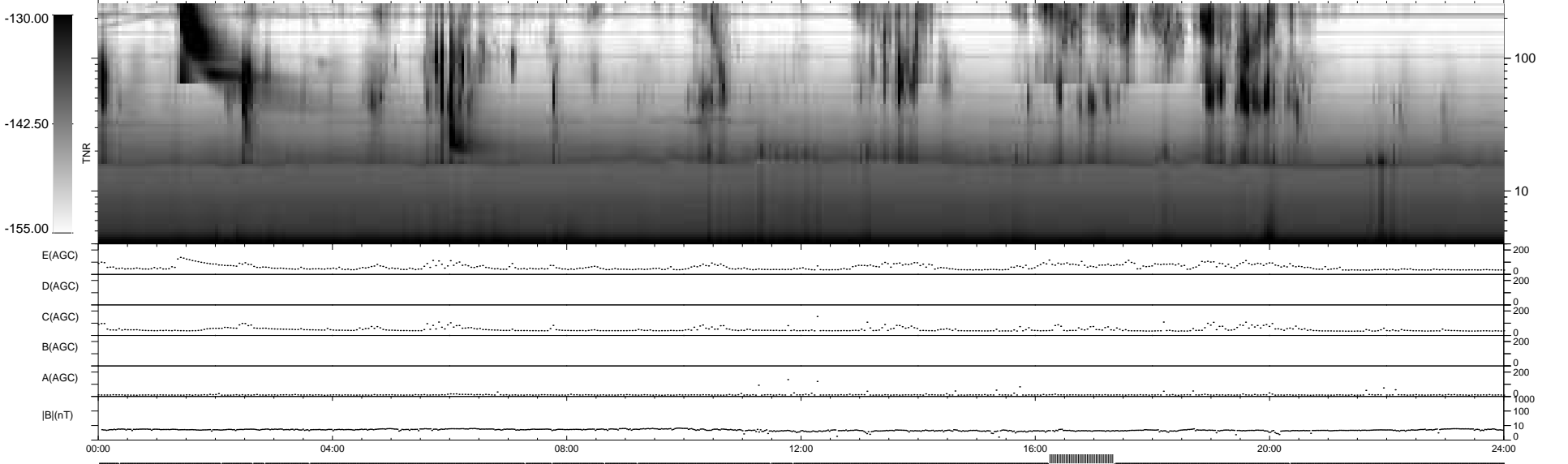
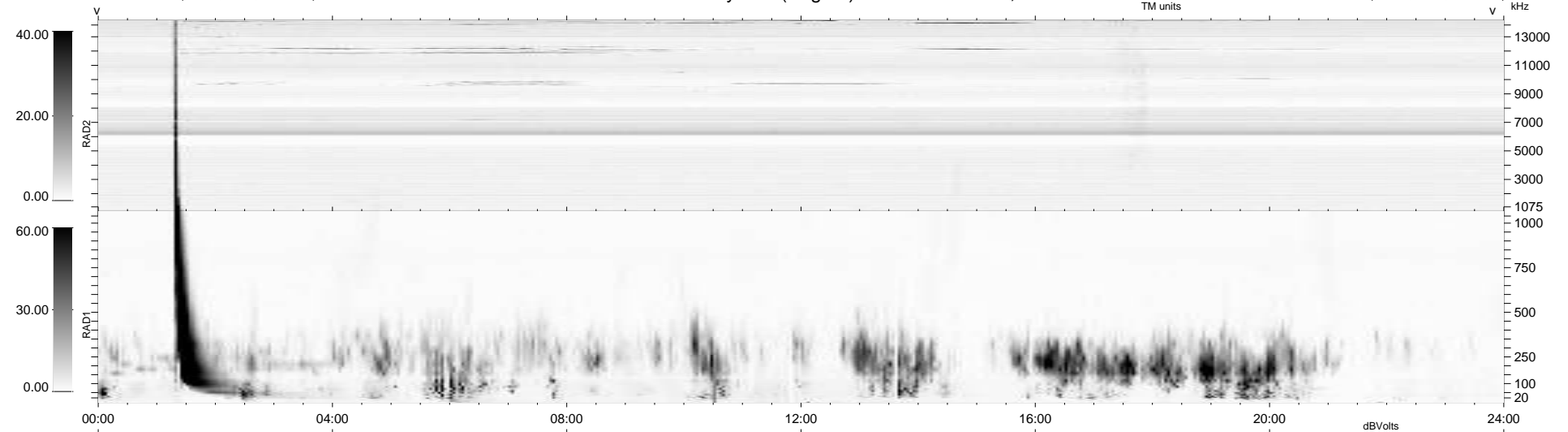
14 bad + 882 good MF/939MF projected (93%) - 43 missing MFs
 Avg interval = 180 secs
 Re = -259.20 (255.76, 41.06, 9.40 GSE)

windlib 2.0b

LZ version =

WIND/WAVES Summary Plot (Page 1) for 02-MAR-2017, DOY = 61

DAILY 2017-03-17 16:37:53
 Re = 259.27 (256.30, 37.95, 9.70 GSE)



RAD2
 Antenna Ey
 Mode LIN(1)
 SUM/SEP SEP
 Toggle OFF
 RAD1
 Antenna Ex
 Mode LIS(2,4)
 SUM/SEP SUM
 Toggle OFF
 TNR
 Antenna ExEy
 Mode A-32
 Sweep ACE