

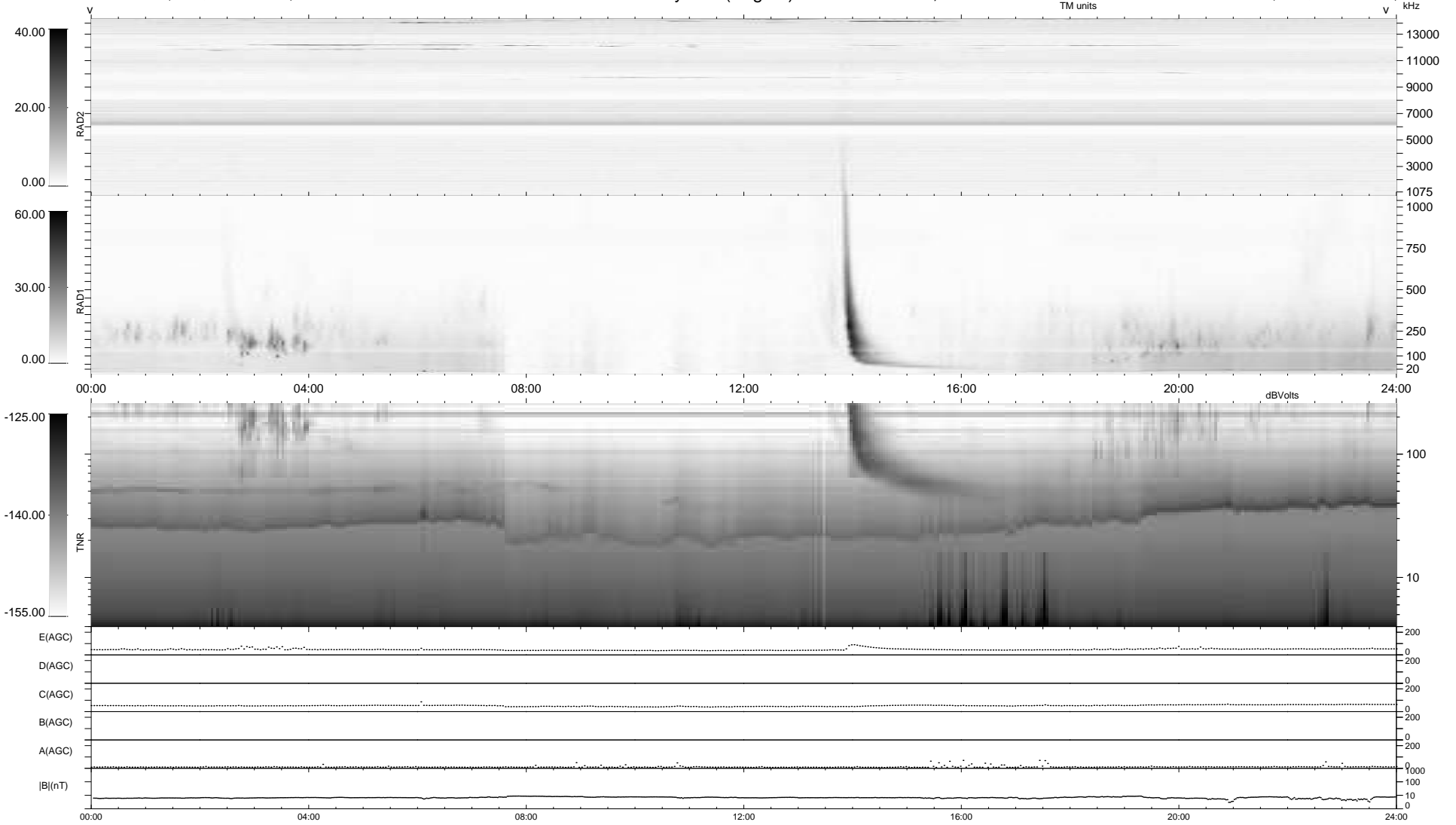
6 bad + 933 good MF/939MF projected (99%) - 0 missing MFs  
 Avg interval = 180 secs  
 Re = -258.91 (254.44, 47.11, 8.79 GSE)

windlib 2.0b

LZ version =

### WIND/WAVES Summary Plot (Page 1) for 28-FEB-2017, DOY = 59

DAILY 2017-03-17 16:36:42  
 Re = 259.08 (255.13, 44.15, 9.10 GSE)



```

RAD2
Antenna Ey .....
Mode LIN(1) .....
SUM/SEP SEP .....
Toggle OFF .....

RAD1
Antenna Ex .....
Mode LIS(2,4) .....
SUM/SEP SUM .....
Toggle OFF .....

TNR
Antenna ExEy .....
Mode A-32 .....
Sweep ACE .....
  
```