

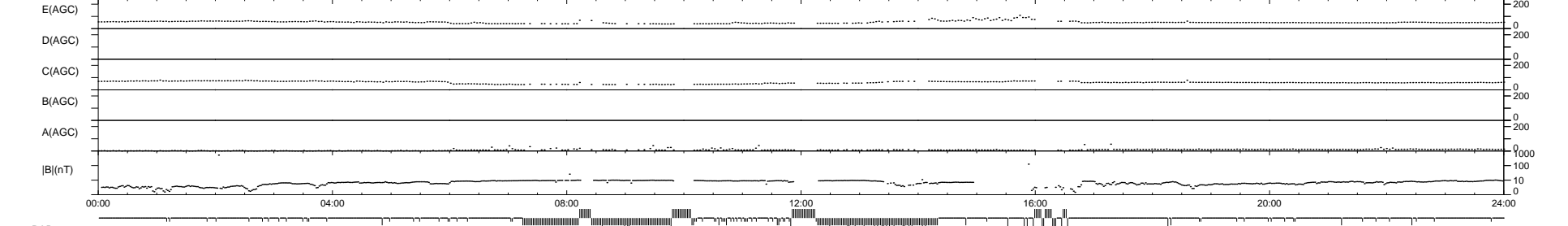
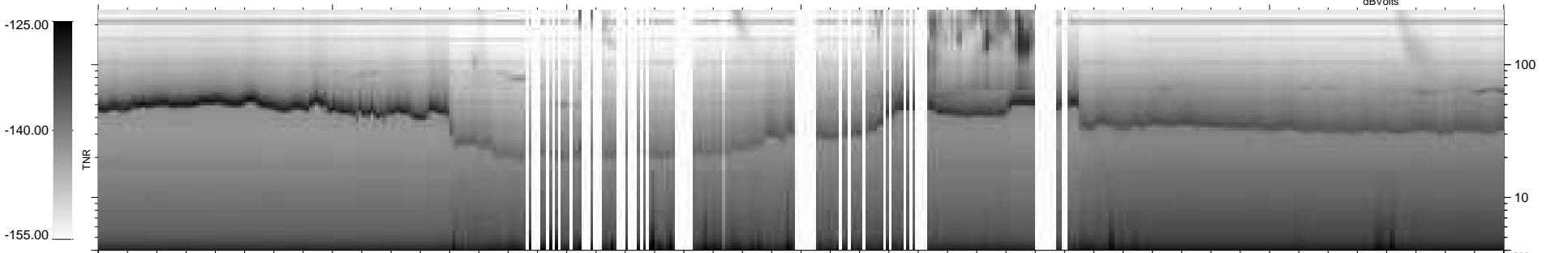
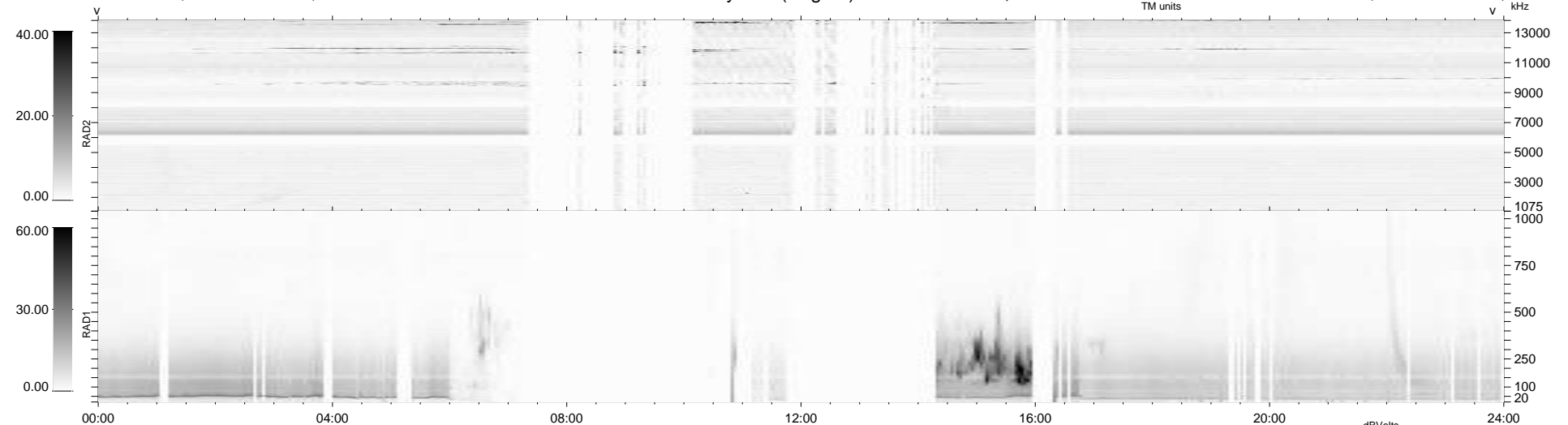
260 bad + 629 good MF/939MF projected (66%) - 50 missing MFs
Avg interval = 180 secs
Re = -253.55 (241.11, 78.32, 4.42 GSE)

windlib 2.0b

LZ version =

WIND/WAVES Summary Plot (Page 1) for 16-FEB-2017, DOY = 47

DAILY 2017-03-17 16:29:31
Re = 254.12 (242.42, 76.06, 4.83 GSE)



RAD2
Antenna Ey
Mode LIN(1)
SUM/SEP SEP
Toggle OFF

RAD1
Antenna Ex
Mode LIS(2,4)
SUM/SEP SUM
Toggle OFF

TNR
Antenna ExEy
Mode A-32
Sweep ACE