

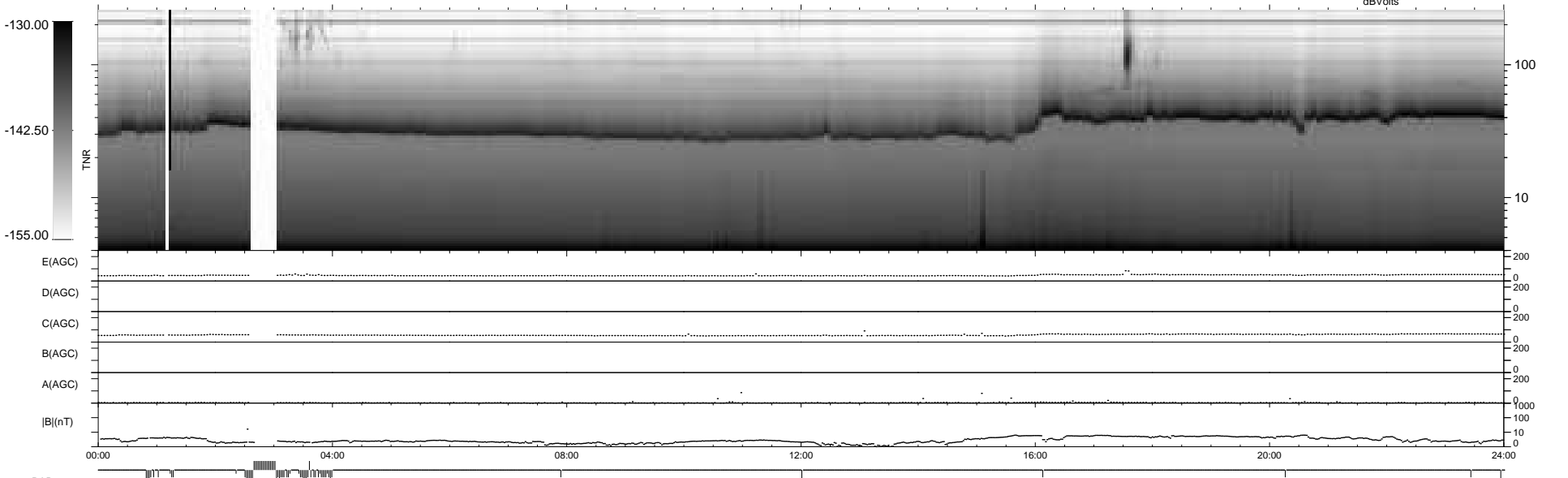
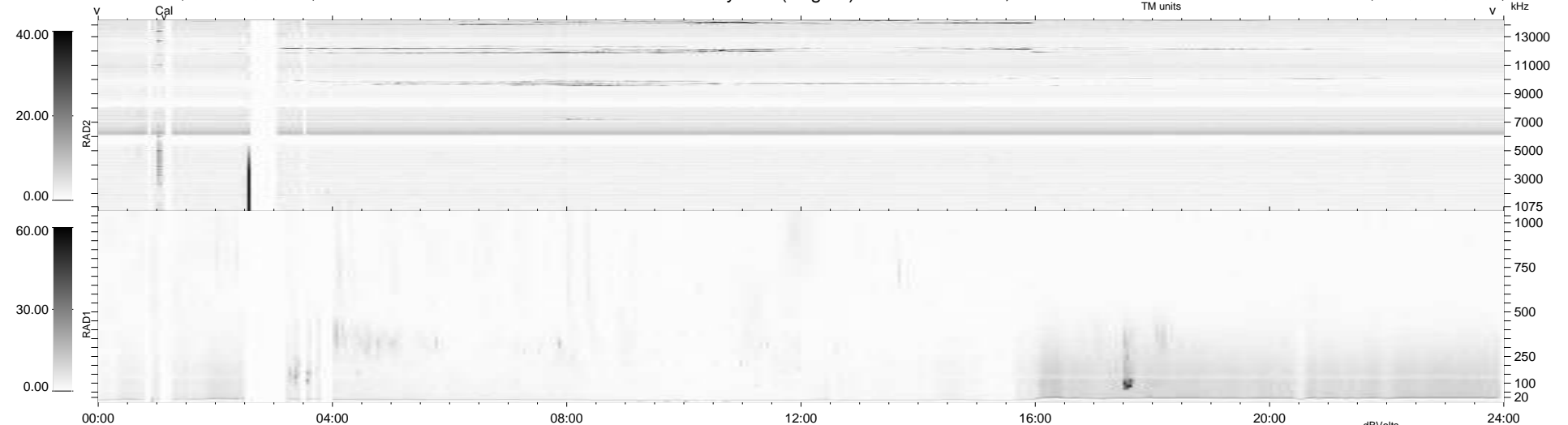
51 bad + 873 good MF/940MF projected (92%) - 16 missing MFs
 Avg interval = 180 secs
 Re = 251.82 (237.13, 84.70, 3.14 GSE)

windlib 2.0b

LZ version =

WIND/WAVES Summary Plot (Page 1) for 13-FEB-2017, DOY = 44

DAILY 2017-03-17 16:26:43
 Re = 252.39 (238.44, 82.67, 3.57 GSE)



RAD2
 Antenna Ey
 Mode LIN(1)
 SUM/SEP SEP
 Toggle OFF

RAD1
 Antenna Ex
 Mode LIS(2,4)
 SUM/SEP SUM
 Toggle OFF

TNR
 Antenna ExEy
 Mode A-32
 Sweep ACE