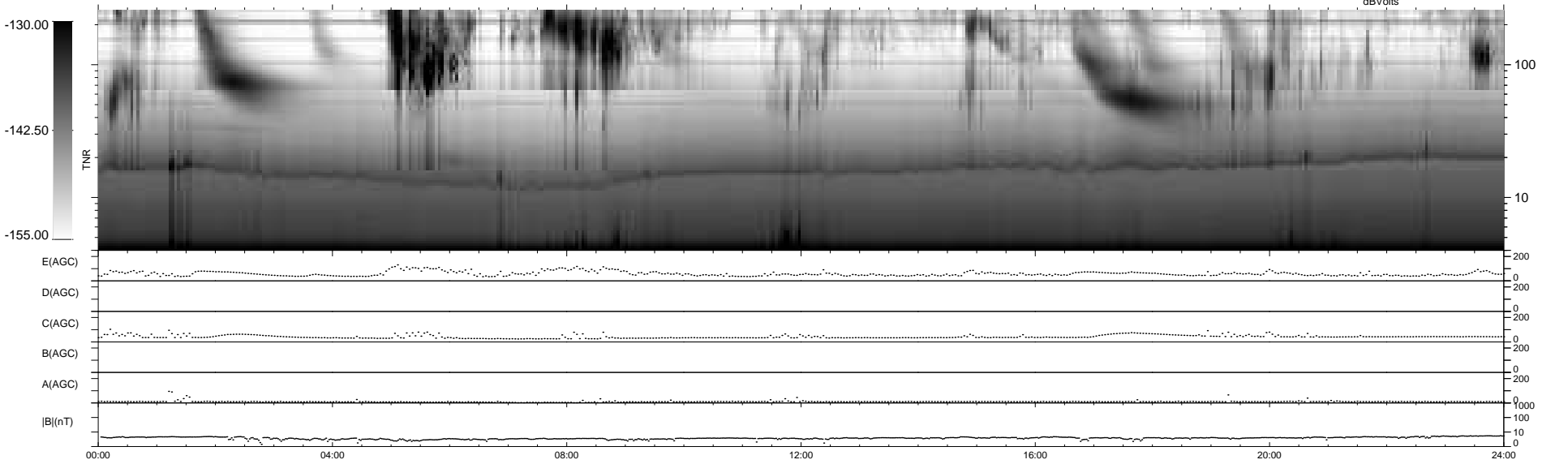
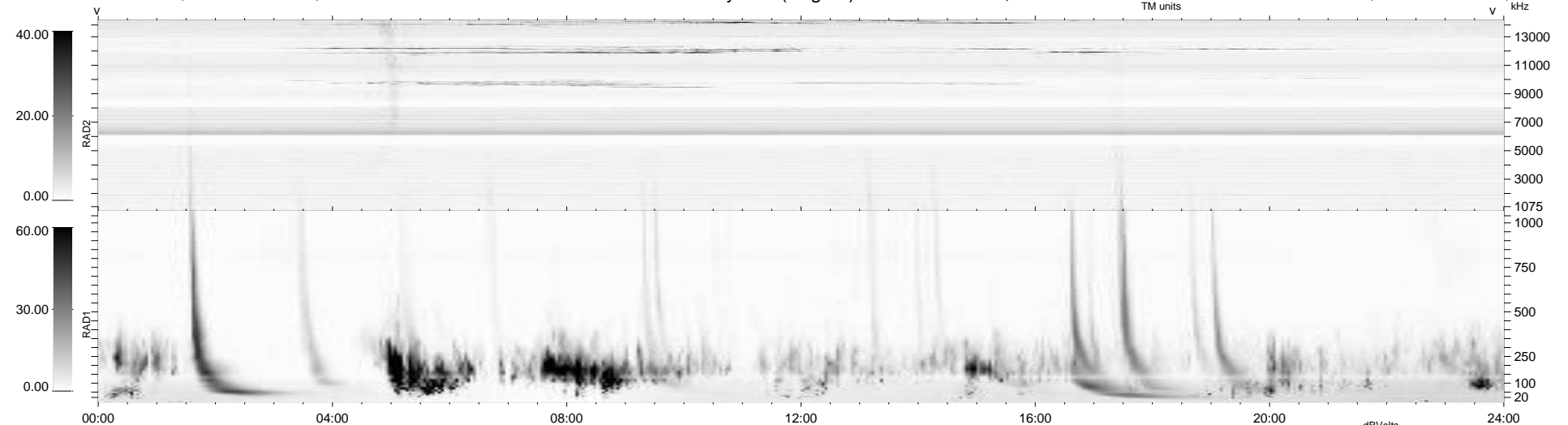


7 bad + 932 good MF/939MF projected (99%) - 0 missing MFs
 Avg interval = 180 secs
 Re = 246.44 (226.15, 97.93, -0.79 GSE)

windlib 2.0b LZ version =
 DAILY 2017-03-17 16:22:05
 Re = 247.13 (227.29, 97.03, -0.36 GSE)

WIND/WAVES Summary Plot (Page 1) for 04-FEB-2017, DOY = 35



RAD2
 Antenna Ey
 Mode LIN(1)
 SUM/SEP SEP
 Toggle OFF

RAD1
 Antenna Ex
 Mode LIS(2,4)
 SUM/SEP SUM
 Toggle OFF

TNR
 Antenna ExEy
 Mode A-32
 Sweep ACE