

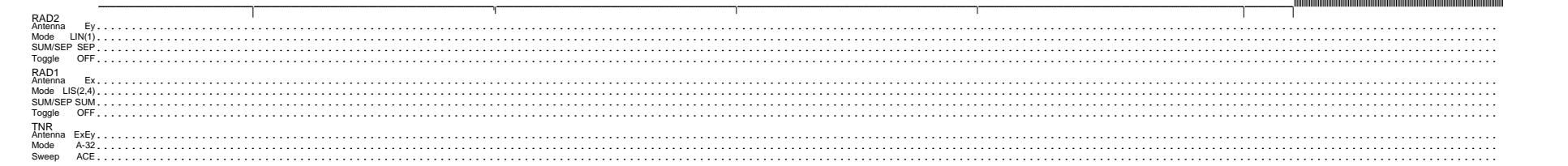
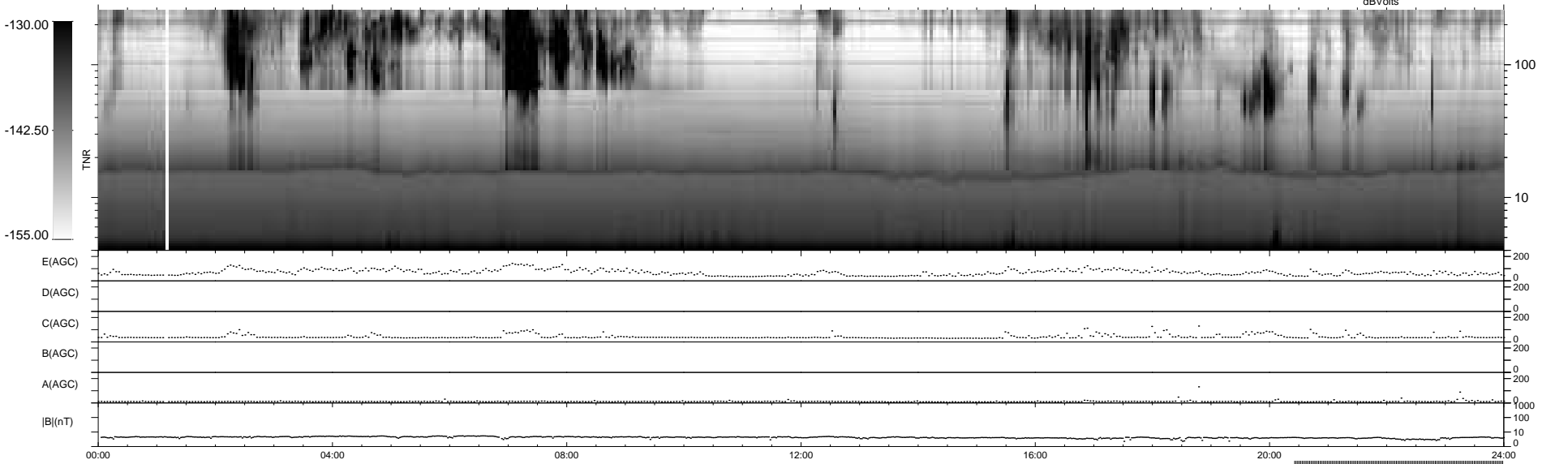
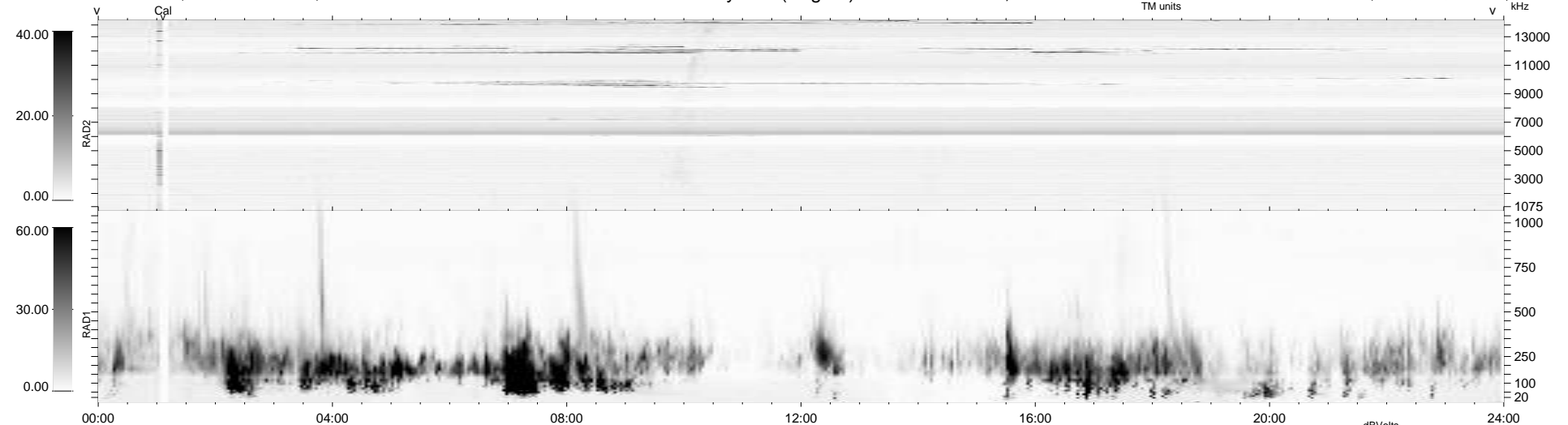
7 bad + 792 good MF/939MF projected (84%) - 140 missing MFs  
 Avg interval = 180 secs  
 Re = -245.70 (225.01, 98.69, -1.21 GSE)

windlib 2.0b

LZ version =

### WIND/WAVES Summary Plot (Page 1) for 03-FEB-2017, DOY = 34

DAILY 2017-03-17 16:20:59  
 Re = 246.44 (226.14, 97.94, -0.79 GSE)



```

RAD2
Antenna Ey .....
Mode LIN(1) .....
SUM/SEP SEP .....
Toggle OFF .....

RAD1
Antenna Ex .....
Mode LIS(2,4) .....
SUM/SEP SUM .....
Toggle OFF .....

TNR
Antenna ExEy .....
Mode A-32 .....
Sweep ACE .....
  
```