

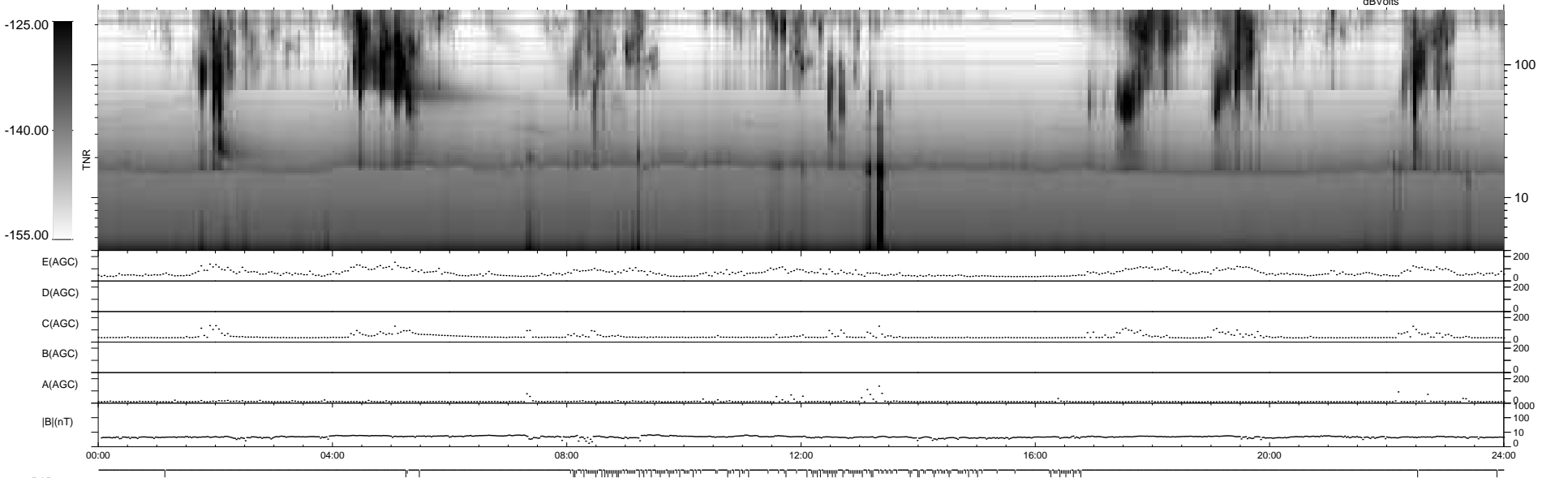
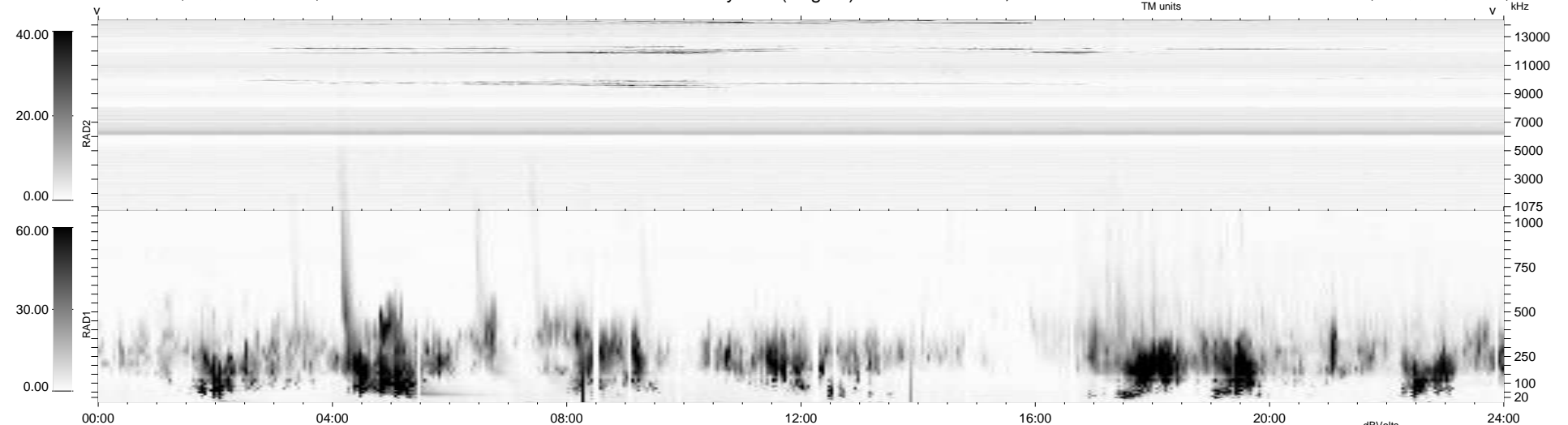
169 bad + 770 good MF/939MF projected (82%) - 0 missing MFs
 Avg interval = 180 secs
 Re = -244.91 (223.87, 99.29, -1.63 GSE)

windlib 2.0b

LZ version =

WIND/WAVES Summary Plot (Page 1) for 02-FEB-2017, DOY = 33

DAILY 2017-03-17 16:19:02
 Re = 245.70 (225.00, 98.69, -1.21 GSE)



```

RAD2
Antenna Ey .....
Mode LIN(1) .....
SUM/SEP SEP .....
Toggle OFF .....

RAD1
Antenna Ex .....
Mode LIS(2,4) .....
SUM/SEP SUM .....
Toggle OFF .....

TNR
Antenna ExEy .....
Mode A-32 .....
Sweep ACE .....
  
```