

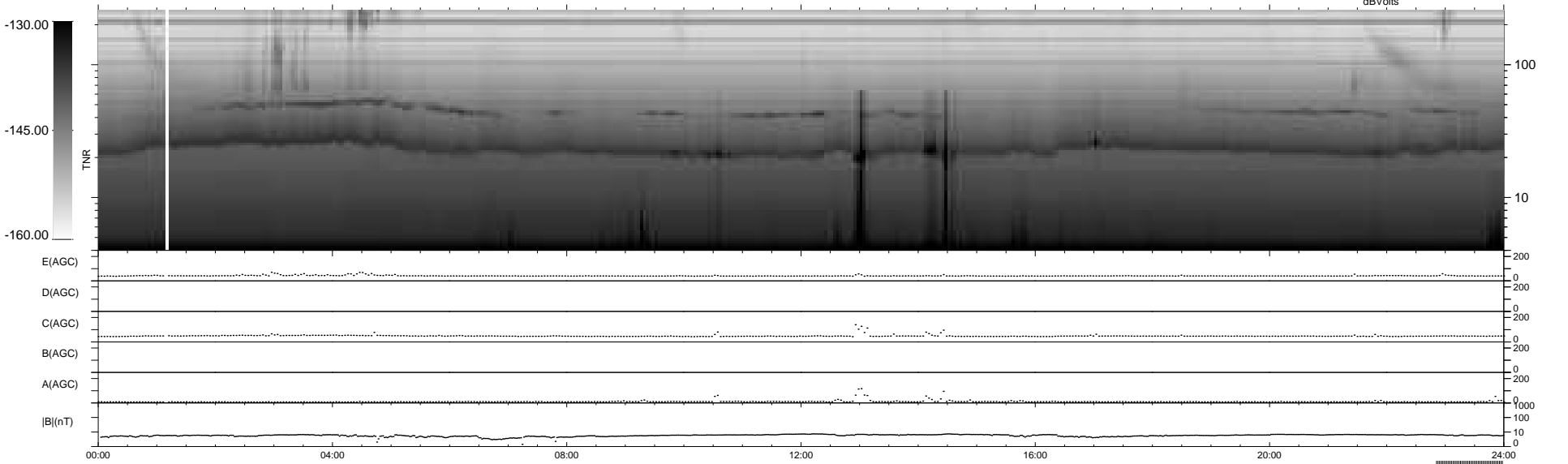
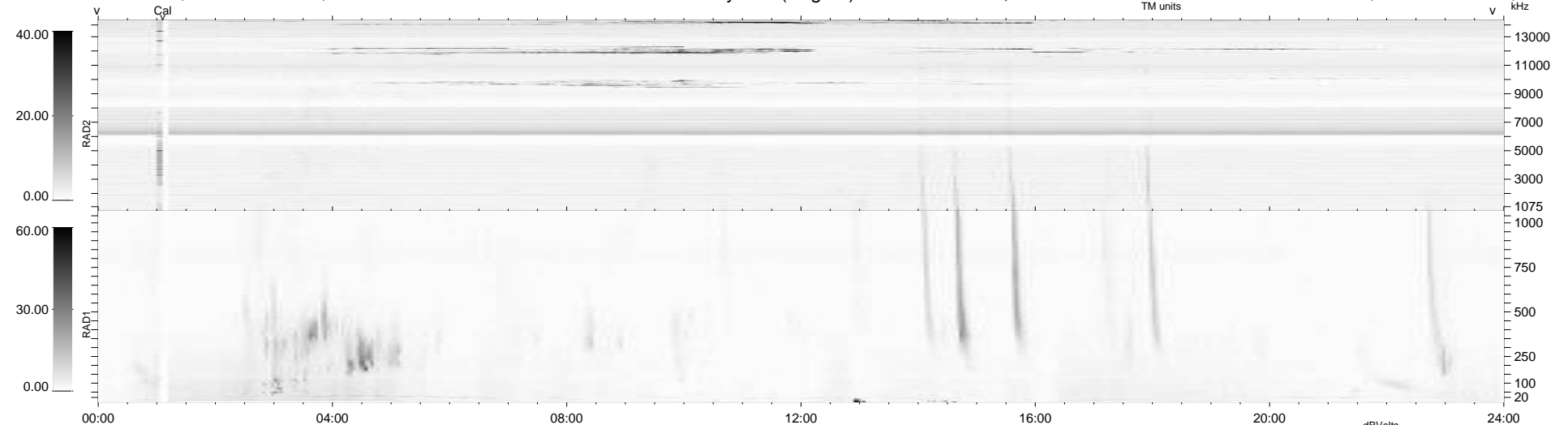
7 bad + 887 good MF/939MF projected (94%) - 45 missing MFs  
 Avg interval = 180 secs  
 Re = 239.92 (218.02, 100.06, -3.66 GSE)

windlib 2.0b

LZ version =

### WIND/WAVES Summary Plot (Page 1) for 28-JAN-2017, DOY = 28

DAILY 2017-03-17 16:15:39  
 Re = 241.04 (219.21, 100.19, -3.27 GSE)



RAD2  
 Antenna Ey .....  
 Mode LIN(1) .....  
 SUM/SEP SEP .....  
 Toggle OFF .....  
 RAD1  
 Antenna Ex .....  
 Mode LIS(2,4) .....  
 SUM/SEP SUM .....  
 Toggle OFF .....  
 TNR  
 Antenna ExEy .....  
 Mode A-32 .....  
 Sweep ACE .....