

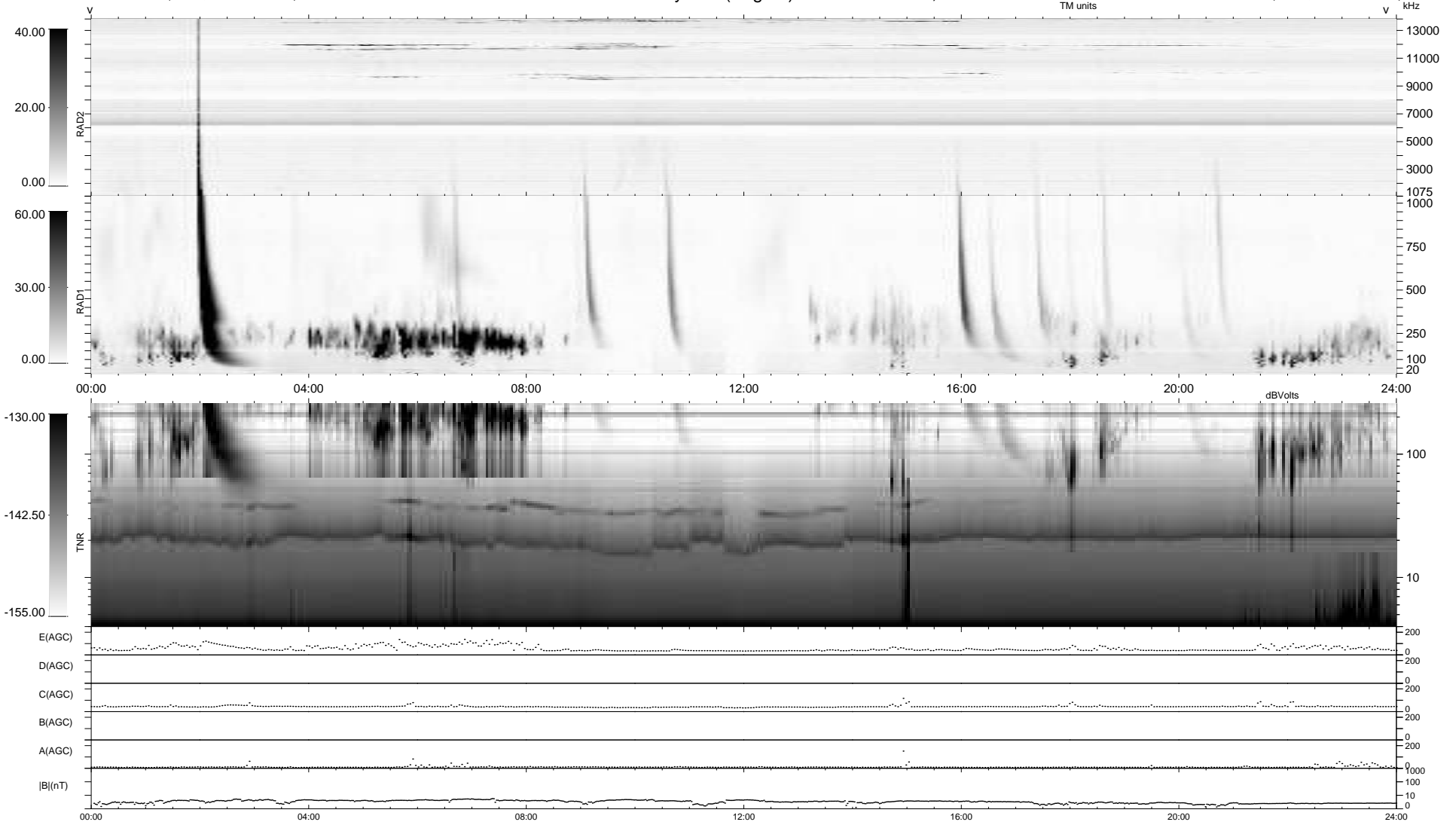
8 bad + 931 good MF/939MF projected (99%) - 0 missing MFs
 Avg interval = 180 secs
 Re = -216.57 (200.45, 81.41, -9.69 GSE)

windlib 2.0b

LZ version =

WIND/WAVES Summary Plot (Page 1) for 11-JAN-2017, DOY = 11

DAILY 2017-03-17 15:57:38
 Re = 217.86 (201.07, 83.34, -9.41 GSE)



```

RAD2
Antenna Ey .....
Mode LIN(1) .....
SUM/SEP SEP .....
Toggle OFF .....

RAD1
Antenna Ex .....
Mode LIS(2,4) .....
SUM/SEP SUM .....
Toggle OFF .....

TNR
Antenna ExEy .....
Mode A-32 .....
Sweep ACE .....
  
```