

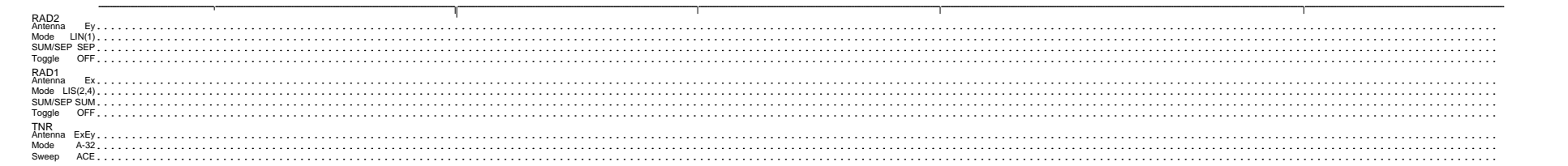
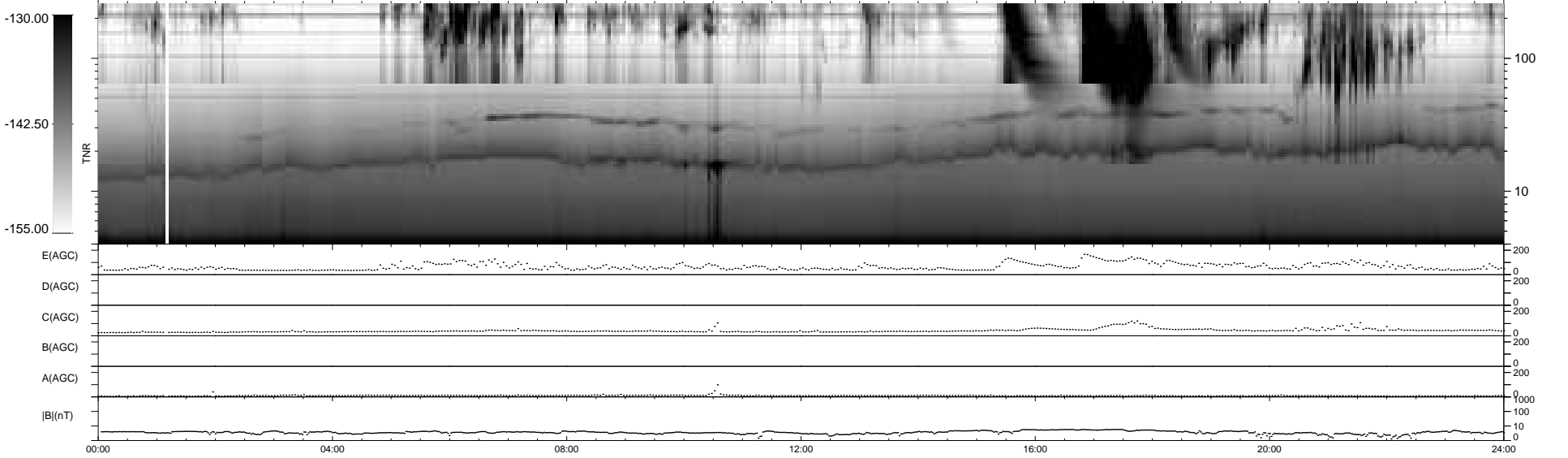
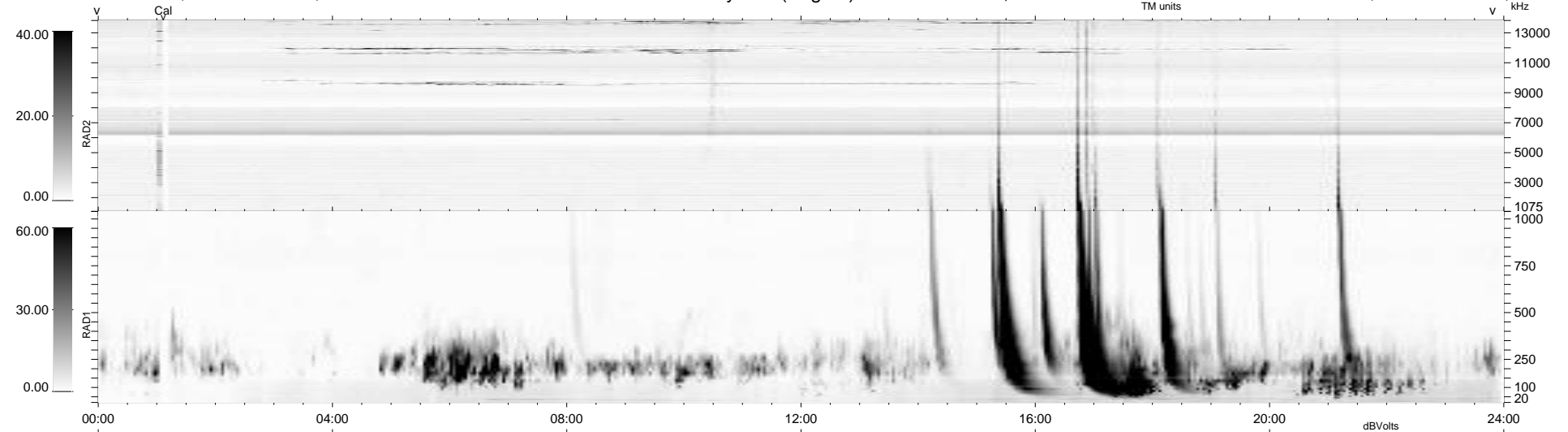
6 bad + 933 good MF/939MF projected (99%) - 0 missing MFs  
 Avg interval = 180 secs  
 Re = 215.30 (199.90, 79.35, -9.94 GSE)

windlib 2.0b

LZ version =

### WIND/WAVES Summary Plot (Page 1) for 10-JAN-2017, DOY = 10

DAILY 2017-03-17 15:56:28  
 Re = 216.56 (200.44, 81.40, -9.69 GSE)



```

RAD2
Antenna Ey .....
Mode LIN(1) .....
SUM/SEP SEP .....
Toggle OFF .....

RAD1
Antenna Ex .....
Mode LIS(2,4) .....
SUM/SEP SUM .....
Toggle OFF .....

TNR
Antenna ExEy .....
Mode A-32 .....
Sweep ACE .....
  
```