

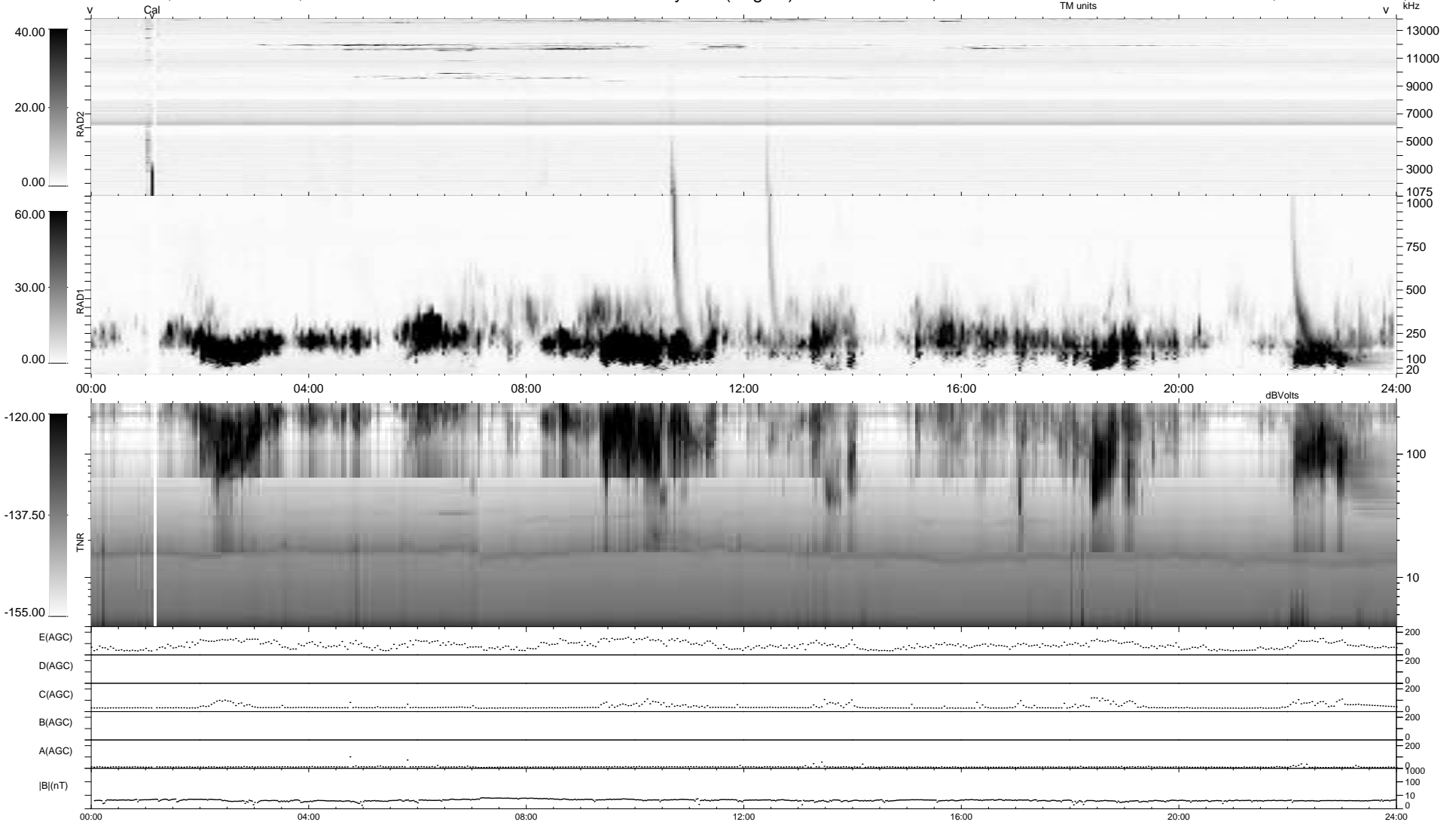
5 bad + 934 good MF/939MF projected (99%) - 0 missing MFs
 Avg interval = 180 secs
 Re = 212.84 (198.99, 74.81, -10.40 GSE)

windlib 2.0b

LZ version =

WIND/WAVES Summary Plot (Page 1) for 08-JAN-2017, DOY = 8

DAILY 2017-03-17 15:39:52
 Re = 214.05 (199.41, 77.13, -10.18 GSE)



RAD2
 Antenna Ey
 Mode LIN(1)
 SUM/SEP SEP
 Toggle OFF
 RAD1
 Antenna Ex
 Mode LIS(2,4)
 SUM/SEP SUM
 Toggle OFF
 TNR
 Antenna ExEy
 Mode A-32
 Sweep ACE