

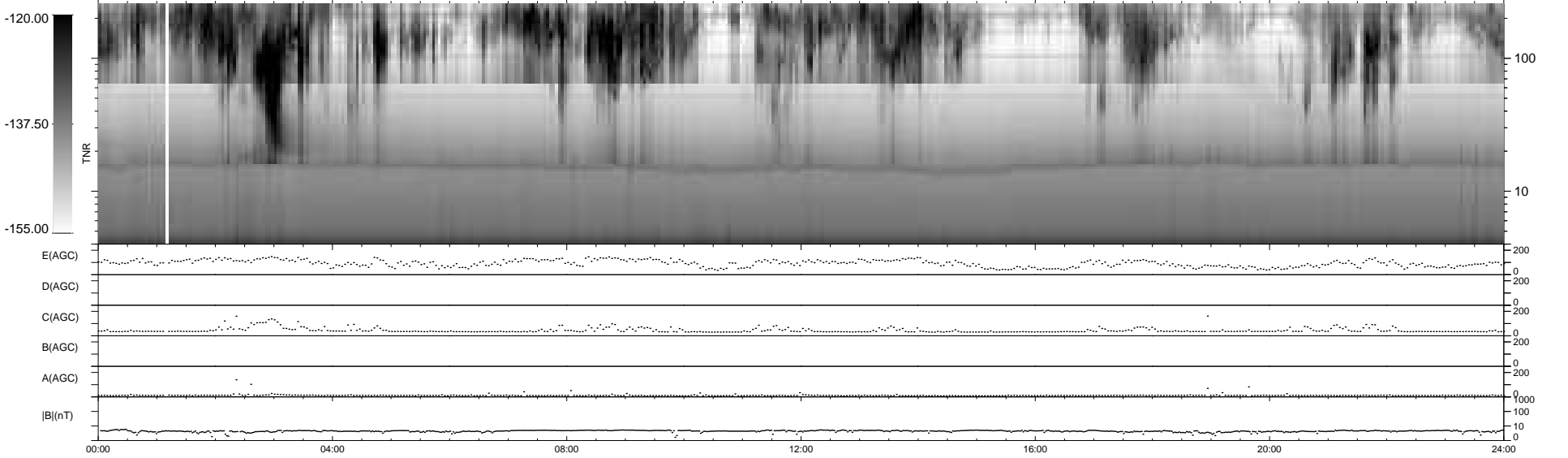
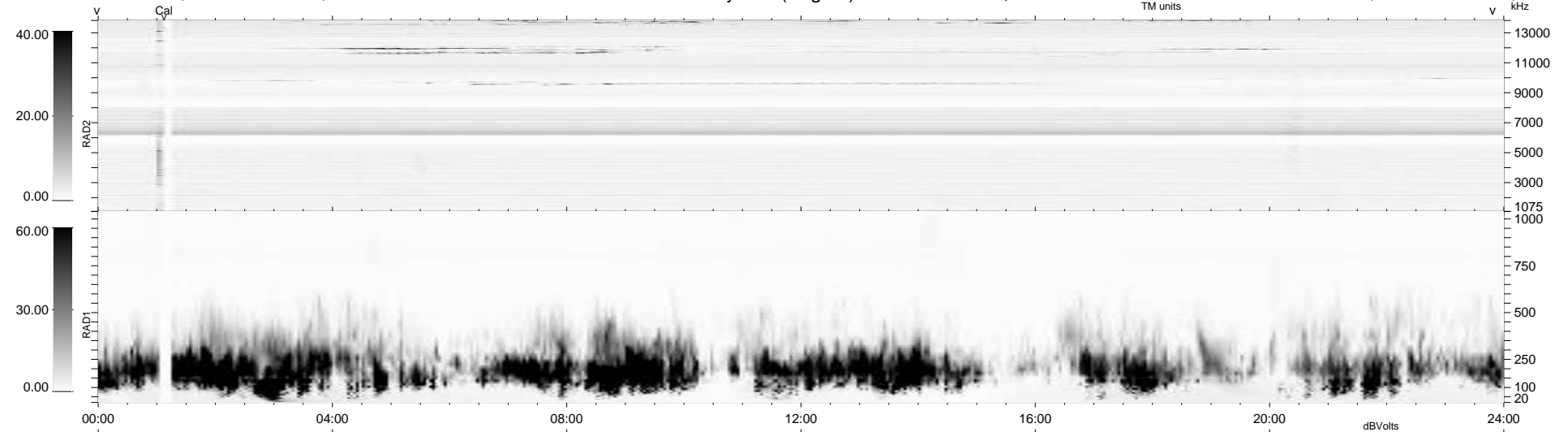
5 bad + 935 good MF/940MF projected (99%) - 0 missing MFs
 Avg interval = 180 secs
 Re = 210.47 (198.30, 69.71, -10.78 GSE)

windlib 2.0b

LZ version =

WIND/WAVES Summary Plot (Page 1) for 06-JAN-2017, DOY = 6

DAILY 2017-03-17 15:36:42
 Re = 211.64 (198.62, 72.31, -10.60 GSE)



```

RAD2
Antenna Ey .....
Mode LIN(1) .....
SUM/SEP SEP .....
Toggle OFF .....

RAD1
Antenna Ex .....
Mode LIS(2,4) .....
SUM/SEP SUM .....
Toggle OFF .....

TNR
Antenna ExEy .....
Mode A-32 .....
Sweep ACE .....
  
```