

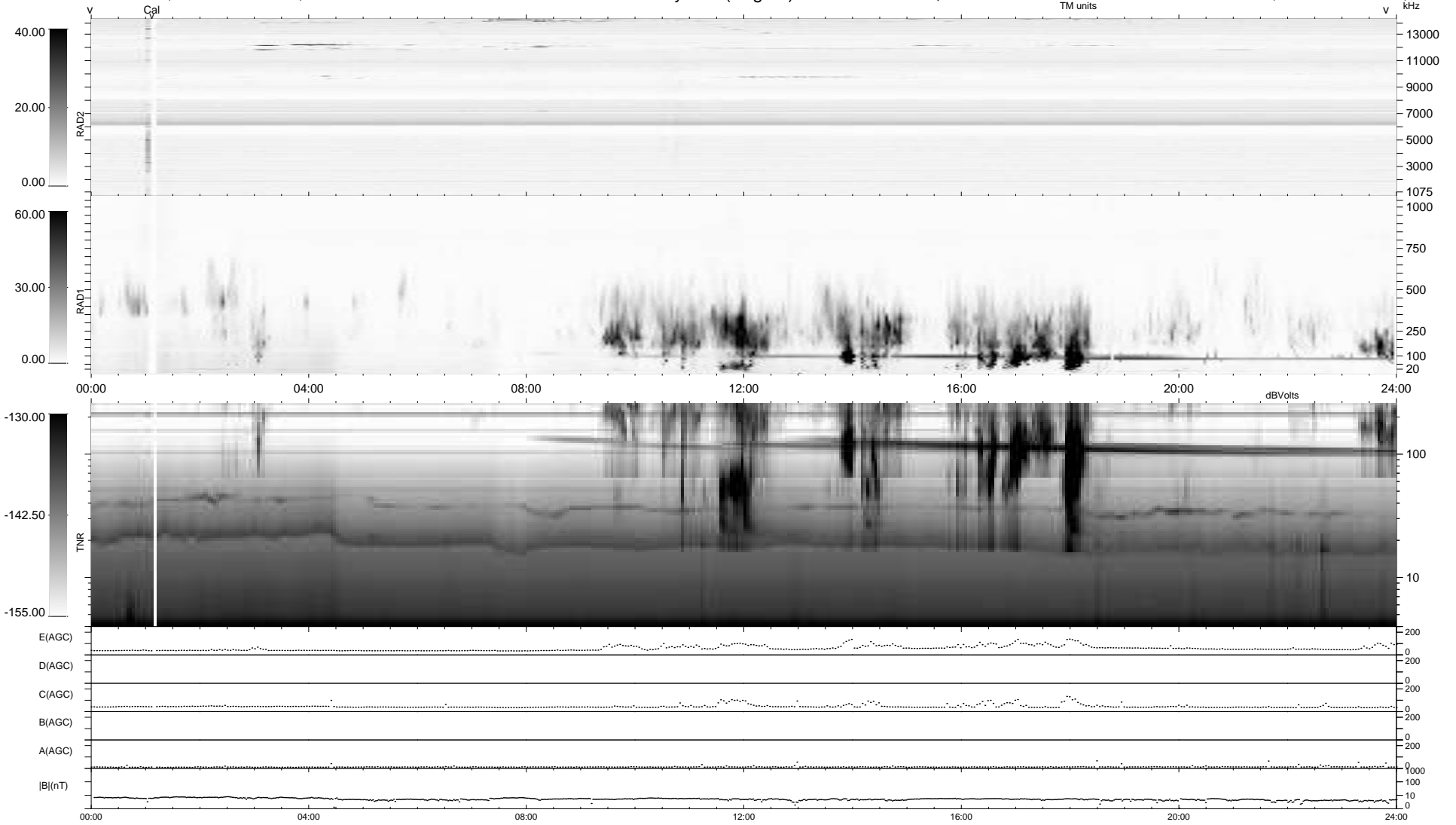
4 bad + 935 good MF/939MF projected (99%) - 0 missing MFs
 Avg interval = 180 secs
 Re = 198.13 (195.55, 29.71, -11.49 GSE)

windlib 2.0b

LZ version =

WIND/WAVES Summary Plot (Page 1) for 25-DEC-2016, DOY = 360

DAILY 2017-03-21 16:55:48
 Re = 198.94 (195.77, 33.42, -11.53 GSE)



RAD2
 Antenna Ey
 Mode LIN(1)
 SUM/SEP SEP
 Toggle OFF
 RAD1
 Antenna Ex
 Mode LIS(2,4)
 SUM/SEP SUM
 Toggle OFF
 TNR
 Antenna ExEy
 Mode A-32
 Sweep ACE