

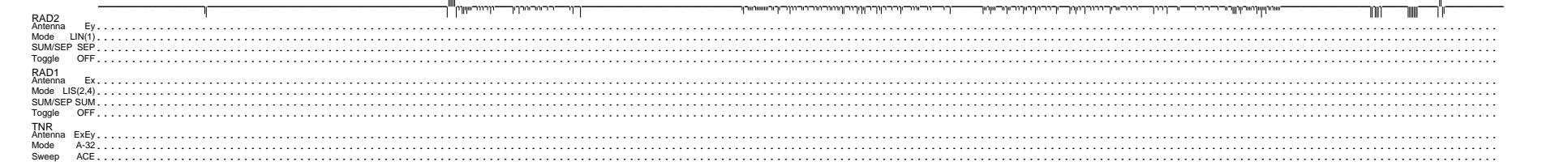
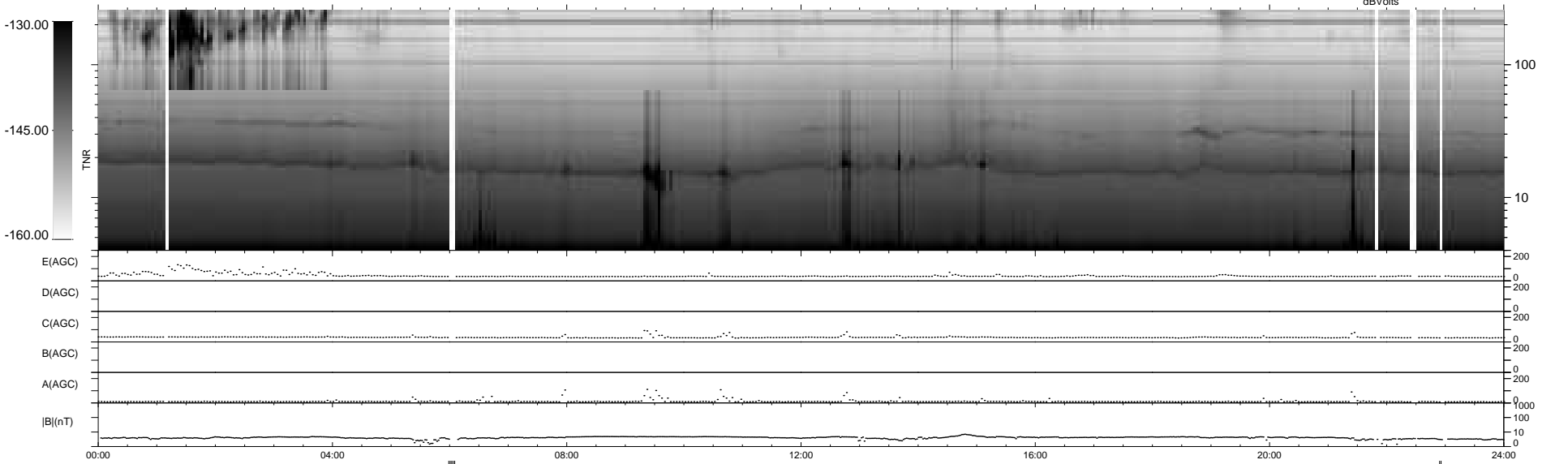
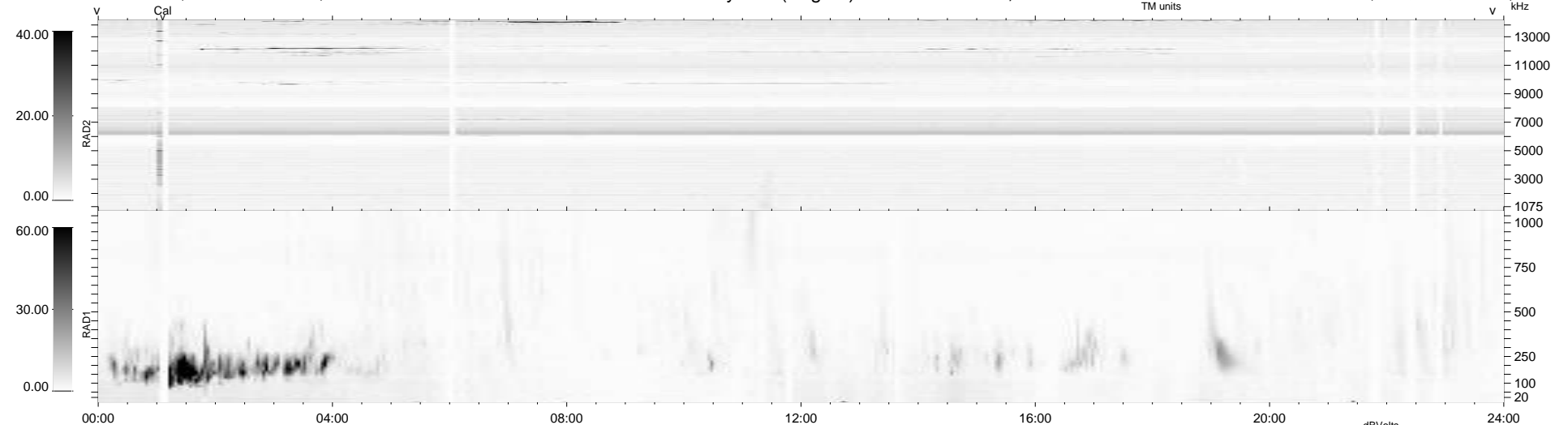
195 bad + 737 good MF/939MF projected (78%) - 7 missing MFs
 Avg interval = 180 secs
 Re = 195.09 (194.26, -15.22, -9.49 GSE)

windlib 2.0b

LZ version =

WIND/WAVES Summary Plot (Page 1) for 13-DEC-2016, DOY = 348

DAILY 2017-03-21 16:49:06
 Re = 194.75 (194.16, -11.60, -9.77 GSE)



RAD2
 Antenna Ey
 Mode LIN(1)
 SUM/SEP SEP
 Toggle OFF

RAD1
 Antenna Ex
 Mode LIS(2,4)
 SUM/SEP SUM
 Toggle OFF

TNR
 Antenna ExEy
 Mode A-32
 Sweep ACE