

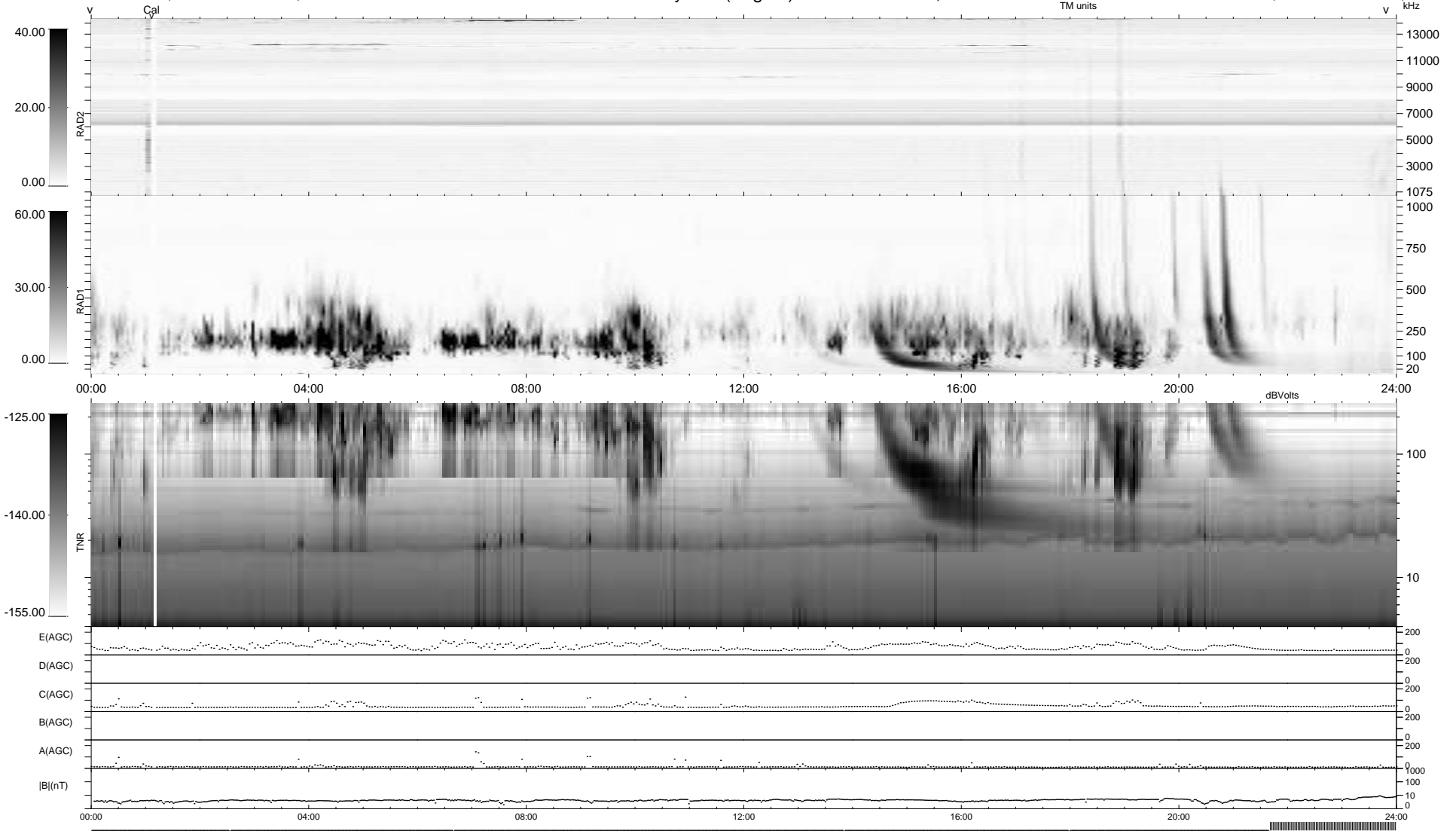
5 bad + 843 good MF/939MF projected (89%) - 91 missing MFs
 Avg interval = 180 secs
 Re = 196.12 (194.63, -22.47, -8.85 GSE)

windlib 2.0b

LZ version =

WIND/WAVES Summary Plot (Page 1) for 11-DEC-2016, DOY = 346

DAILY 2017-03-21 16:48:01
 Re = 195.55 (194.42, -18.88, -9.18 GSE)



RAD2
 Antenna Ey
 Mode LIN(1)
 SUM/SEP SEP
 Toggle OFF
 RAD1
 Antenna Ex
 Mode LIS(2,4)
 SUM/SEP SUM
 Toggle OFF
 TNR
 Antenna ExEy
 Mode A-32
 Sweep ACE