

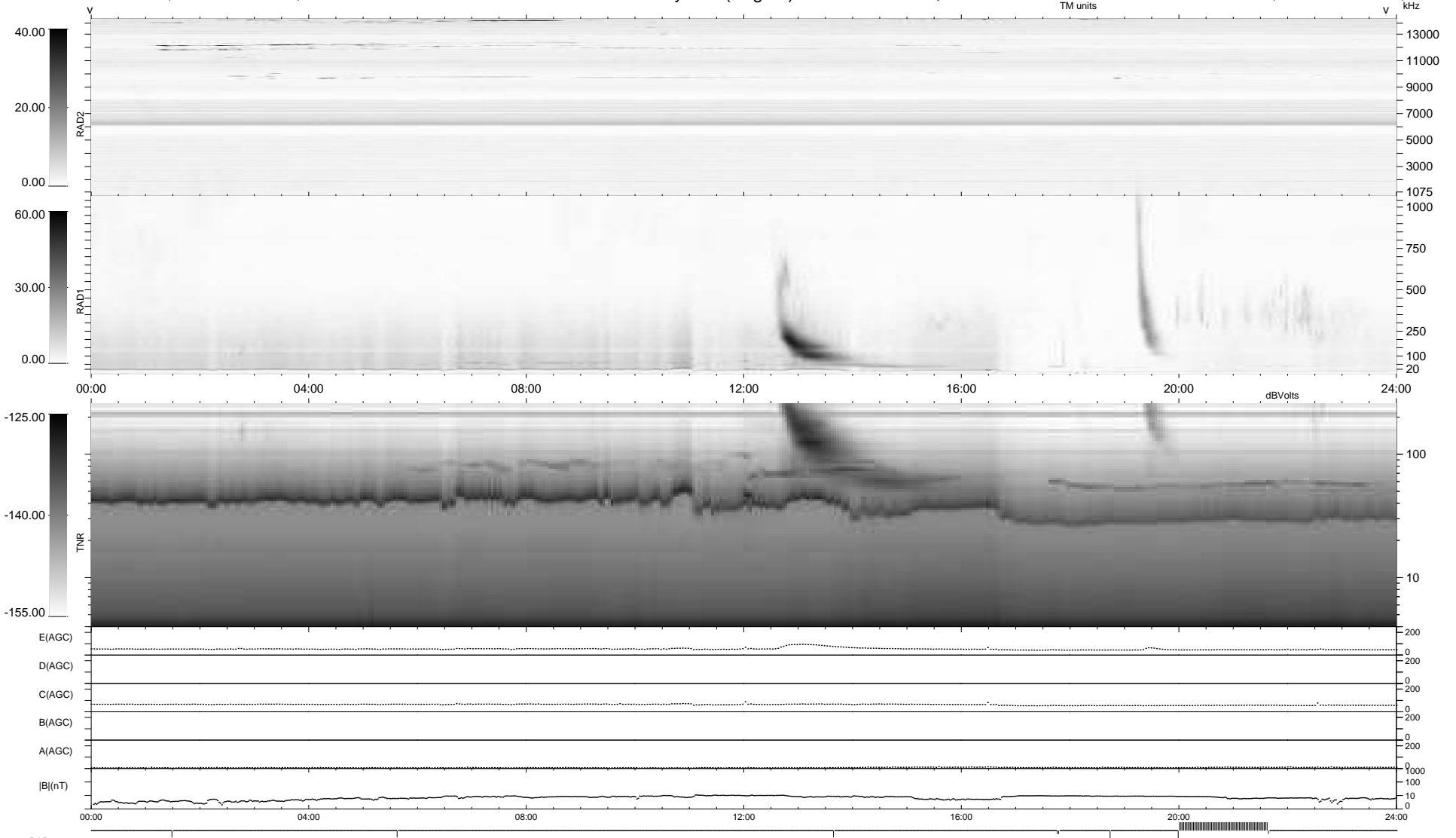
8 bad + 868 good MF/940MF projected (92%) - 64 missing MFs  
 Avg interval = 180 secs  
 Re = 200.44 (196.22, -40.31, -6.96 GSE)

windlib 2.0b

LZ version =

### WIND/WAVES Summary Plot (Page 1) for 06-DEC-2016, DOY = 341

DAILY 2017-03-21 16:44:17  
 Re = 199.41 (195.85, -36.81, -7.37 GSE)



RAD2  
 Antenna Ey .....  
 Mode LIN(1) .....  
 SUM/SEP SEP .....  
 Toggle OFF .....  
 RAD1  
 Antenna Ex .....  
 Mode LIS(2,4) .....  
 SUM/SEP SUM .....  
 Toggle OFF .....  
 TNR  
 Antenna ExEy .....  
 Mode A-32 .....  
 Sweep ACE .....