

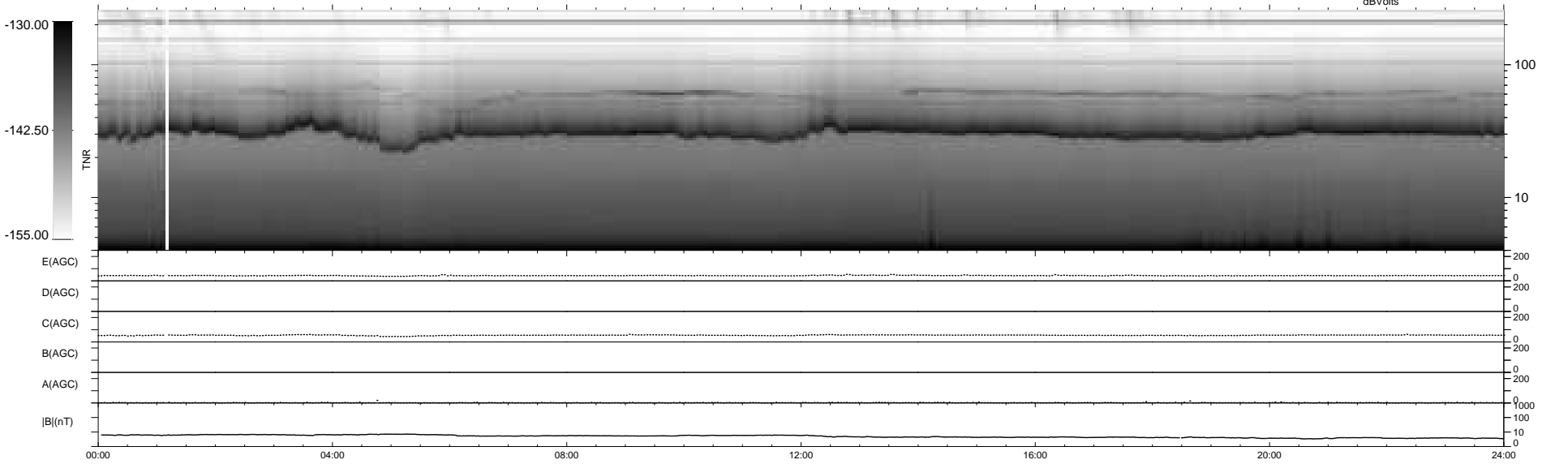
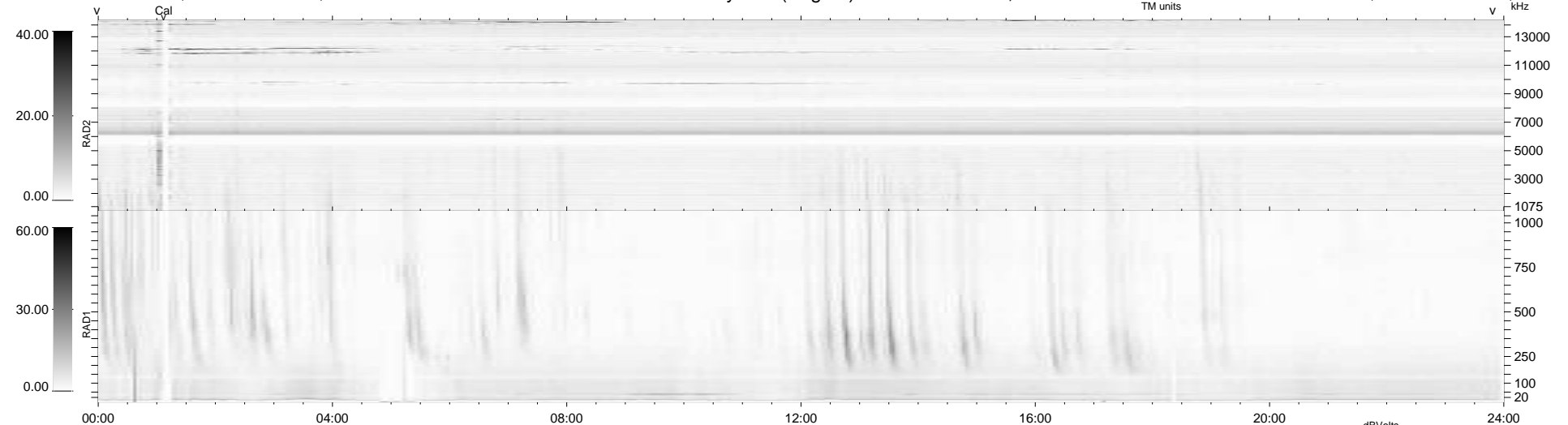
9 bad + 930 good MF/939MF projected (99%) - 0 missing MFs
 Avg interval = 180 secs
 Re = 206.38 (198.23, -57.23, -4.77 GSE)

windlib 2.0b

LZ version =

WIND/WAVES Summary Plot (Page 1) for 01-DEC-2016, DOY = 336

DAILY 2017-03-21 16:41:56
 Re = 205.12 (197.82, -53.99, -5.22 GSE)



```

RAD2
Antenna Ey .....
Mode LIN(1) .....
SUM/SEP SEP .....
Toggle OFF .....

RAD1
Antenna Ex .....
Mode LIS(2,4) .....
SUM/SEP SUM .....
Toggle OFF .....

TNR
Antenna ExEy .....
Mode A-32 .....
Sweep ACE .....
  
```